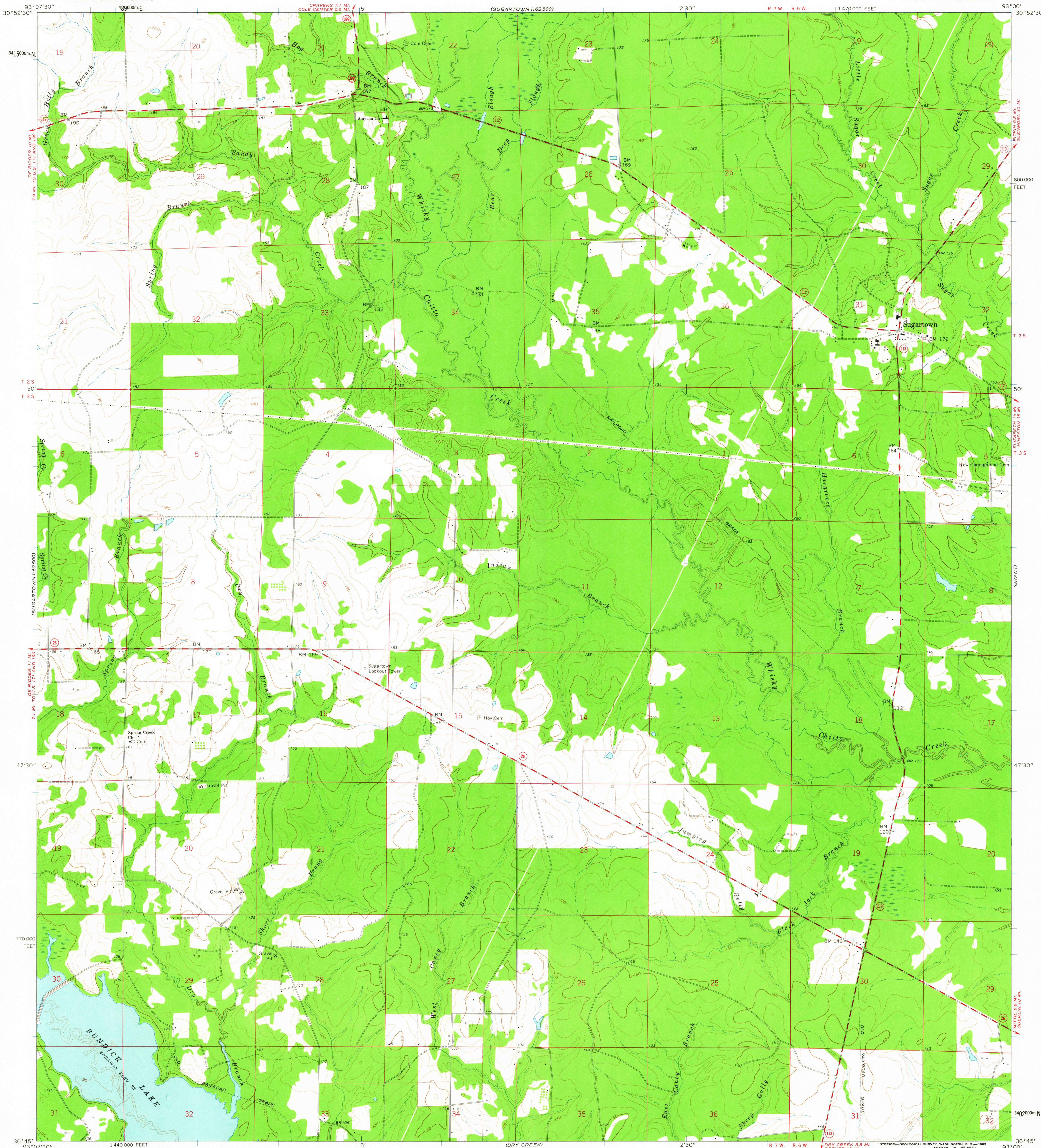


(SUGARTOWN)
1:62,500

UNITED STATES
DEPARTMENT OF THE INTERIOR
GEOLOGICAL SURVEY

SUGARTOWN QUADRANGLE
LOUISIANA—BEAUREGARD PARISH
7.5 MINUTE SERIES (TOPOGRAPHIC)
SE 1/4 SUGARTOWN 15' QUADRANGLE

(PITKIN)



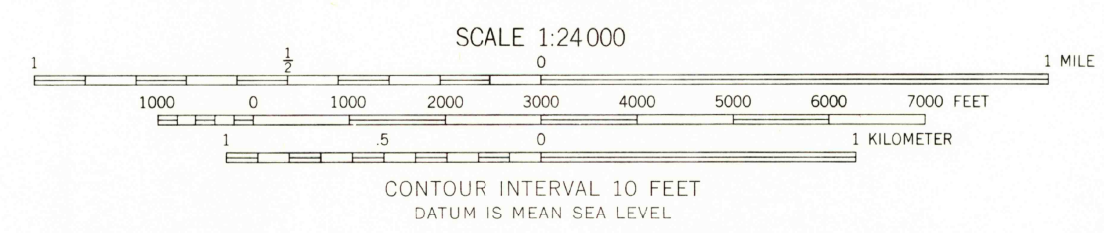
Mapped, edited, and published by the Geological Survey
in cooperation with State of Louisiana, Department
of Public Works

Control by USGS, USC&GS, and Louisiana Geodetic Survey
Planimetry by photogrammetric methods from aerial photographs taken
1951. Topography by planimetric surveys 1945-47 and 1950-1951
Revised 1961

Polyconic projection. 1927 North American datum
10,000-foot grid based on Louisiana coordinate system, south zone
1000-meter Universal Transverse Mercator grid ticks,
zone 15, shown in blue

Fine red dashed lines indicate selected fence and field lines where
generally visible on aerial photographs. This information is unchecked

TRUE NORTH
MAGNETIC NORTH
APPROXIMATE MEAN
DECLINATION, 1961



THIS MAP COMPLIES WITH NATIONAL MAP ACCURACY STANDARDS
FOR SALE BY U. S. GEOLOGICAL SURVEY, DENVER 25, COLORADO OR WASHINGTON 25, D. C.
AND BY THE STATE OF LOUISIANA, DEPARTMENT OF PUBLIC WORKS, BATON ROUGE 4, LOUISIANA
A FOLDER DESCRIBING TOPOGRAPHIC MAPS AND SYMBOLS IS AVAILABLE ON REQUEST



USGS
Historical File
Topographic Division

ROAD CLASSIFICATION
Medium-duty ——— Light-duty ———
Unimproved dirt =-----
State Route ○

SUGARTOWN, LA.
SE 1/4 SUGARTOWN 15' QUADRANGLE
N3045—W9300/7.5

1961

MAY 2 1963