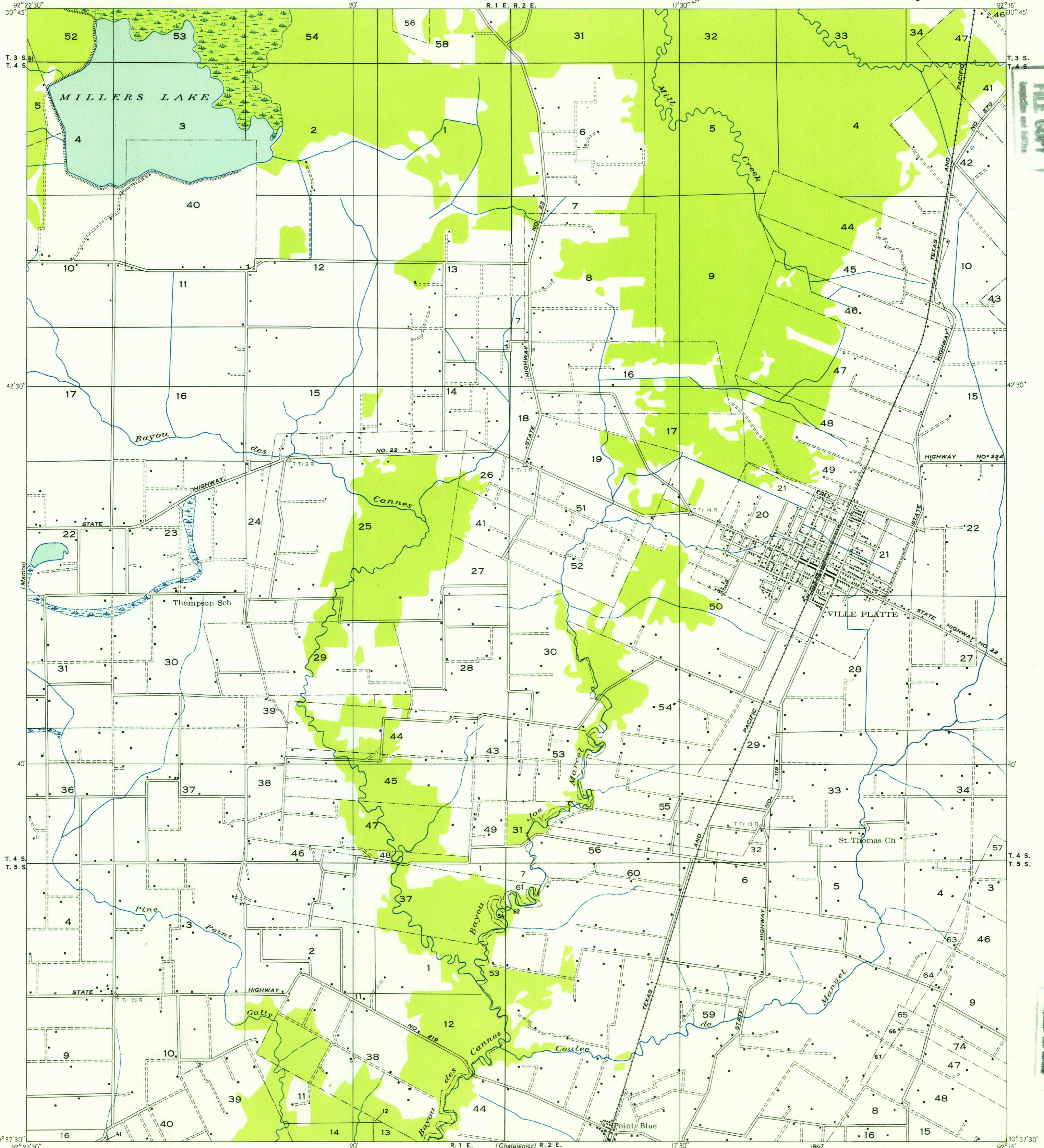


Advance sheet.
Subject to correction.

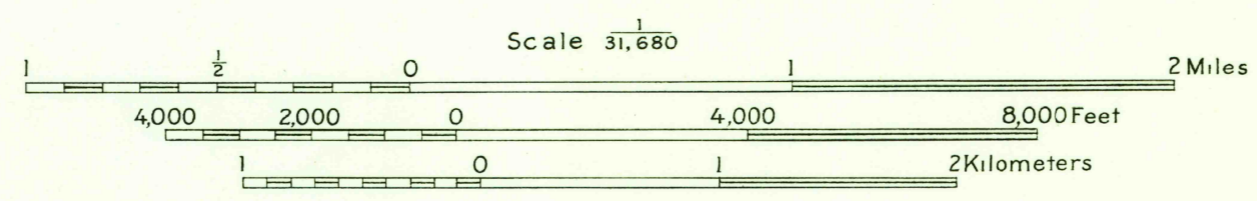


FILE COPY

FILE COPY

Glenn S. Smith, Division Engineer
Compiled by Geological Survey from aerial photographs
Field examination in 1935

73°
MAGNETIC NORTH
APPROXIMATE MEAN
DECLINATION, 1955



USGS
Historical File
Topographic Division

Polyconic projection. 1927 North American datum
Land lines added from General Land Office
records adjusted to natural features and control

VILLE PLATTE, LA.
N 3037.5-W9215/7.5

MAR 23 1954
1640