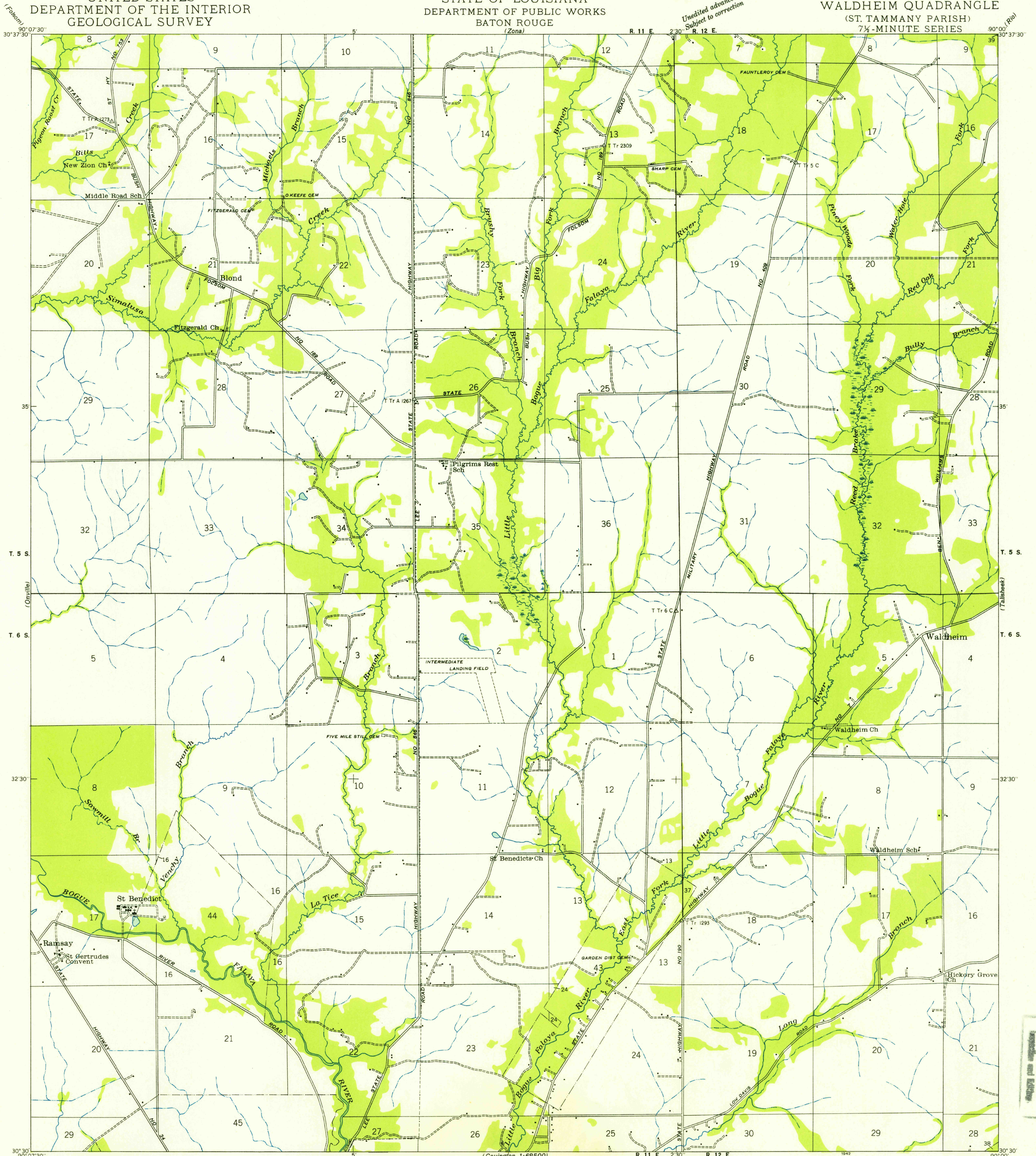


FILE COPY
Inspection and Editing

UNITED STATES
DEPARTMENT OF THE INTERIOR
GEOLOGICAL SURVEY

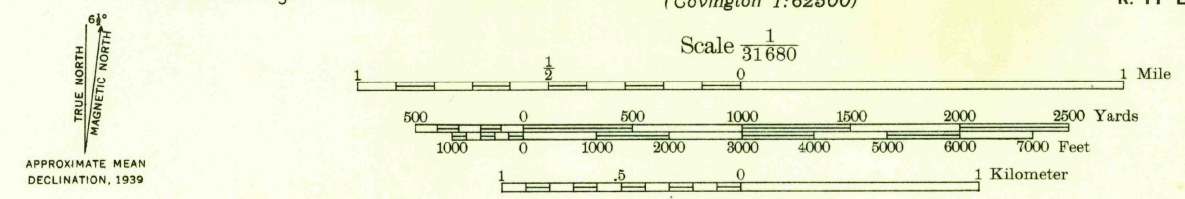
STATE OF LOUISIANA
DEPARTMENT OF PUBLIC WORKS
BATON ROUGE
(Zona)

WALDHEIM QUADRANGLE
(ST. TAMMANY PARISH)
7 1/2-MINUTE SERIES



Unedited advance sheet
Subject to correction

Compiled by Geological Survey from aerial photographs
Field examination in 1939



USGS
Historical File
Topographic Division

Polyconic projection. 1927 North American datum
Land lines added from General Land Office
records adjusted to natural features and control

WALDHEIM, LA.
3030-W9000/7.5

FILE COPY
Inspection and Editing

MAR 28 1954

1050