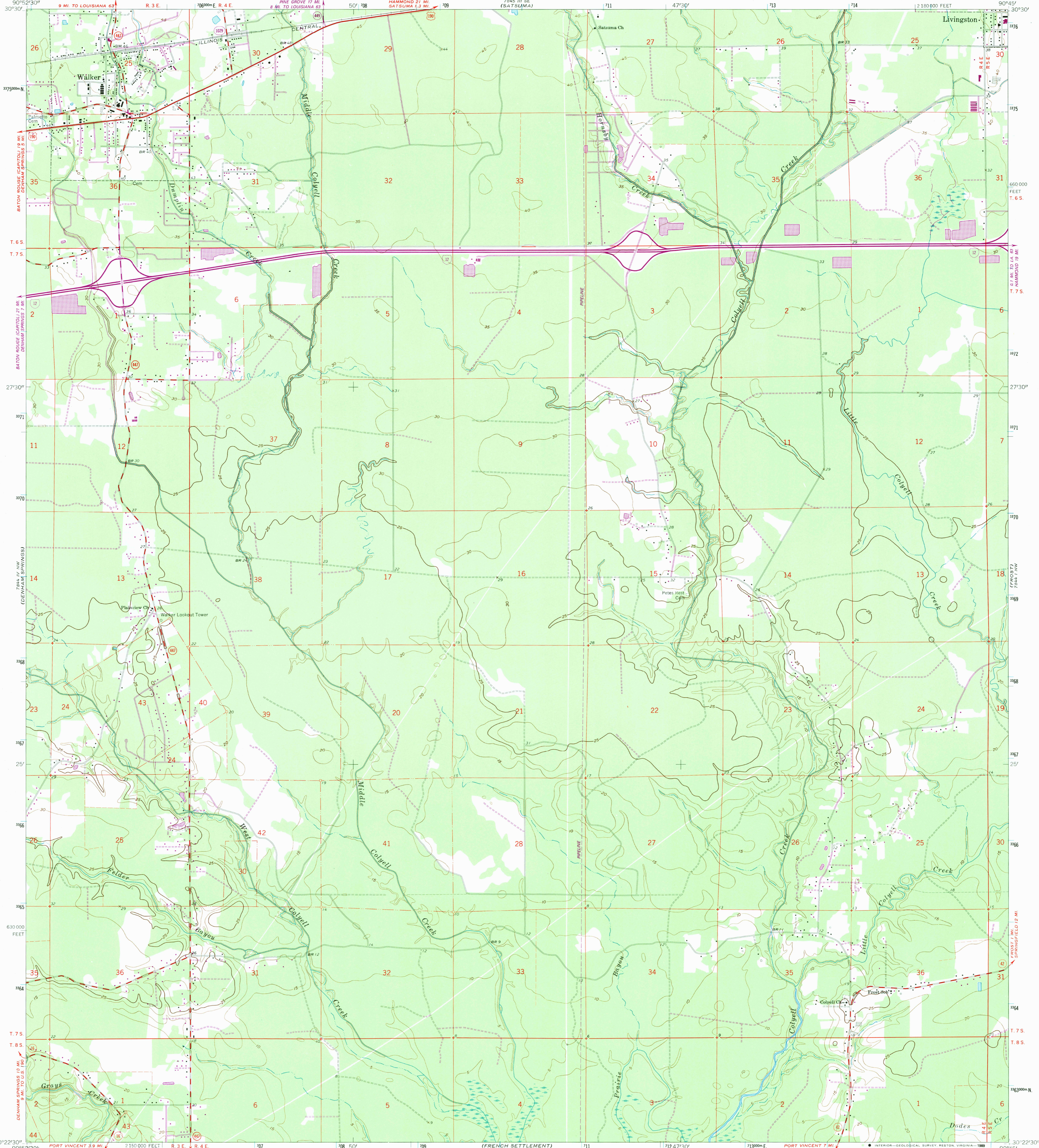


7844 IV NW
(DENHAM SPRINGS)

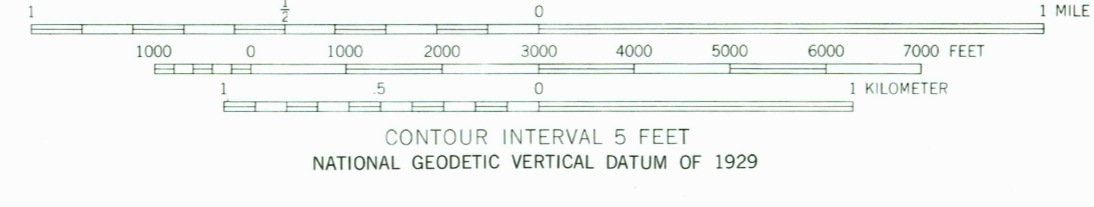
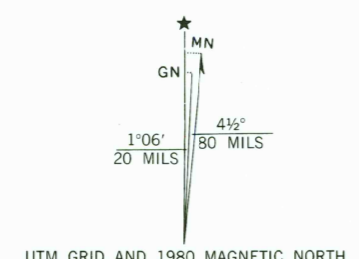
UNITED STATES
DEPARTMENT OF THE INTERIOR
GEOLOGICAL SURVEY

WALKER QUADRANGLE
LOUISIANA—LIVINGSTON PARISH
7.5 MINUTE SERIES (TOPOGRAPHIC)
NE/4 DENHAM SPRINGS 15' QUADRANGLE

7844 IV SW
(HAMMOND)



Mapped, edited, and published by the Geological Survey
Control by USGS and USC&GS
Planimetry by photogrammetric methods from aerial photographs taken 1952. Topography by planimetric surveys 1952-53. Revised 1962
Polyconic projection. 1927 North American datum
10,000-foot grid based on Louisiana coordinate system, south zone
1000-meter Universal Transverse Mercator grid ticks, zone 15, shown in blue
Fine red dashed lines indicate selected fence and field lines where generally visible on aerial photographs. This information is unchecked
To place on the predicted North American Datum 1983
move the projection lines 18 meters south and
10 meters east as shown by dashed corner ticks
Revisions shown in purple and woodland compiled
from aerial photographs taken 1978. Map edited
1980. This information not field checked



THIS MAP COMPLIES WITH NATIONAL MAP ACCURACY STANDARDS
FOR SALE BY U. S. GEOLOGICAL SURVEY, DENVER, COLORADO 80225, OR RESTON, VIRGINIA 22092
AND STATE OF LOUISIANA, DEPARTMENT OF PUBLIC WORKS, BATON ROUGE, LOUISIANA 70804
A FOLDER DESCRIBING TOPOGRAPHIC MAPS AND SYMBOLS IS AVAILABLE ON REQUEST

ROAD CLASSIFICATION

Primary highway, hard surface	Light-duty road, hard or improved surface
Secondary highway, hard surface	Unimproved road
Interstate Route	U. S. Route
	State Route

USGS NMD HISTORICAL MAP
MAY 05 1989
REC'D FILE COPY

WALKER, LA.
NE/4 DENHAM SPRINGS 15' QUADRANGLE
30090-D7-TF-024
1962
PHOTOREVISED 1980
DMA 7844 IV NE—SERIES 7885

7844 IV SE
(SPRINGFIELD)

7844 IV SW
(HAMMOND)

7844 IV NW
(DENHAM SPRINGS)

7844 IV SW
(HAMMOND)

7844 IV SW
(HAMMOND)