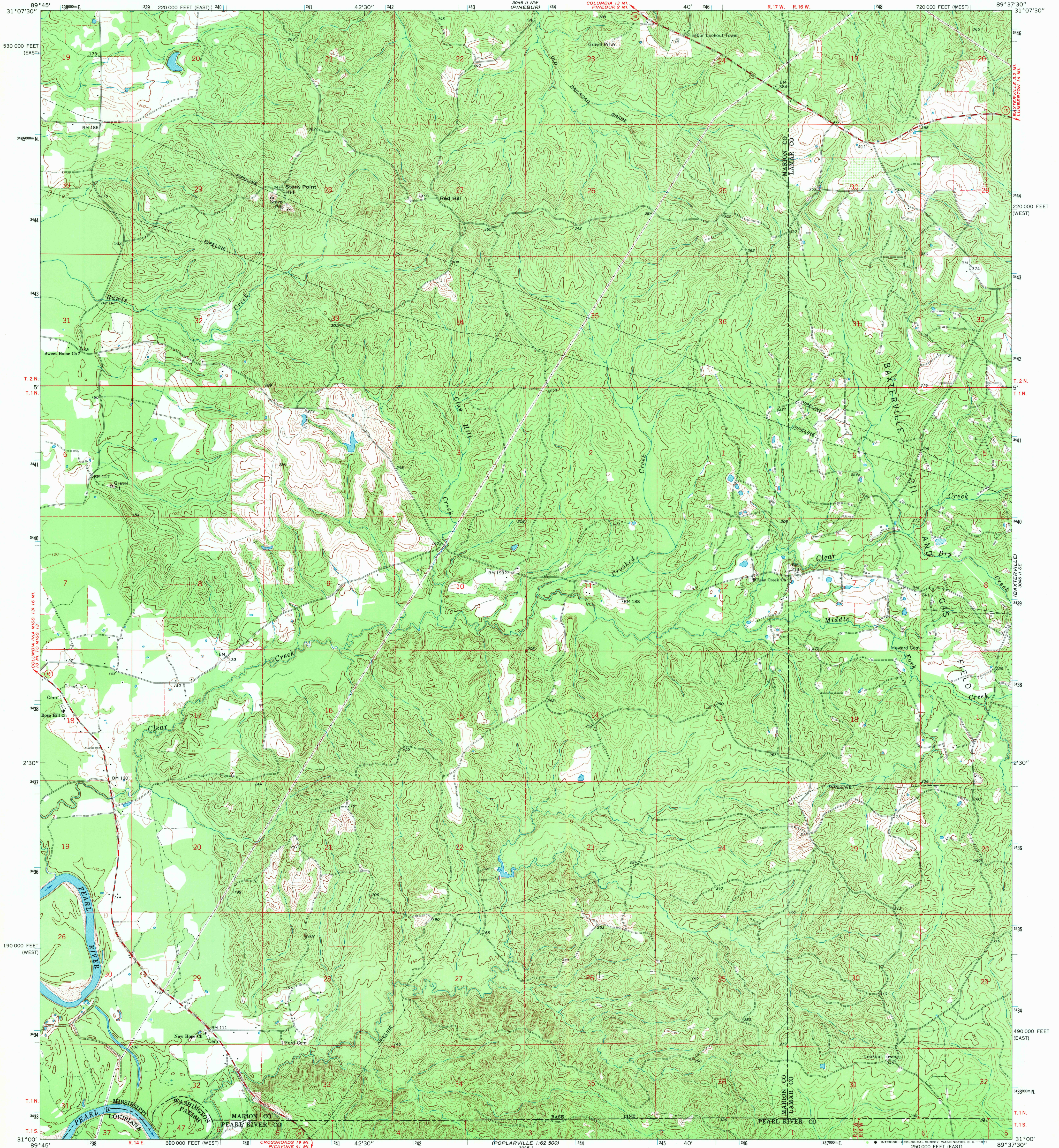
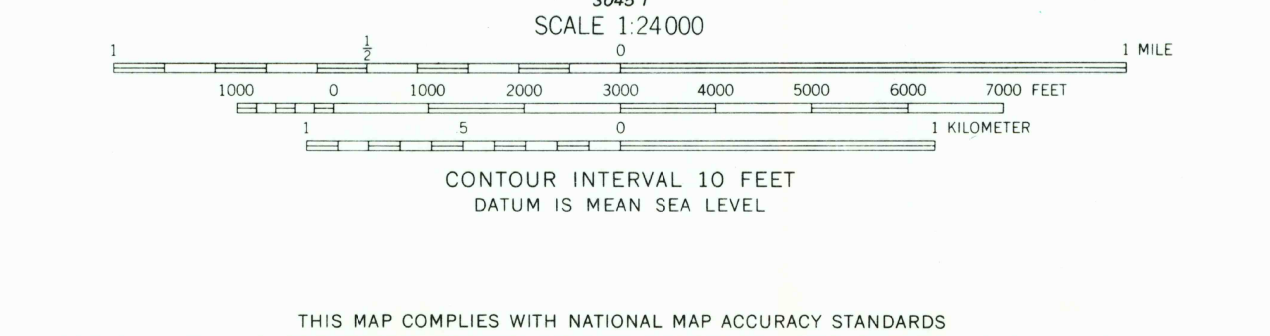
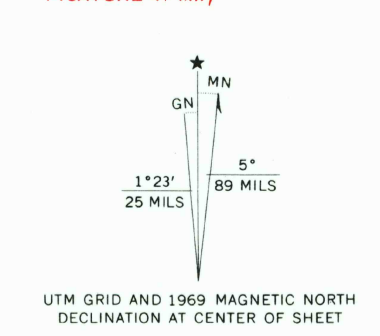


306 1/2 NE  
BAXTERVILLE NE



Mapped, edited, and published by the Geological Survey  
Control by USGS and USC&GS  
Topography by photogrammetric methods from aerial  
photographs taken 1967. Field checked 1969  
Polyconic projection. 1927 North American datum  
10,000-foot grids based on Mississippi coordinate system, west and east zones  
1000-meter Universal Transverse Mercator grid ticks,  
zone 16, shown in blue  
Fine red dashed lines indicate selected fence and field lines where  
generally visible on aerial photographs. This information is unchecked



USGS  
Historical File  
Topographic Division

ROAD CLASSIFICATION  
Secondary highway, all weather, Light-duty road, all weather,  
hard surface  
Unimproved road, fair or dry  
weather

State Route

MISS. QUADRANGLE LOCATION

U.S.G.S. BAXTERVILLE SW, MISS.-LA.  
N3100-W8937.5/7.5  
1969  
AMS 3046 II SW-SERIES V843

THIS MAP COMPLIES WITH NATIONAL MAP ACCURACY STANDARDS  
FOR SALE BY U.S. GEOLOGICAL SURVEY, DENVER, COLORADO 80225, OR WASHINGTON, D.C. 20242  
AND BY THE STATE OF LOUISIANA, DEPARTMENT OF PUBLIC WORKS, BATON ROUGE, LOUISIANA 70804  
A FOLDER DESCRIBING TOPOGRAPHIC MAPS AND SYMBOLS IS AVAILABLE ON REQUEST

306 1/2 NE  
BAXTERVILLE NE

1806AL USA 1:25000  
8064 10

FILE COPY  
TOPOGRAPHIC DIVISION

2205  
JUN 23 1971