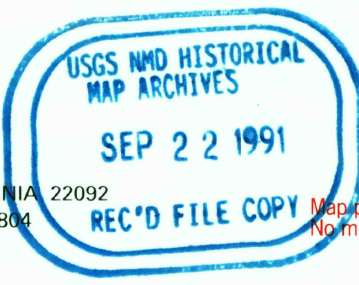


Mapped by U. S. Coast and Geodetic Survey
Edited and published by the Geological Survey
Control by USC&GS and Louisiana Geodetic Survey
Culture and drainage in part compiled from aerial photographs
taken 1951 and 1955. Topography by planetable surveys 1952
Field check 1956
Hydrography compiled from USC&GS charts 877 and 878
Polyconic projection. 1927 North American datum
10,000-foot grids based on Mississippi coordinate system, east zone
and Louisiana coordinate system, south zone
1000-meter Universal Transverse Mercator grid ticks
zone 16, shown in blue
Dashed land lines indicate approximate locations.
Revisions shown in purple compiled by the Geological Survey from
aerial photographs taken 1970. This information not field checked

To place on the predicted North American Datum 1983
move the projection lines 18 meters south and
3 meters east as shown by dashed corner ticks

SCALE 1:24,000
CONTOUR INTERVAL 5 FEET
NATIONAL GEODETIC VERTICAL DATUM OF 1929
DEPTH CURVES AND SOUNDINGS IN FEET—DATUM IS MEAN LOW WATER
SHORELINE SHOWN REPRESENTS THE APPROXIMATE LINE OF MEAN HIGH WATER
THE MEAN RANGE OF TIDE IS APPROXIMATELY 1 FOOT



ROAD CLASSIFICATION
Medium-duty ——— Light-duty ———
Unimproved dirt - - - - -

GRAND ISLAND PASS, MISS.-LA.
30089-B4-TF-024
PHOTOINSPECTED 1976
1956
PHOTOREVISED 1970
DMA 3144 III NW—SERIES V843