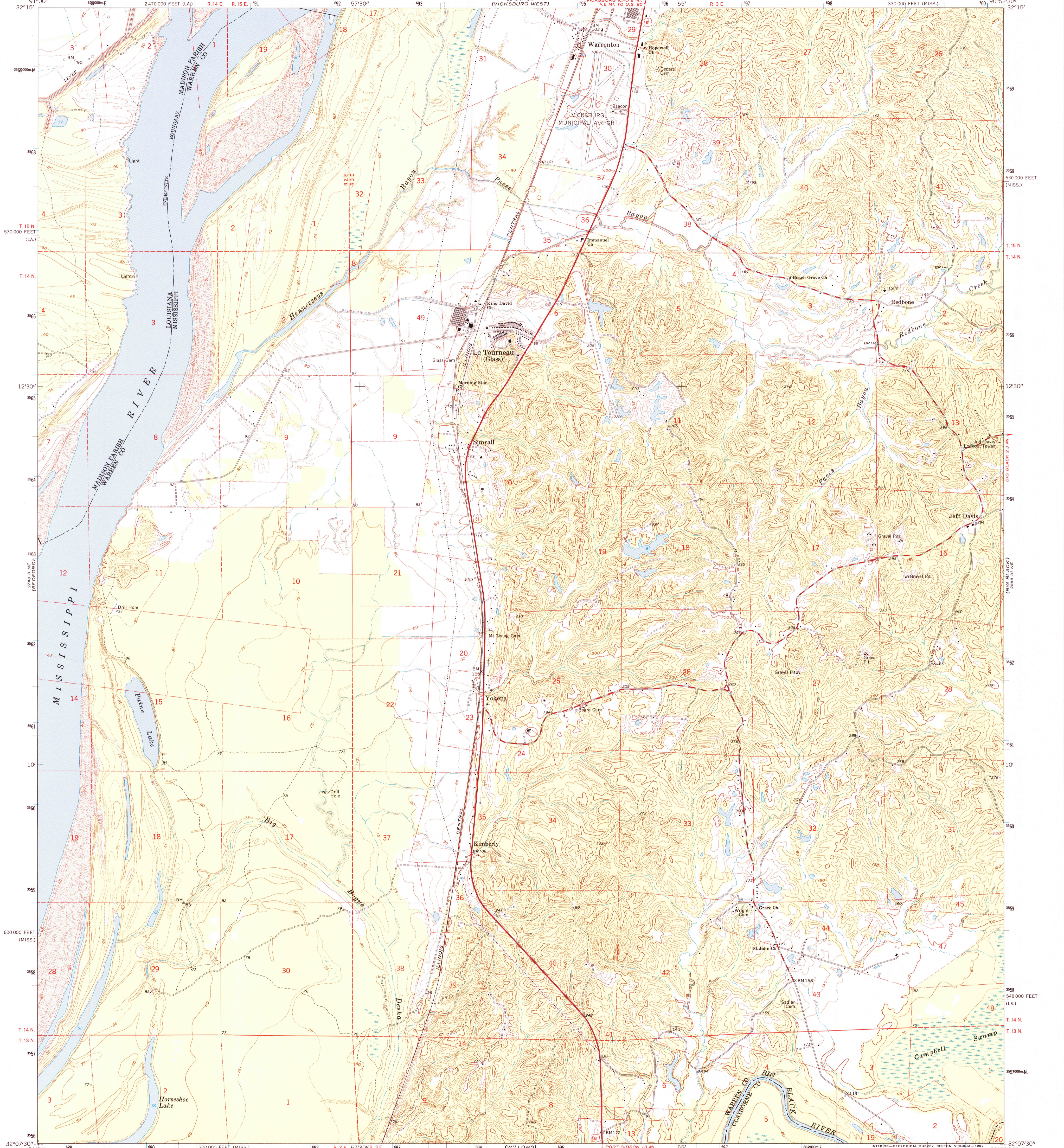


728 155
(ROUND)

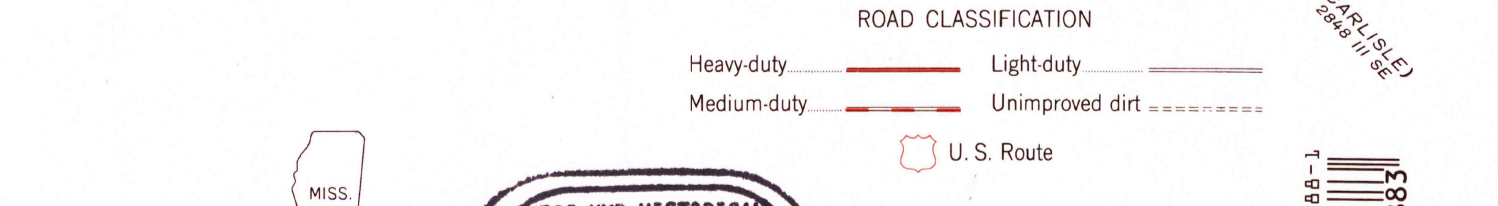
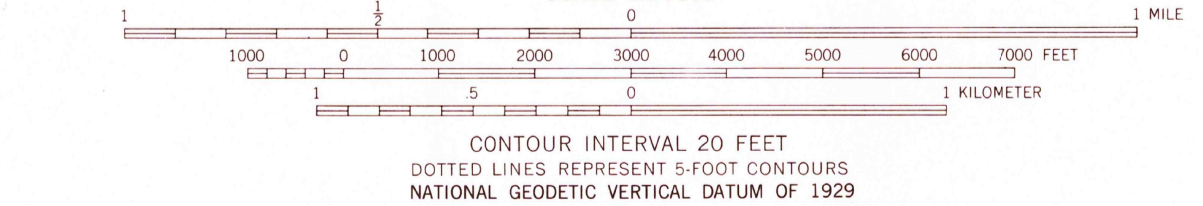
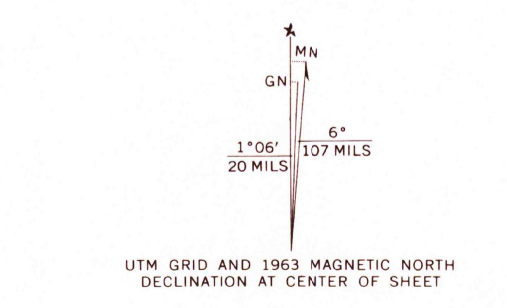
UNITED STATES
DEPARTMENT OF THE INTERIOR
GEOLOGICAL SURVEY

YOKENA QUADRANGLE
MISSISSIPPI-LOUISIANA
7.5 MINUTE SERIES (TOPOGRAPHIC)
NW/4 YOKENA 15' QUADRANGLE

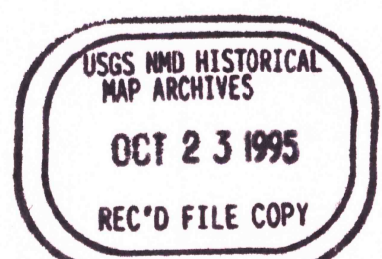
288 155
(VICKSBURG EAST)



Mapped, edited, and published by the Geological Survey
Control by USGS, USC&GS, and USCE
Topography by photogrammetric methods from aerial photographs taken 1960 and planetable surveys 1963
Polyconic projection. 1927 North American datum 10,000-foot grids based on Mississippi coordinate system, west zone and Louisiana coordinate system, north zone 1000-meter Universal Transverse Mercator grid ticks, zone 15, shown in blue
To place on the predicted North American Datum 1983 move the projection lines 13 meters south and 10 meters east as shown by dashed corner ticks
Fine red dashed lines indicate selected fence and field lines where generally visible on aerial photographs. This information is unchecked
Map photoinspected 1973
No major culture or drainage changes observed



THIS MAP COMPLIES WITH NATIONAL MAP ACCURACY STANDARDS
FOR SALE BY U. S. GEOLOGICAL SURVEY, DENVER, COLORADO 80225, OR RESTON, VIRGINIA 22092
AND STATE OF LOUISIANA, DEPARTMENT OF PUBLIC WORKS, BATON ROUGE, LOUISIANA 70804
A FOLDER DESCRIBING TOPOGRAPHIC MAPS AND SYMBOLS IS AVAILABLE ON REQUEST



YOKENA, MISS.-LA.
NW/4 YOKENA 15' QUADRANGLE
N3207.5-W9052.5/7.5
1963
PHOTOINSPECTED 1973
AMS 2848 III NW-SERIES V843

