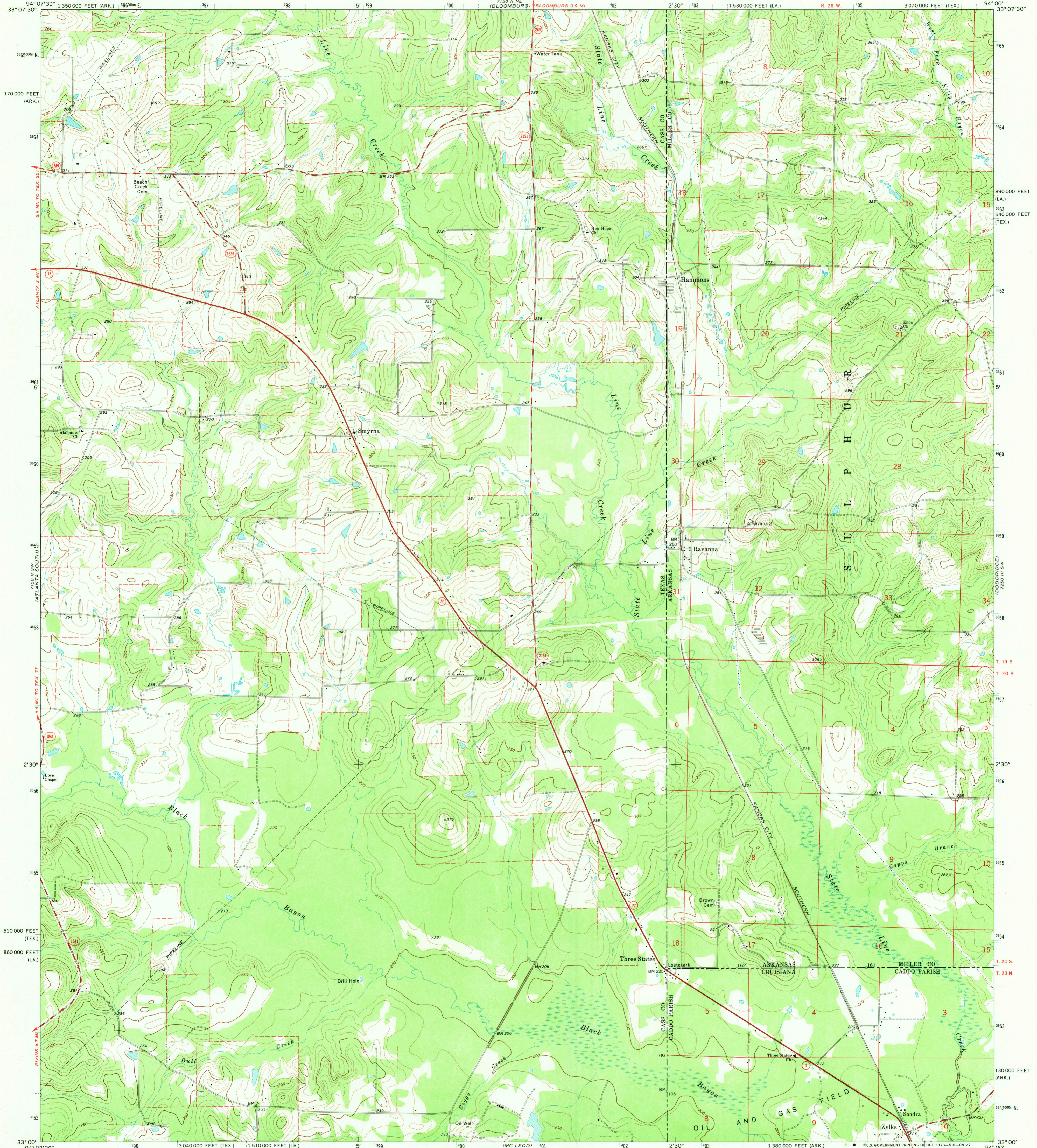
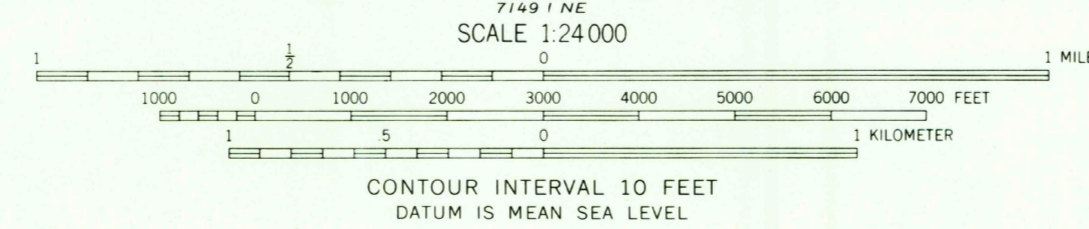
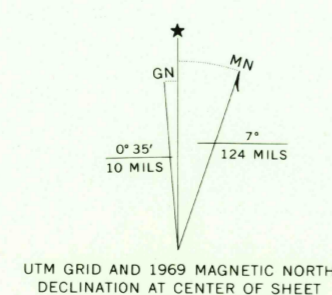


UNITED STATES
DEPARTMENT OF THE INTERIOR
GEOLOGICAL SURVEY

RAVANNA QUADRANGLE
TEXAS-ARKANSAS-LOUISIANA
7.5 MINUTE SERIES (TOPOGRAPHIC)
SE/4 ATLANTA 15' QUADRANGLE



Mapped, edited, and published by the Geological Survey
Control by USGS, USC&GS, and Louisiana Geodetic Survey
Topography by photogrammetric methods from aerial
photographs taken 1968. Field checked 1969
Polyconic projection. 1927 North American datum
10,000-foot grids based on Texas coordinate system, north central zone,
Arkansas coordinate system, south zone, and Louisiana coordinate
system, north zone
1000-meter Universal Transverse Mercator grid ticks,
zone 15, shown in blue
Fine red dashed lines indicate selected fence lines



Primary highway, all weather, hard surface
Secondary highway, all weather, hard surface
Light duty road, all weather, improved surface
Unimproved road, fair or dry weather
State Route

13 AUG 1973
RAVANNA, TEX.-ARK.-LA.
SE/4 ATLANTA 15' QUADRANGLE
N3300-W9400/7.5
1969
AMS 1150 II SE-SERIES V882

THIS MAP COMPLIES WITH NATIONAL MAP ACCURACY STANDARDS
FOR SALE BY U.S. GEOLOGICAL SURVEY, DENVER, COLORADO 80225, OR WASHINGTON, D.C. 20242
AND BY THE ARKANSAS GEOLOGICAL COMMISSION, LITTLE ROCK, ARKANSAS 72201
A FOLDER DESCRIBING TOPOGRAPHIC MAPS AND SYMBOLS IS AVAILABLE ON REQUEST

Handwritten notes:
Horn
3000
50 ft