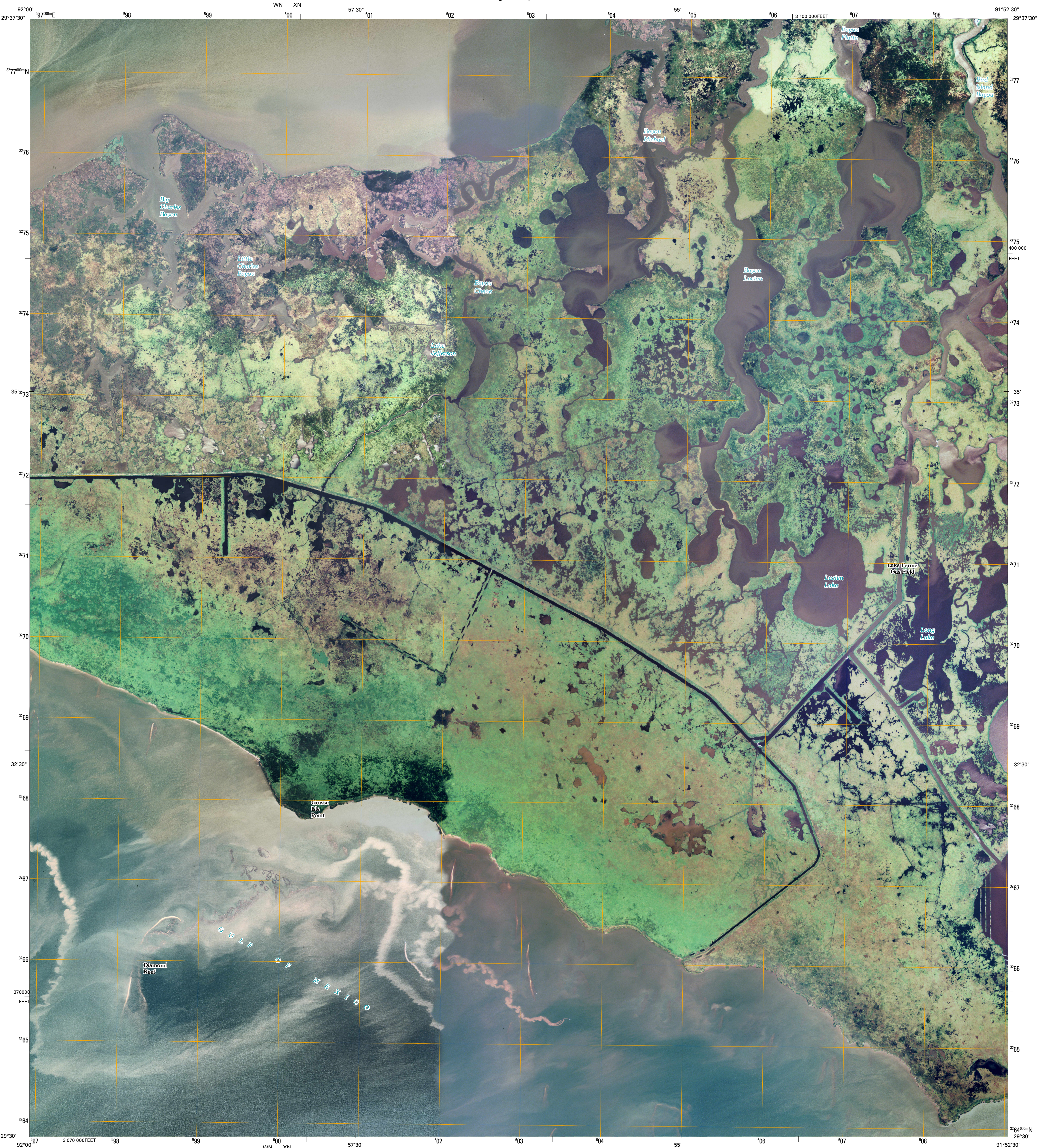




U.S. DEPARTMENT OF THE INTERIOR
U. S. GEOLOGICAL SURVEY



BAYOU LUCIEN QUADRANGLE
LOUISIANA
7.5-MINUTE SERIES

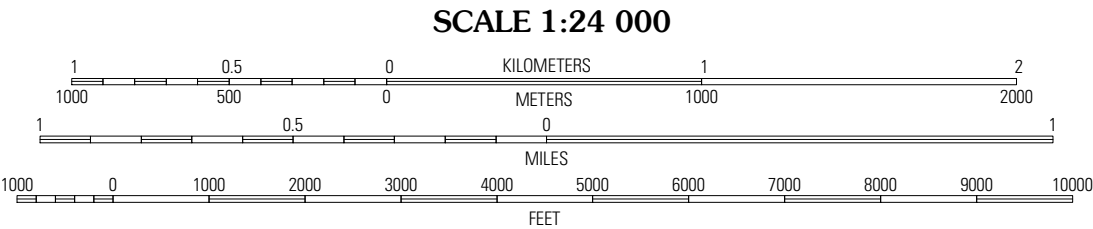


Produced by the United States Geological Survey
North American Datum of 1983 (NAD83)
World Geodetic System of 1984 (WGS84). Projection and
1 000-meter grid: Universal Transverse Mercator, Zone 15R
10 000-foot ticks: Louisiana Coordinate System of 1983
(south zone)

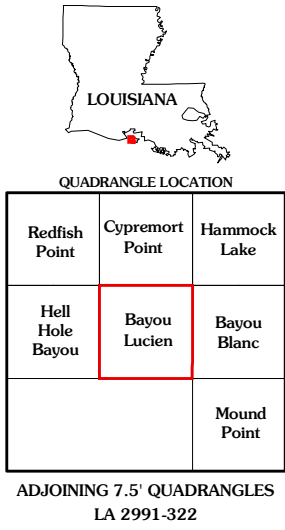
Imagery.....NAIP, September 2007
Roads.....National Transportation Dataset, 2004
Names.....GNIS, 2008

UTM GRID AND 2009 MAGNETIC NORTH
DECLINATION AT CENTER OF SHEET

U.S. National Grid
100,000-m Square ID
WN XN
Grid Zone Designation
15R



This map was produced to conform with version 0.0.25 of the
draft USGS Standards for 7.5-Minute Quadrangle Maps.
A metadata file associated with this product is also draft version 0.0.25



ROAD CLASSIFICATION

Interstate Route	State Route
US Route	Local Road
Ramp	4WD

Interstate Route US Route State Route

BAYOU LUCIEN, LA
2009