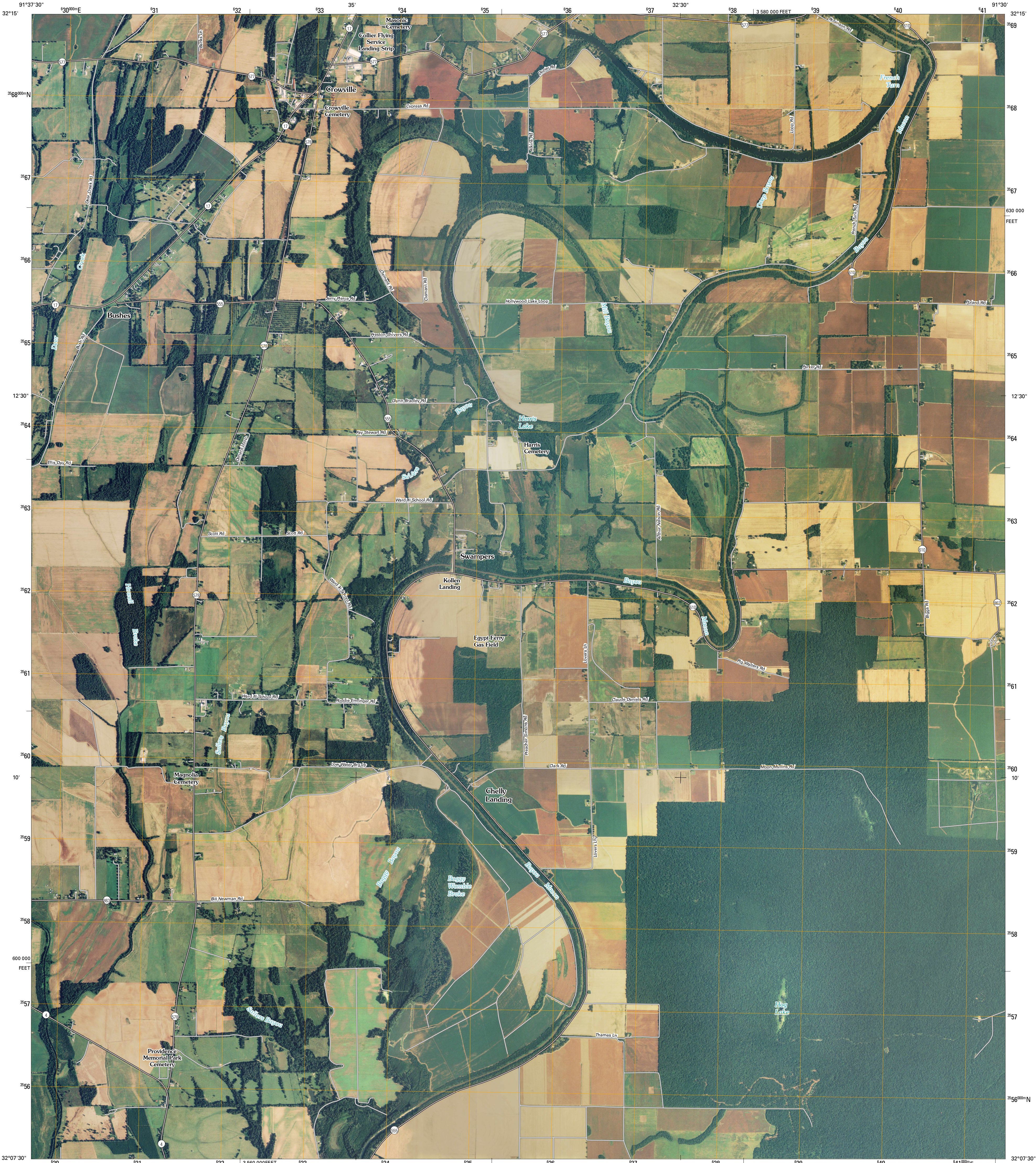




U.S. DEPARTMENT OF THE INTERIOR
U. S. GEOLOGICAL SURVEY

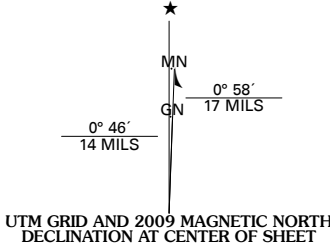


CROWVILLE QUADRANGLE
LOUISIANA
7.5-MINUTE SERIES

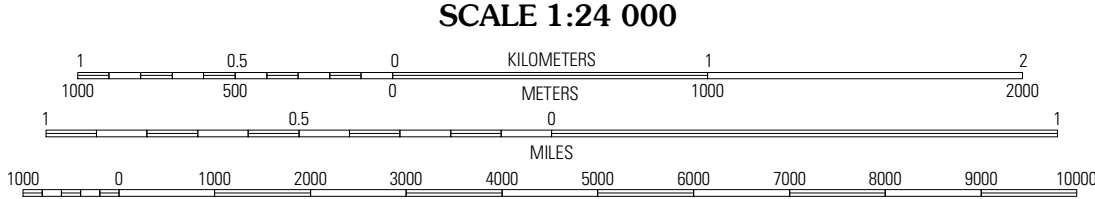


Produced by the United States Geological Survey
North American Datum of 1983 (NAD83)
World Geodetic System of 1984 (WGS84). Projection and
1 000-meter grid: Universal Transverse Mercator, Zone 15S
10 000-foot ticks: Louisiana Coordinate System of 1983
(north zone)

Imagery.....NAIP, August 2007
Roads.....National Transportation Dataset, 2004
Names.....GNIS, 2008



U.S. National Grid 100,000-m Square ID
XR
Grid Zone Designation 15S

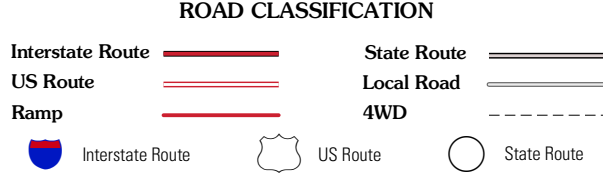


This map was produced to conform with version 0.0.25 of the
draft USGS Standards for 7.5-Minute Quadrangle Maps.
A metadata file associated with this product is also draft version 0.0.25



QUADRANGLE LOCATION			
Baskinton	Lamar	Indian Lake	
Winnsboro	Crowville	Tensas Bluff	
Gilbert	Como	Newlight	

ADJOINING 7.5' QUADRANGLES
LA 3291-214



CROWVILLE, LA
2009