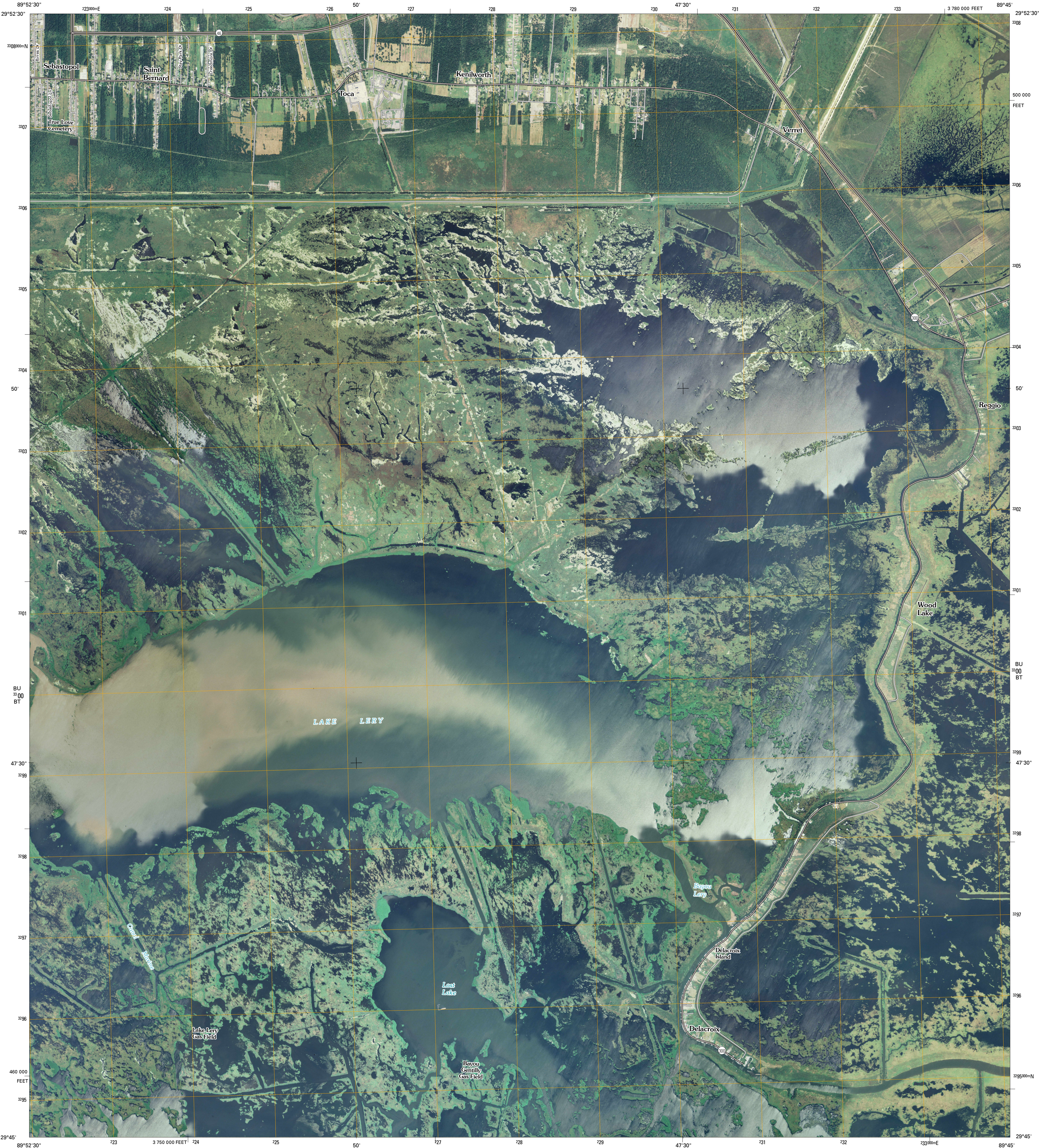




U.S. DEPARTMENT OF THE INTERIOR  
U. S. GEOLOGICAL SURVEY



DELACROIX QUADRANGLE  
LOUISIANA  
7.5-MINUTE SERIES

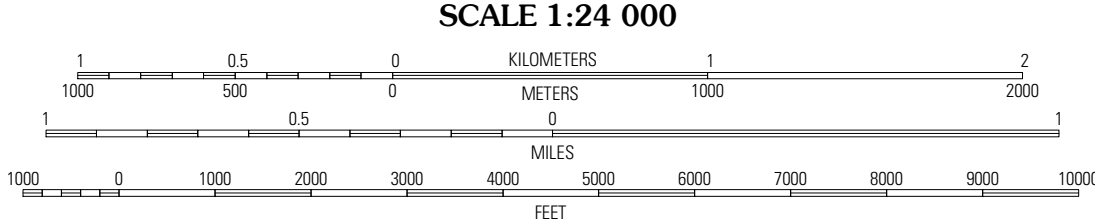


Produced by the United States Geological Survey  
North American Datum of 1983 (NAD83)  
World Geodetic System of 1984 (WGS84). Projection and  
1 000-meter grid: Universal Transverse Mercator, Zone 16R  
10 000-foot ticks: Louisiana Coordinate System of 1983  
(south zone)

Imagery.....NAIP, September 2007  
Roads.....National Transportation Dataset, 2004 - 2008  
Names.....GNIS, 2008

UTM GRID AND 2009 MAGNETIC NORTH  
DECLINATION AT CENTER OF SHEET

|                       |
|-----------------------|
| U.S. National Grid    |
| 100,000-m Square ID   |
| BU                    |
| BT                    |
| Grid Zone Designation |
| 16R                   |



This map was produced to conform with version 0.0.25 of the  
draft USGS Standards for 7.5-Minute Quadrangle Maps.  
A metadata file associated with this product is also draft version 0.0.25



| QUADRANGLE LOCATION |                   |                           |
|---------------------|-------------------|---------------------------|
| Chalmette           | Marrero<br>Castle | Proctor<br>Point          |
| Belle<br>Chasse     | Delacroix         | Vicksburg                 |
| Phoenix             | Lake<br>Battola   | Lake<br>Caucho<br>Caballo |

ADJOINING 7.5' QUADRANGLES  
LA 2989-331

ROAD CLASSIFICATION

|                  |             |
|------------------|-------------|
| Interstate Route | State Route |
| US Route         | Local Road  |
| Ramp             | 4WD         |

Interstate Route US Route State Route

DELACROIX, LA  
2009