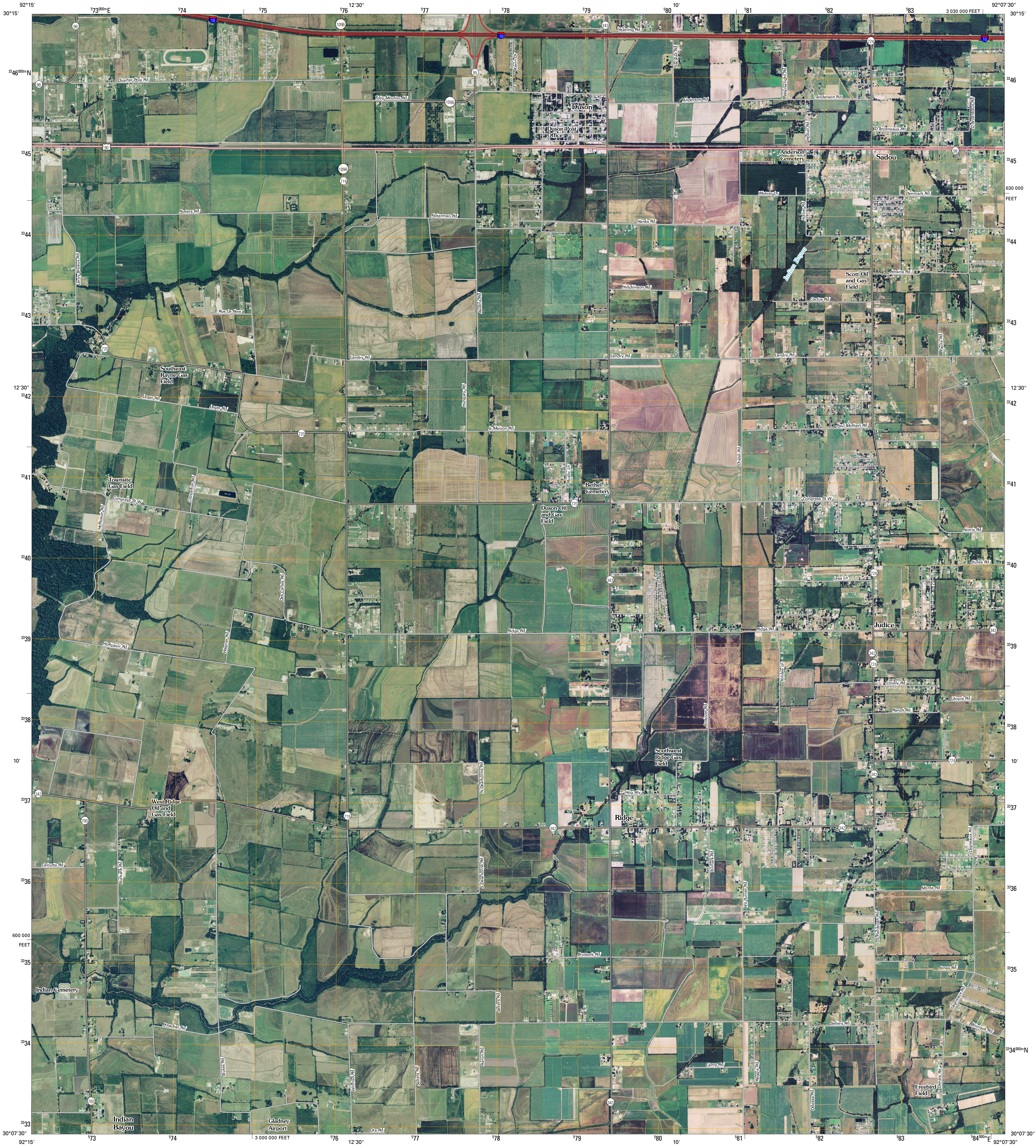




U.S. DEPARTMENT OF THE INTERIOR
U. S. GEOLOGICAL SURVEY

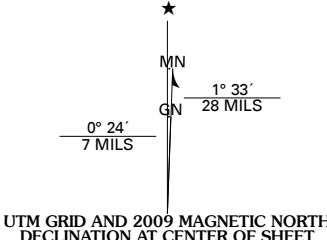


DUSON QUADRANGLE
LOUISIANA
7.5-MINUTE SERIES



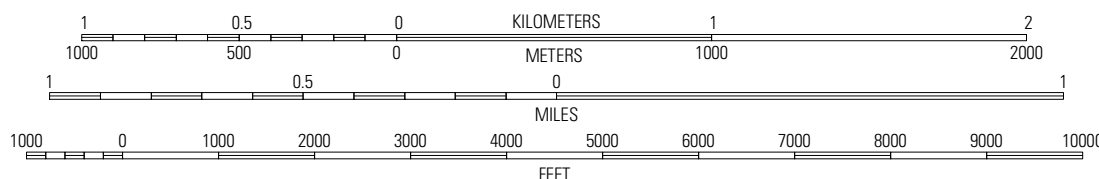
Produced by the United States Geological Survey
North American Datum of 1983 (NAD83)
World Geodetic System of 1984 (WGS84). Projection and
1 000-meter grid: Universal Transverse Mercator, Zone 15R
10 000-foot ticks: Louisiana Coordinate System of 1983
(south zone)

Imagery.....NAIP, September 2007
Roads.....National Transportation Dataset, 2004
Names.....GNIS, 2008



| U.S. National Grid |
|-----------------------|
| 100,000m Square ID |
| WP |
| Grid Zone Designation |
| 15R |

SCALE 1:24 000



This map was produced to conform with version 0.0.25 of the
draft USGS Standards for 7.5-Minute Quadrangle Maps.
A metadata file associated with this product is also draft version 0.0.25



| Branch | Mire | Carencro |
|--------------|-------|-----------|
| Crowley East | DUSON | Lafayette |
| Kaplan North | Laroy | Milton |

ADJOINING 7.5' QUADRANGLES
LA 3092-113

| ROAD CLASSIFICATION | | |
|---------------------|-------------|------------|
| Interstate Route | State Route | Local Road |
| US Route | 4WD | |
| Ramp | | |

DUSON, LA
2009