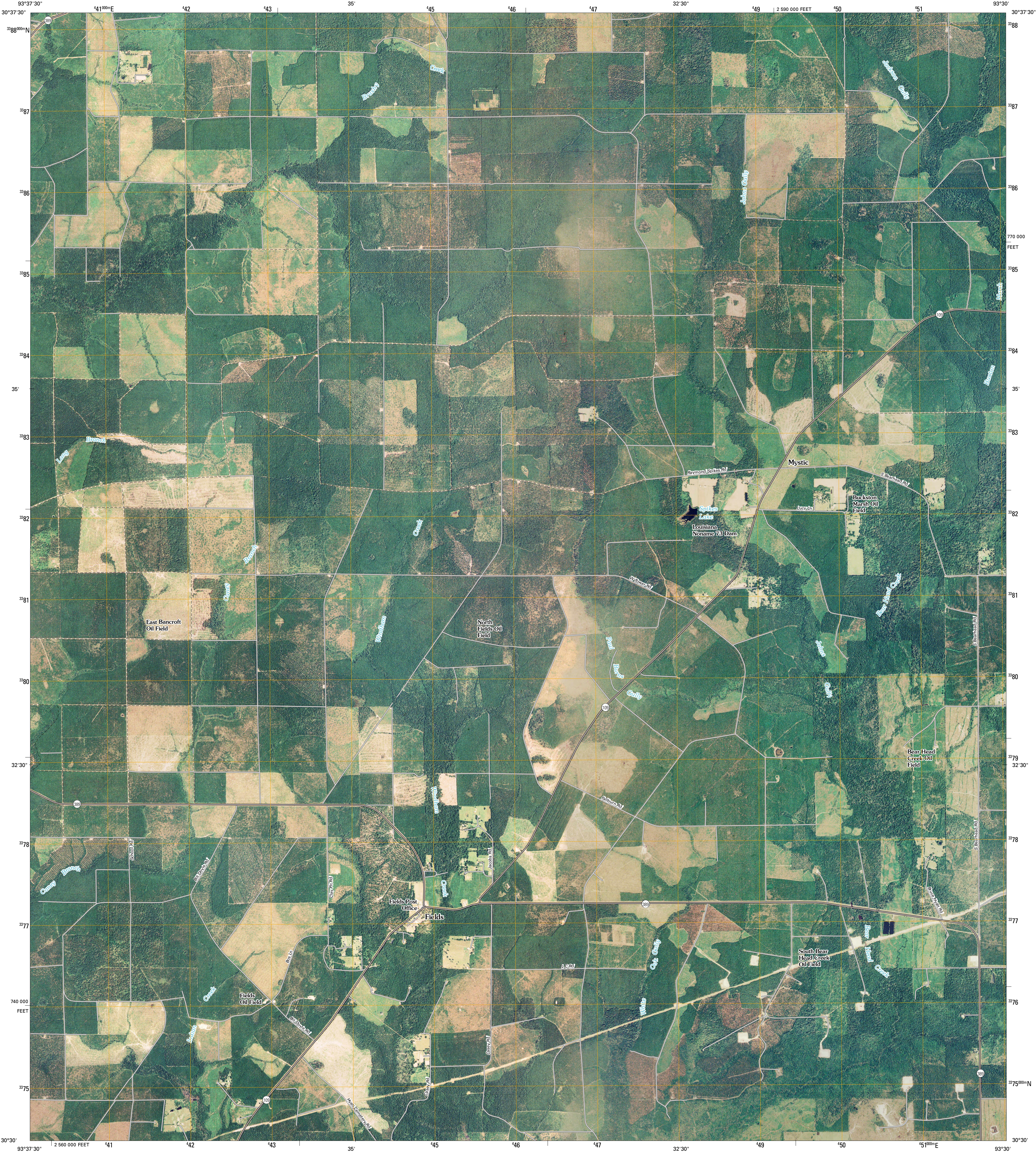




U.S. DEPARTMENT OF THE INTERIOR
U. S. GEOLOGICAL SURVEY

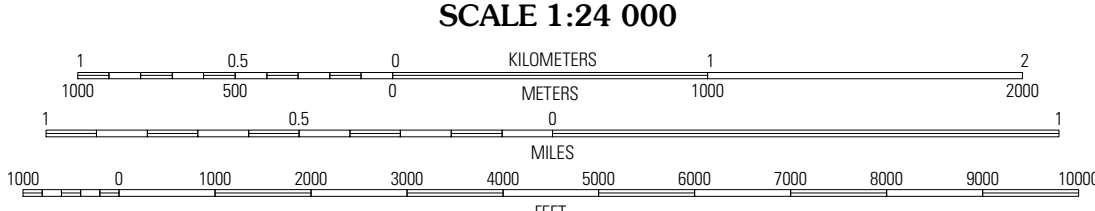
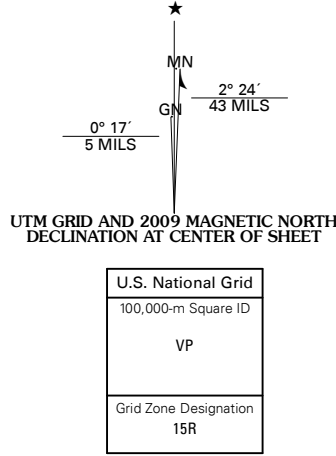


FIELDS QUADRANGLE
LOUISIANA
7.5-MINUTE SERIES

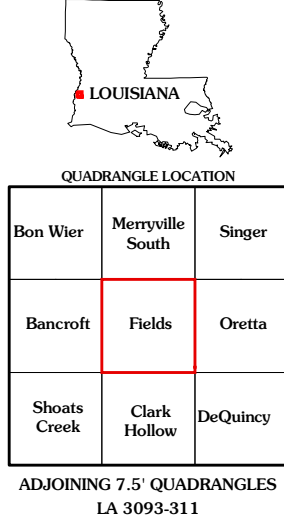


Produced by the United States Geological Survey
North American Datum of 1983 (NAD83). Projection and
World Geodetic System of 1984 (WGS84). 1 000-meter grid: Universal Transverse Mercator, Zone 15R
10 000-foot ticks: Louisiana Coordinate System of 1983
(south zone)

Imagery.....NAIP, August 2007
Roads.....National Transportation Dataset, 2006
Names.....GNIS, 2008

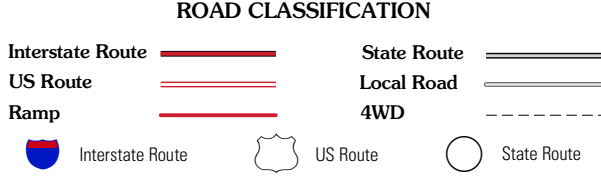


This map was produced to conform with version 0.0.25 of the
draft USGS Standards for 7.5-Minute Quadrangle Maps.
A metadata file associated with this product is also draft version 0.0.25



Bon Wier	Merriville South	Singer
Bancroft	Fields	Oretta
Shoats Creek	Clark Hollow	DeQuincy

ADJOINING 7.5 QUADRANGLES
LA 3093-311



FIELDS, LA
2009