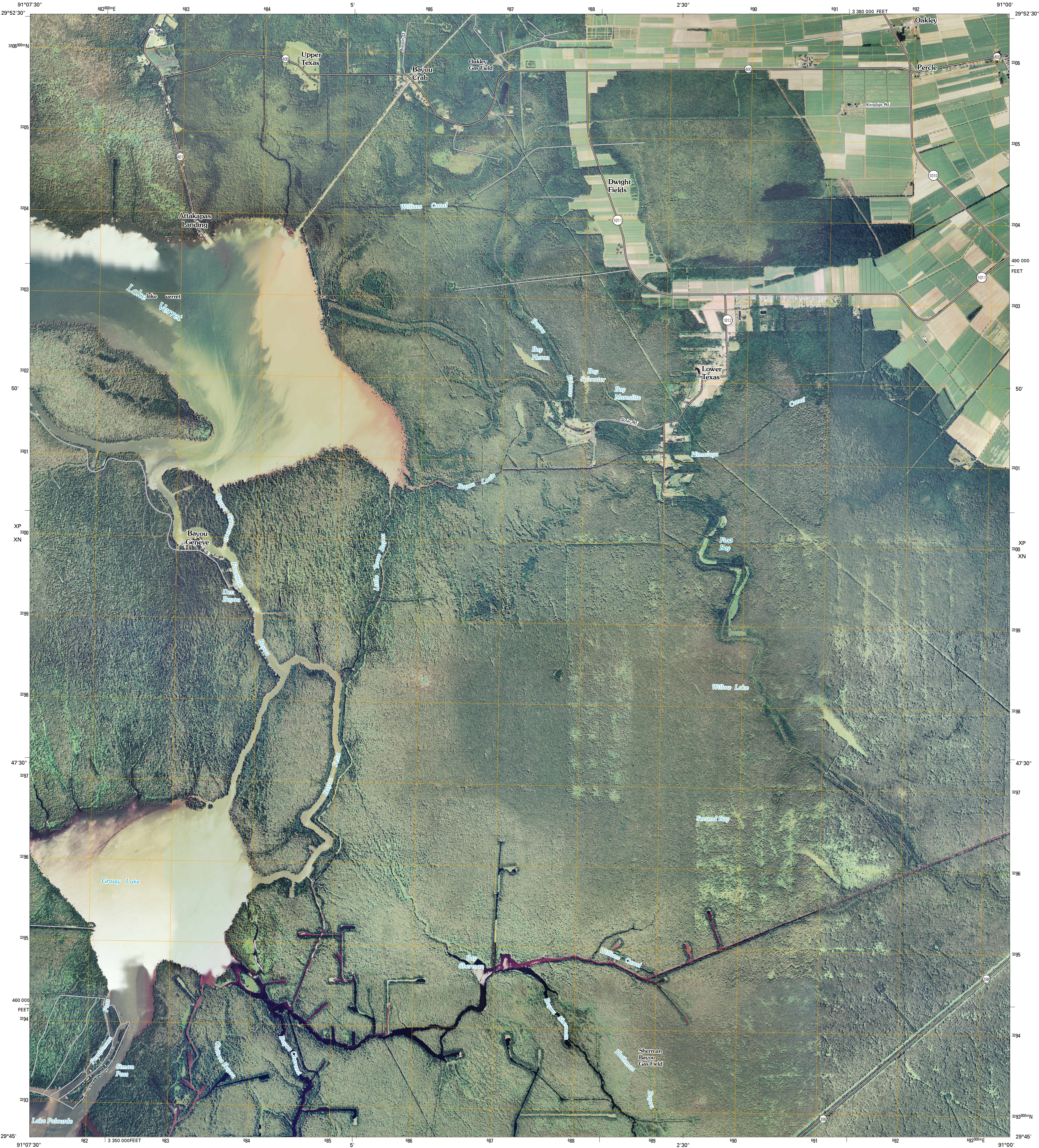




U.S. DEPARTMENT OF THE INTERIOR  
U. S. GEOLOGICAL SURVEY



GRASSY LAKE QUADRANGLE  
LOUISIANA  
7.5-MINUTE SERIES

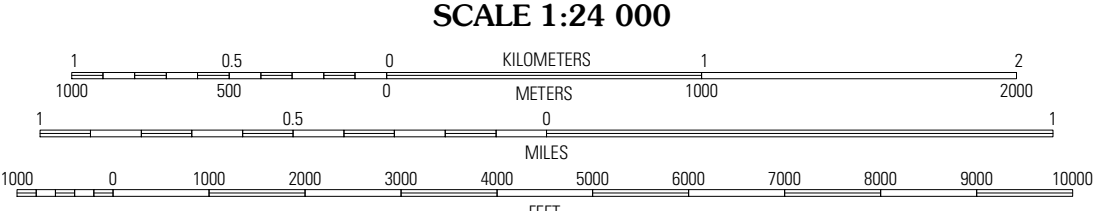


Produced by the United States Geological Survey  
North American Datum of 1983 (NAD83)  
World Geodetic System of 1984 (WGS84). Projection and  
1 000-meter grid: Universal Transverse Mercator, Zone 15R  
10 000-foot ticks: Louisiana Coordinate System of 1983  
(south zone)

Imagery.....NAIP, September 2007  
Roads.....National Transportation Dataset, 2004 - 2005  
Names.....GNIS, 2008

UTM GRID AND 2009 MAGNETIC NORTH  
DECLINATION AT CENTER OF SHEET

U.S. National Grid  
100,000-m Square ID  
XP  
XN  
Grid Zone Designation  
15R



This map was produced to conform with version 0.0.25 of the  
draft USGS Standards for 7.5-Minute Quadrangle Maps.  
A metadata file associated with this product is also draft version 0.0.25



QUADRANGLE LOCATION		
Pierre Part	Napoleonville	Madewood
Napoleonville SW	Grassy Lake	Labadieville
Morgan City	Amelia	Gibson

ADJOINING 7.5' QUADRANGLES  
LA 2991-441

ROAD CLASSIFICATION

Interstate Route  
US Route  
Ramp

State Route  
Local Road  
4WD

GRASSY LAKE, LA  
2009