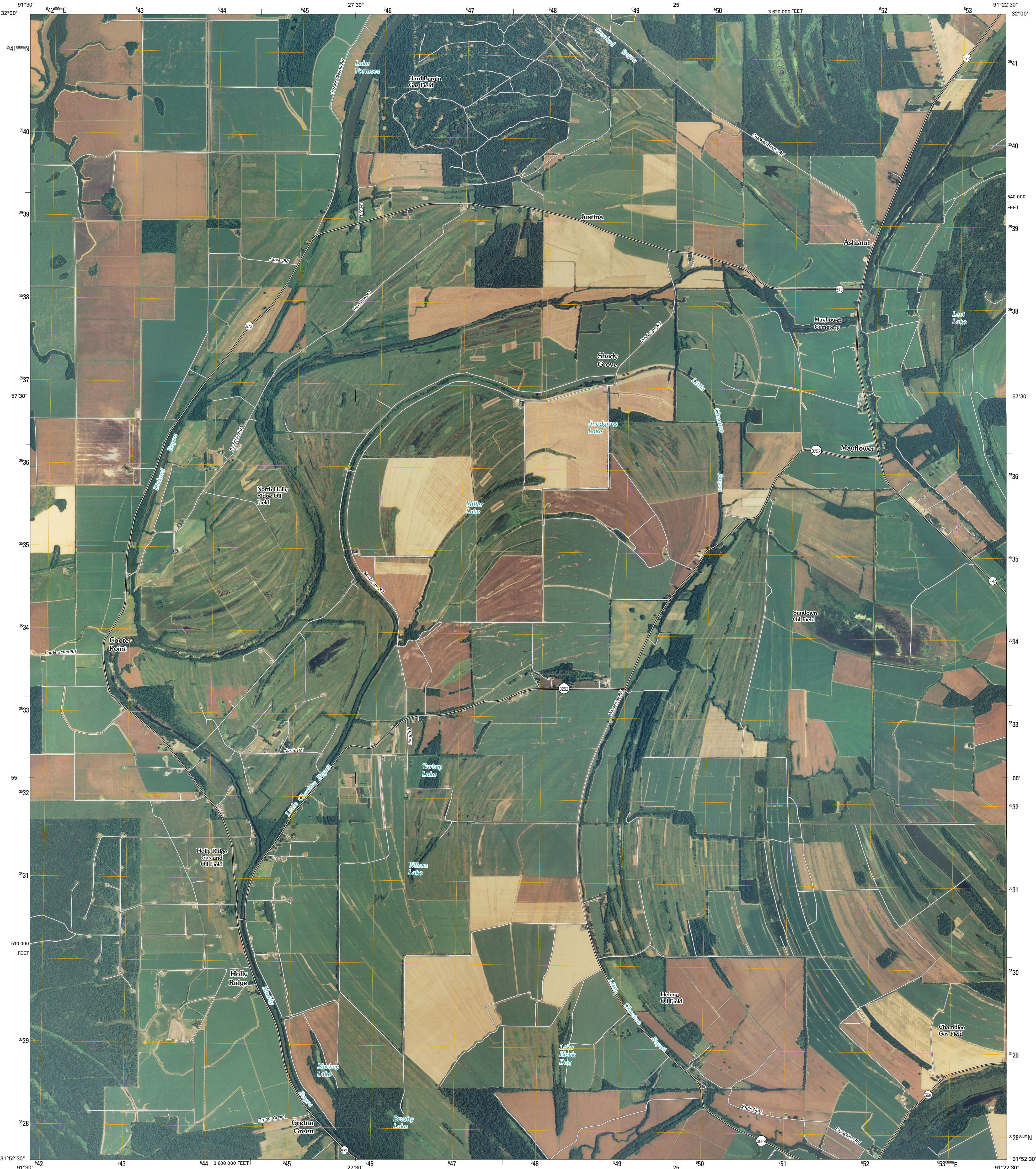




U.S. DEPARTMENT OF THE INTERIOR
U. S. GEOLOGICAL SURVEY



GRETNA GREEN QUADRANGLE
LOUISIANA
7.5-MINUTE SERIES

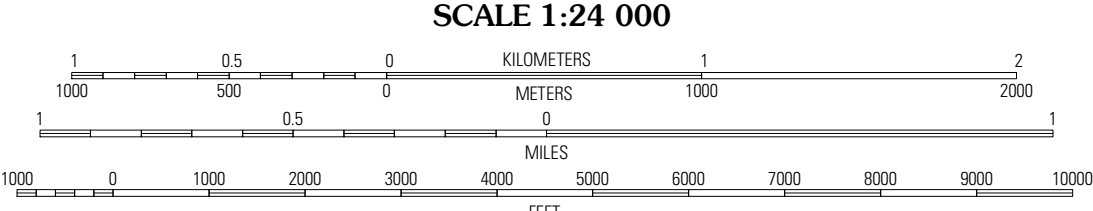


Produced by the United States Geological Survey
North American Datum of 1983 (NAD83)
World Geodetic System of 1984 (WGS84). Projection and
1 000-meter grid: Universal Transverse Mercator, Zone 15R
10 000-foot ticks: Louisiana Coordinate System of 1983
(north zone)

Imagery.....NAIP, August 2007
Roads.....National Transportation Dataset, 2004
Names.....GNIS, 2008

UTM GRID AND 2009 MAGNETIC NORTH
DECLINATION AT CENTER OF SHEET

| |
|-----------------------|
| U.S. National Grid |
| 100 000-m Square ID |
| XR |
| Grid Zone Designation |
| 15R |



This map was produced to conform with version 0.0.25 of the
draft USGS Standards for 7.5-Minute Quadrangle Maps.
A metadata file associated with this product is also draft version 0.0.25



| | | |
|--------|--------------|------------|
| Como | Newlight | Saranac |
| Oakley | Gretna Green | Lake Bruin |
| Foules | Waterproof | Chambliss |

ADJOINING 7.5' QUADRANGLES
LA 3191-433

ROAD CLASSIFICATION

| | |
|------------------|-------------|
| Interstate Route | State Route |
| US Route | Local Road |
| Ramp | 4WD |

Legend: Interstate Route (blue circle), US Route (white circle), State Route (black circle)

GRETNA GREEN, LA
2009