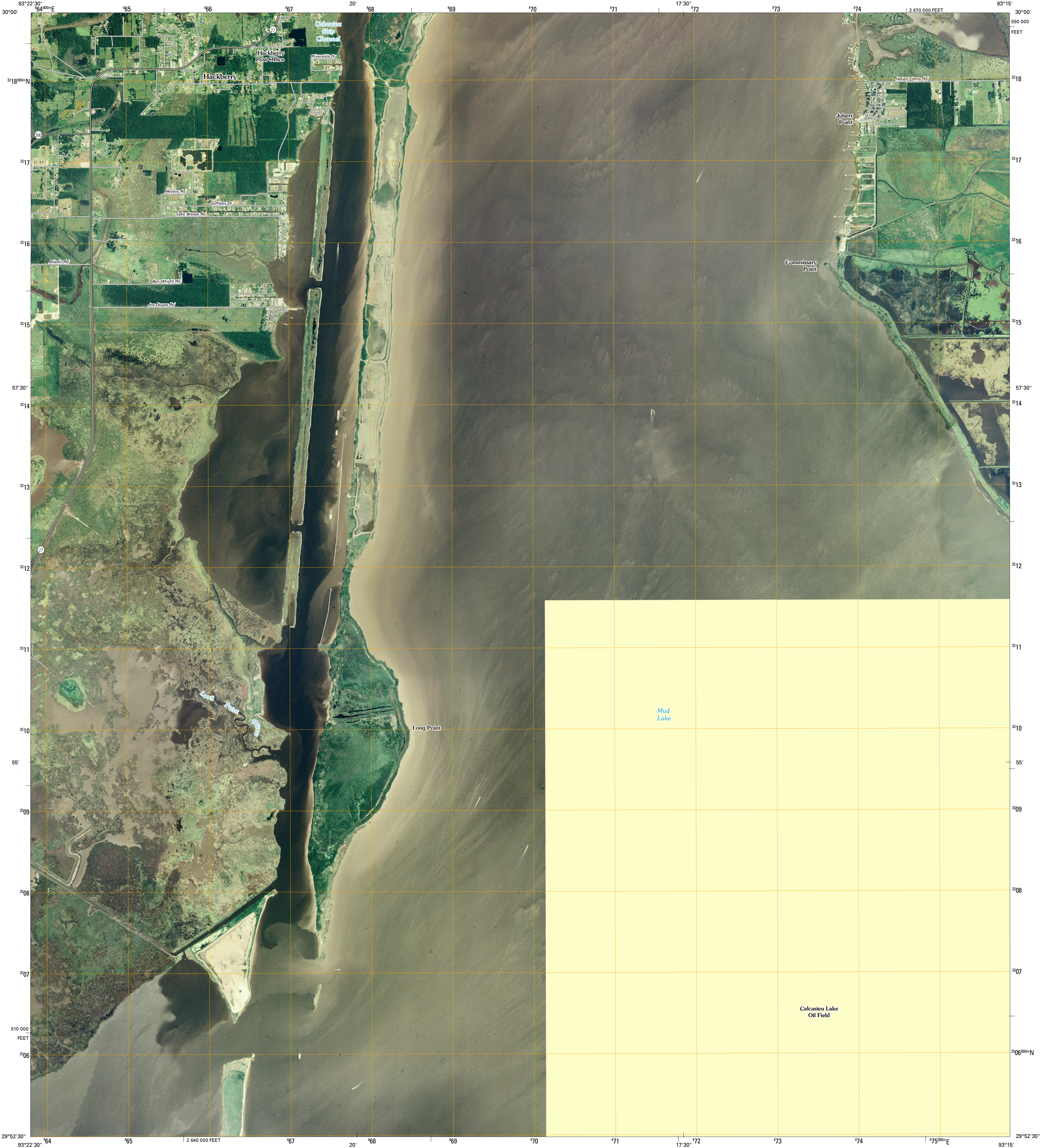




U.S. DEPARTMENT OF THE INTERIOR  
U. S. GEOLOGICAL SURVEY

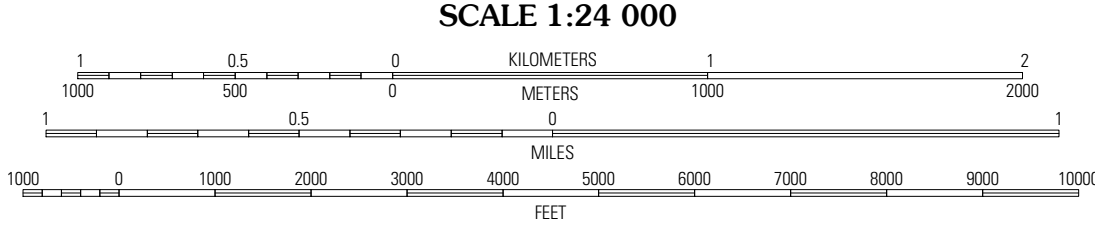
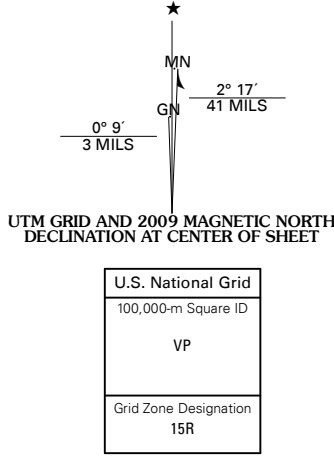


HACKBERRY QUADRANGLE  
LOUISIANA  
7.5-MINUTE SERIES

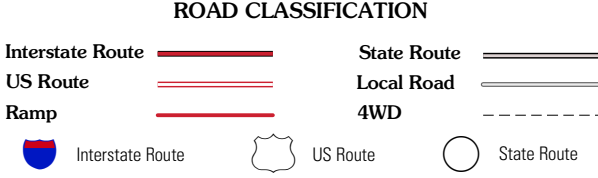
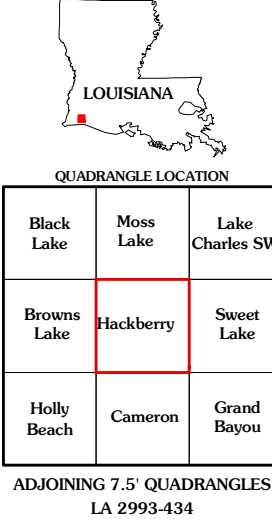


Produced by the United States Geological Survey  
North American Datum of 1983 (NAD83)  
World Geodetic System of 1984 (WGS84). Projection and  
1 000-meter grid: Universal Transverse Mercator, Zone 15R  
10 000-foot ticks: Louisiana Coordinate System of 1983  
(south zone)

Imagery.....NAIP, July 2007  
Roads.....National Transportation Dataset, 2004  
Names.....GNIS, 2008



This map was produced to conform with version 0.0.25 of the  
draft USGS Standards for 7.5-Minute Quadrangle Maps.  
A metadata file associated with this product is also draft version 0.0.25



HACKBERRY, LA  
2009