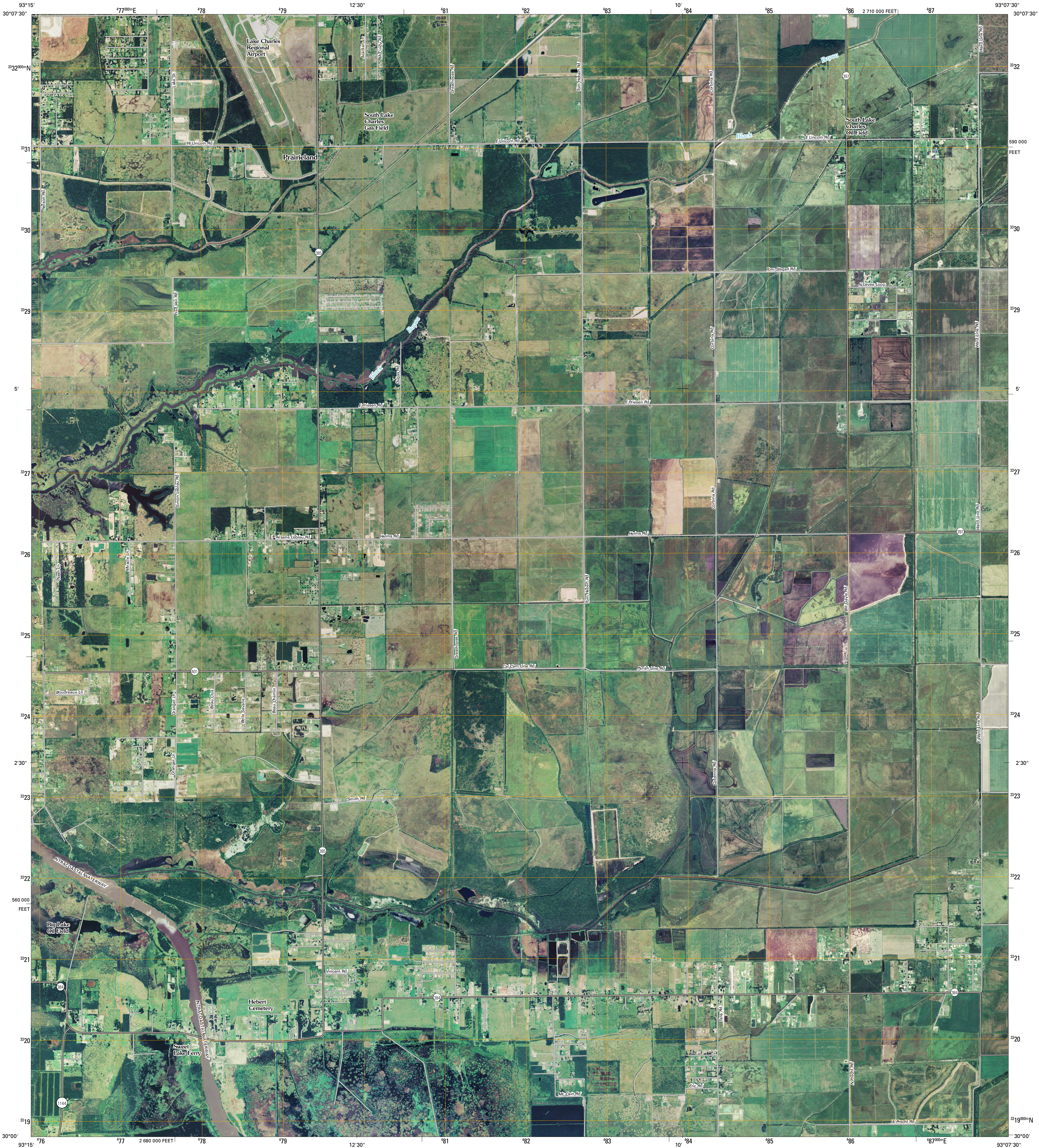




U.S. DEPARTMENT OF THE INTERIOR  
U. S. GEOLOGICAL SURVEY

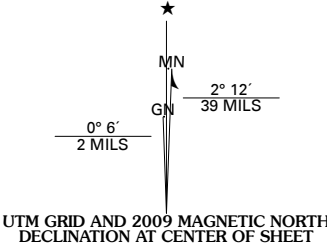


LAKE CHARLES SW QUADRANGLE  
LOUISIANA  
7.5-MINUTE SERIES

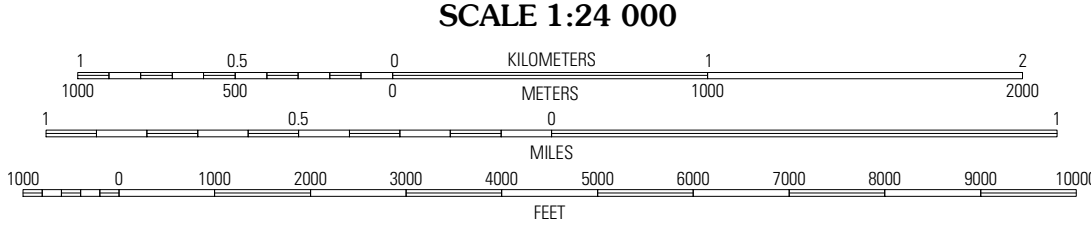


Produced by the United States Geological Survey  
North American Datum of 1983 (NAD83)  
World Geodetic System of 1984 (WGS84). Projection and  
1 000-meter grid: Universal Transverse Mercator, Zone 15R  
10 000-foot ticks: Louisiana Coordinate System of 1983  
(south zone)

Imagery.....NAIP, July 2007 - September 2007  
Roads.....National Transportation Dataset, 2004  
Names.....GNIS, 2008



U.S. National Grid
100,000-m Square ID
VP
Grid Zone Designation
15R

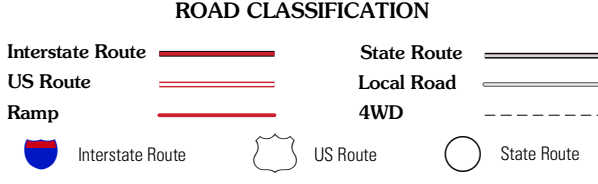


This map was produced to conform with version 0.0.25 of the  
draft USGS Standards for 7.5-Minute Quadrangle Maps.  
A metadata file associated with this product is also draft version 0.0.25



QUADRANGLE LOCATION		
Westlake	Lake Charles	Iowa
Moss Lake	Lake Charles SW	Lake Charles SE
Hickberry	Sweet Lake	Boudreaux Lake

ADJOINING 7.5 QUADRANGLES  
LA 3093-112



LAKE CHARLES SW, LA  
2009