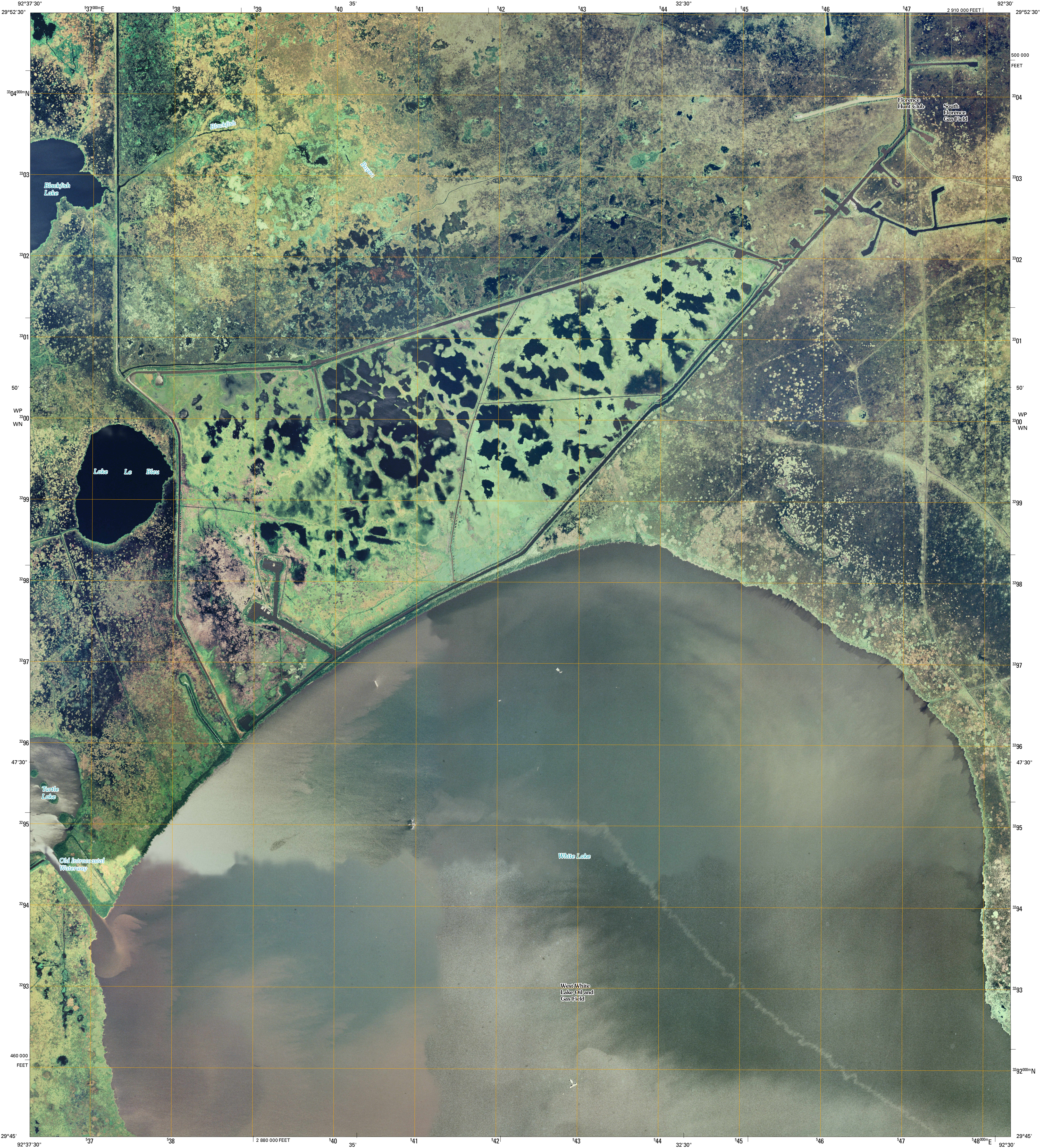




U.S. DEPARTMENT OF THE INTERIOR  
U. S. GEOLOGICAL SURVEY

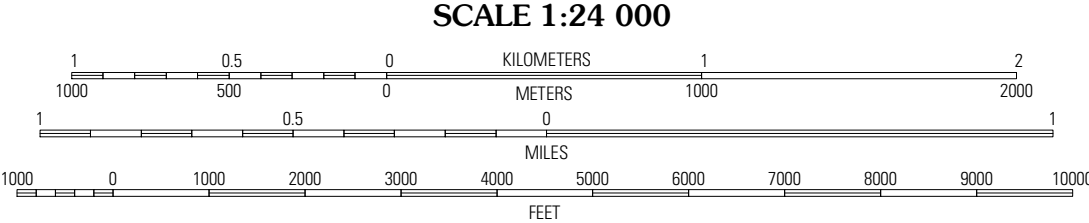
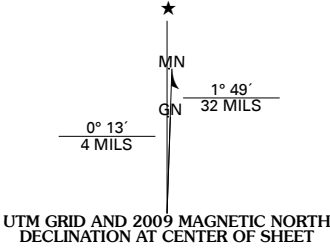


LAKE LE BLEU QUADRANGLE  
LOUISIANA  
7.5-MINUTE SERIES



Produced by the United States Geological Survey  
North American Datum of 1983 (NAD83)  
World Geodetic System of 1984 (WGS84). Projection and  
1 000-meter grid: Universal Transverse Mercator, Zone 15R  
10 000-foot ticks: Louisiana Coordinate System of 1983  
(south zone)

Imagery.....NAIP, September 2007  
Roads.....National Transportation Dataset, 2004  
Names.....GNIS, 2008

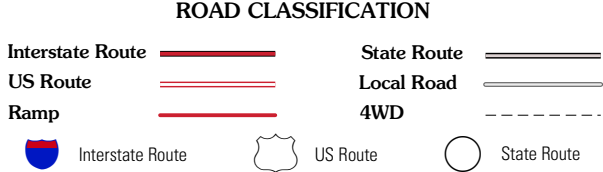


This map was produced to conform with version 0.0.25 of the  
draft USGS Standards for 7.5-Minute Quadrangle Maps.  
A metadata file associated with this product is also draft version 0.0.25



QUADRANGLE LOCATION		
Mallard Bay	Latanier Bayou	Forked Island NW
Colchon Lake	Lake Le Bleu	Jacks Point Island
Deep Lake	Floating Turf Bayou	Pecan Island

ADJOINING 7.5' QUADRANGLES  
LA 2992-341



LAKE LE BLEU, LA  
2009