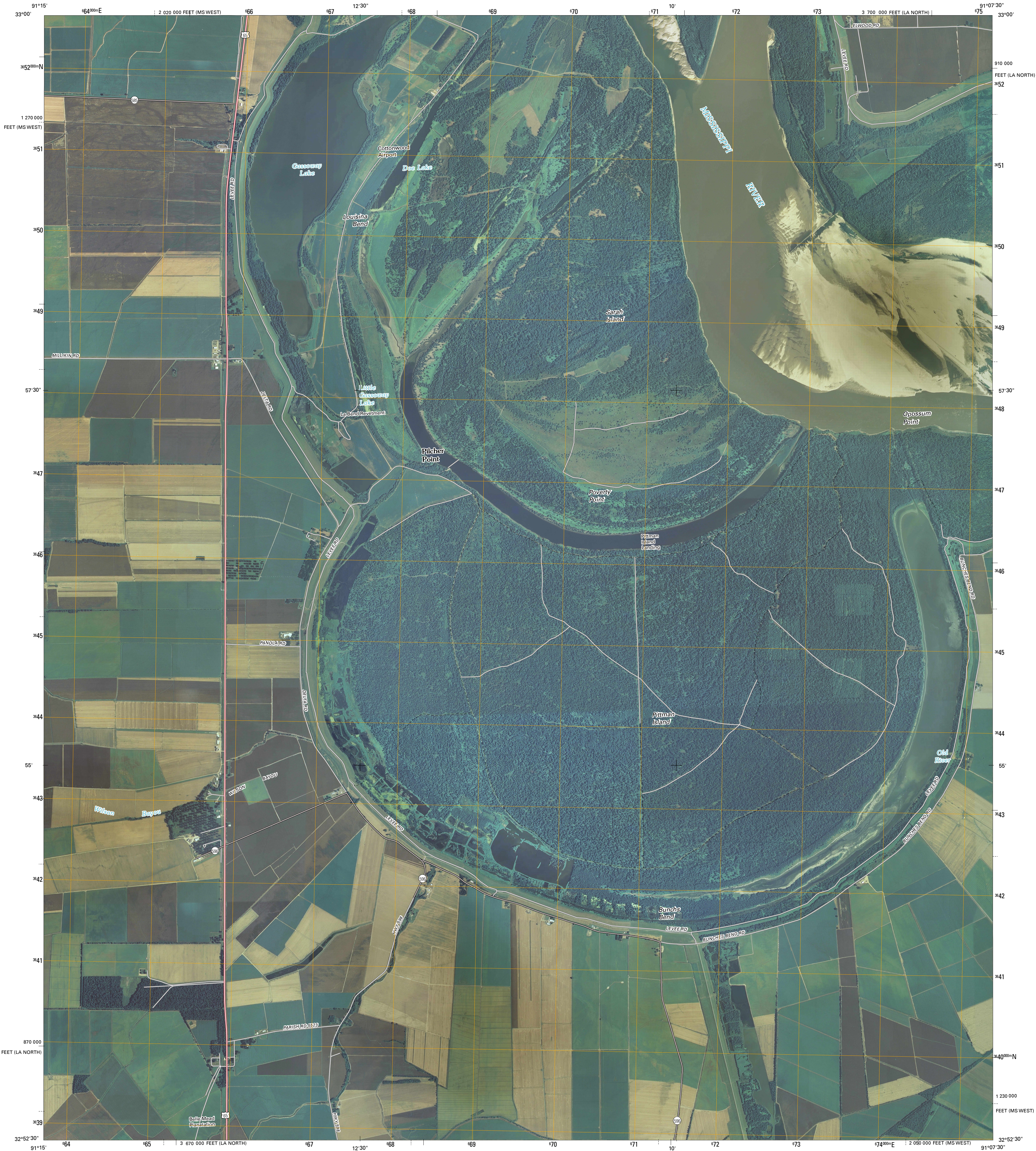




U.S. DEPARTMENT OF THE INTERIOR
U. S. GEOLOGICAL SURVEY

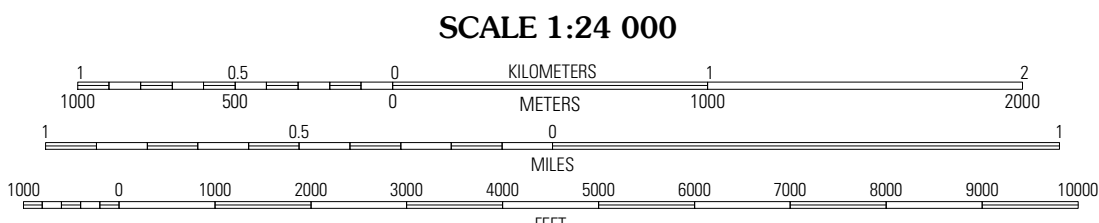
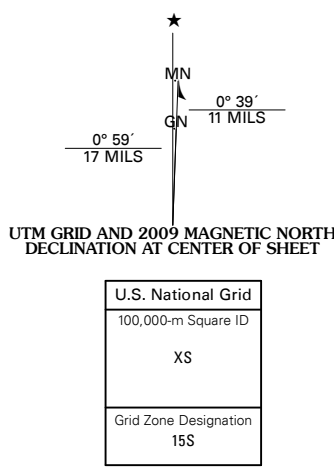


MILLIKIN QUADRANGLE
LOUISIANA-MISSISSIPPI
7.5-MINUTE SERIES

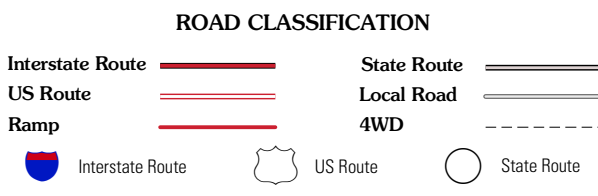
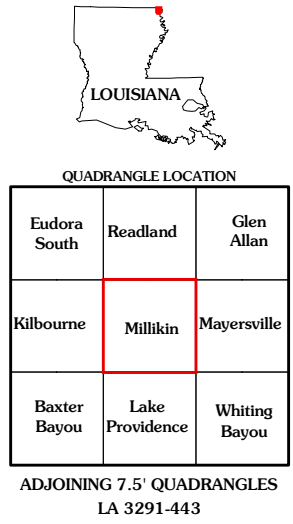


Produced by the United States Geological Survey
North American Datum of 1983 (NAD83)
World Geodetic System of 1984 (WGS84). Projection and
1 000-meter grid: Universal Transverse Mercator, Zone 15S
10 000-foot ticks: Louisiana Coordinate System of 1983
(north zone)
and Mississippi Coordinate System of 1983
(west zone)

Imagery.....NAIP, August 2007
Roads.....National Transportation Dataset, 2004 - 2005
Names.....GNIS, 2008



This map was produced to conform with version 0.0.25 of the
draft USGS Standards for 7.5-Minute Quadrangle Maps.
A metadata file associated with this product is also draft version 0.0.25



MILLIKIN, LA-MS
2009