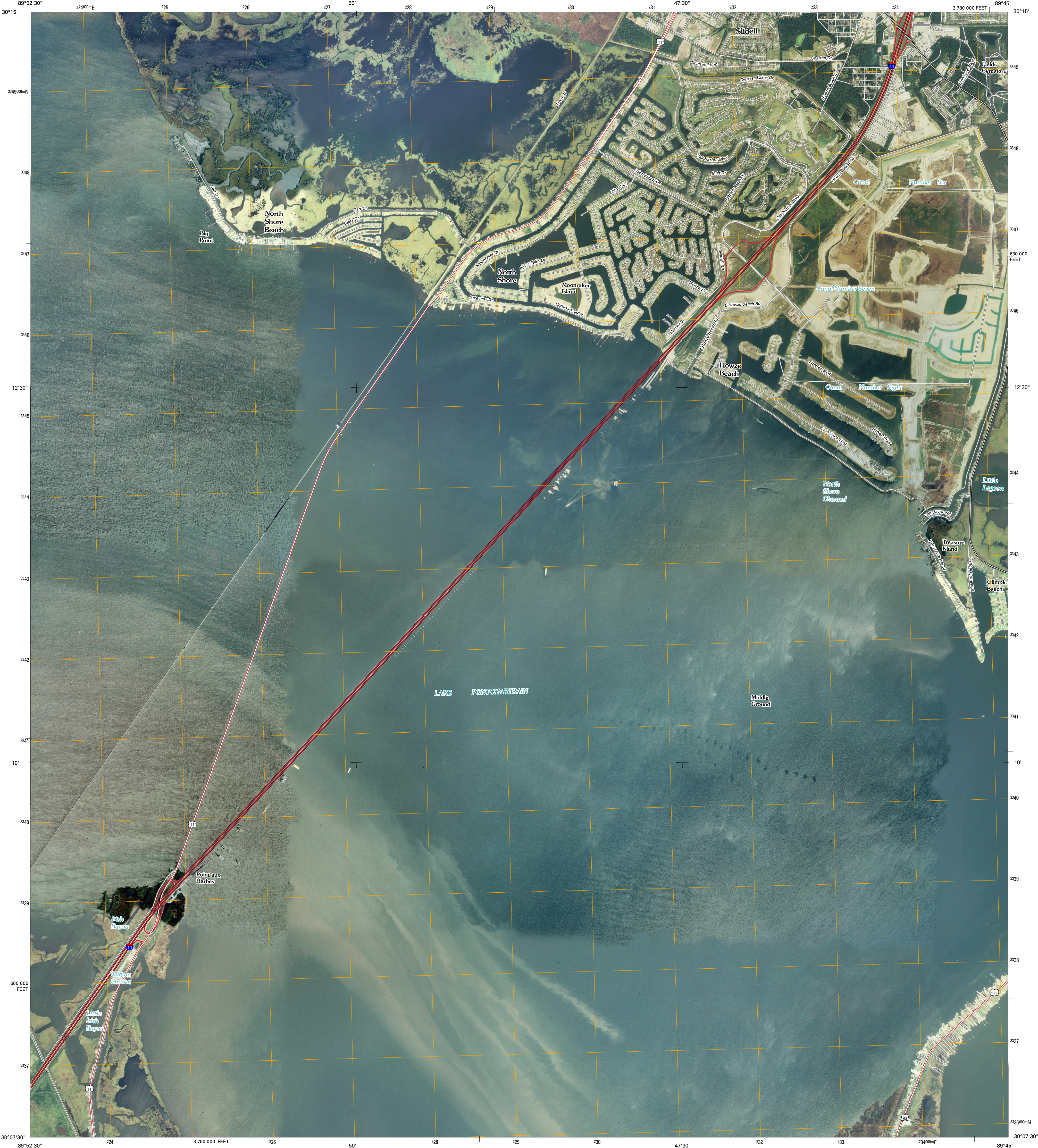




U.S. DEPARTMENT OF THE INTERIOR
U. S. GEOLOGICAL SURVEY

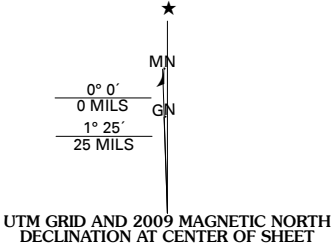


NORTH SHORE QUADRANGLE
LOUISIANA
7.5-MINUTE SERIES

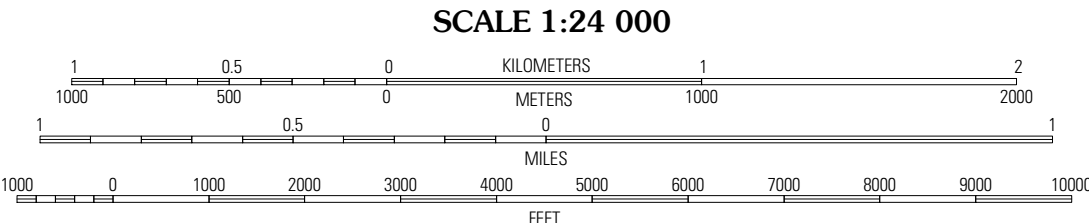


Produced by the United States Geological Survey
North American Datum of 1983 (NAD83)
World Geodetic System of 1984 (WGS84). Projection and
1 000-meter grid: Universal Transverse Mercator, Zone 16R
10 000-foot ticks: Louisiana Coordinate System of 1983
(south zone)

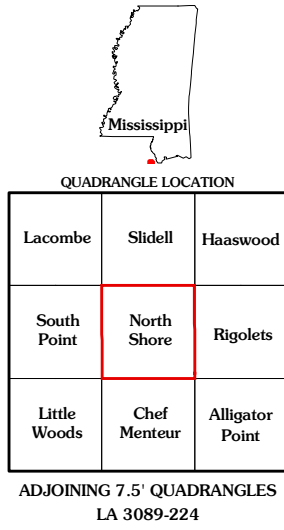
Imagery.....NAIP, September 2007
Roads.....National Transportation Dataset, 2004 - 2008
Names.....GNIS, 2008



U.S. National Grid
100,000m Square ID
BU
Grid Zone Designation
18R

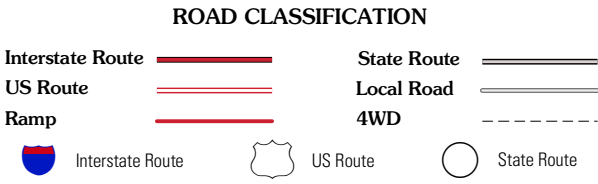


This map was produced to conform with version 0.0.25 of the
draft USGS Standards for 7.5-Minute Quadrangle Maps.
A metadata file associated with this product is also draft version 0.0.25



QUADRANGLE LOCATION		
Lacombe	Slidell	Haaswood
South Point	North Shore	Rigolets
Little Woods	Chef Menteur	Alligator Point

ADJOINING 7.5' QUADRANGLES
LA 3089-224



NORTH SHORE, LA
2009