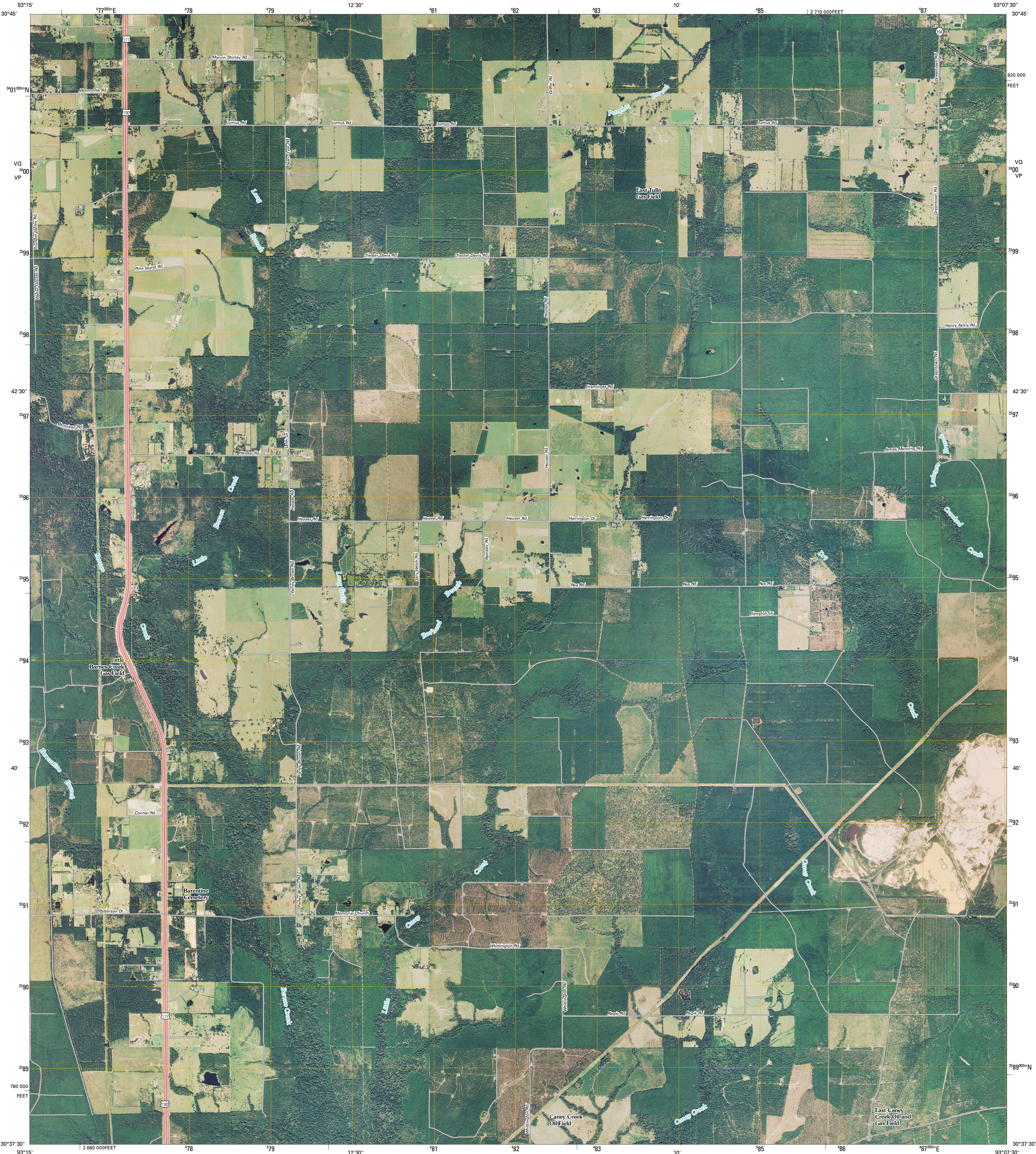




U.S. DEPARTMENT OF THE INTERIOR  
U. S. GEOLOGICAL SURVEY

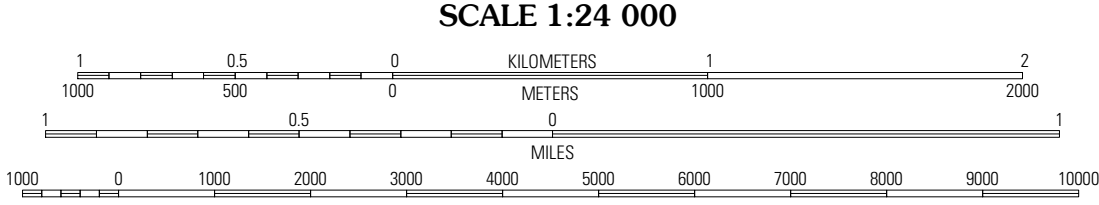
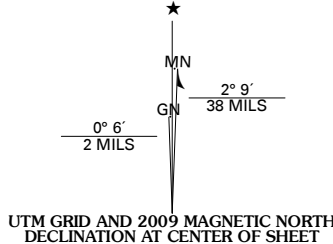


REDHEAD BRANCH QUADRANGLE  
LOUISIANA  
7.5-MINUTE SERIES



Produced by the United States Geological Survey  
North American Datum of 1983 (NAD83)  
World Geodetic System of 1984 (WGS84). Projection and  
1 000-meter grid: Universal Transverse Mercator, Zone 15R  
10 000-foot ticks: Louisiana Coordinate System of 1983  
(south zone)

Imagery.....NAIP, September 2007  
Roads.....National Transportation Dataset, 2006  
Names.....GNIS, 2008

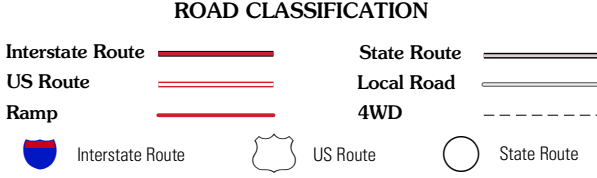


This map was produced to conform with version 0.0.25 of the  
draft USGS Standards for 7.5-Minute Quadrangle Maps.  
A metadata file associated with this product is also draft version 0.0.25



QUADRANGLE LOCATION		
DeRidder	Bonnet Creek	Sugartown
Mach Branch	Redhead Branch	Dry Creek
Kerman	Longville	Reeves

ADJOINING 7.5 QUADRANGLES  
LA 3093-413



REDHEAD BRANCH, LA  
2009