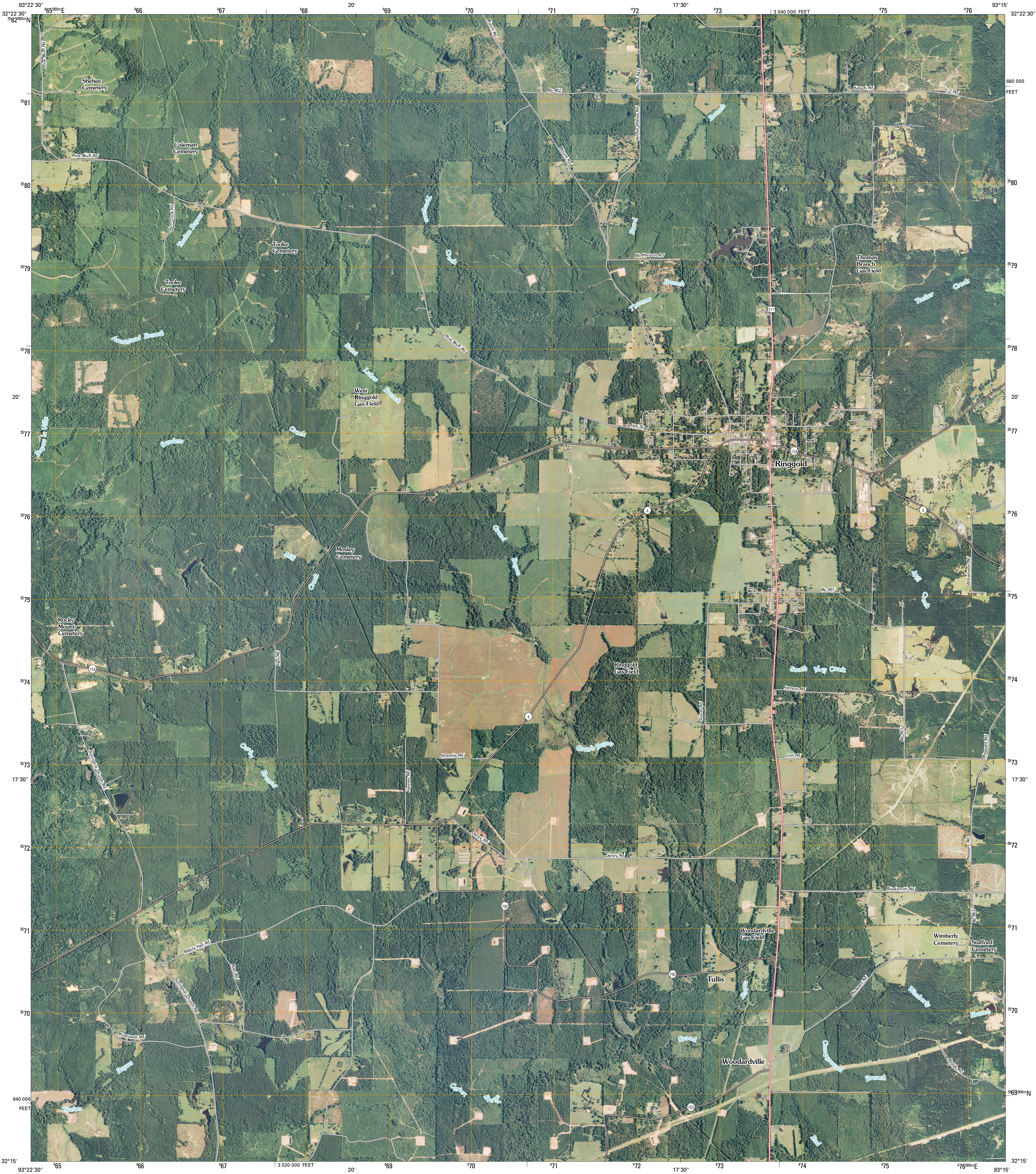




U.S. DEPARTMENT OF THE INTERIOR  
U. S. GEOLOGICAL SURVEY

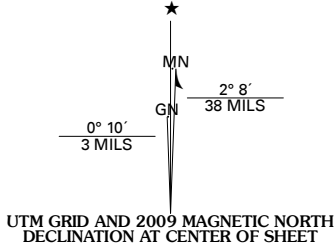


RINGGOLD QUADRANGLE  
LOUISIANA  
7.5-MINUTE SERIES

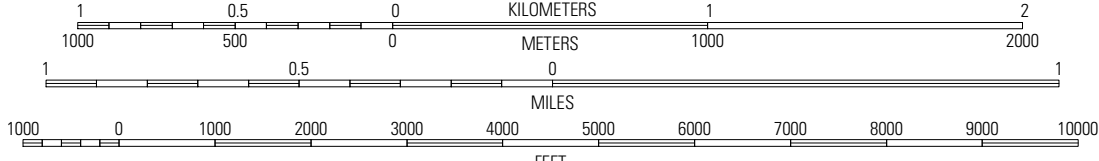


Produced by the United States Geological Survey  
North American Datum of 1983 (NAD83)  
World Geodetic System of 1984 (WGS84). Projection and  
1 000-meter grid: Universal Transverse Mercator, Zone 15S  
10 000-foot ticks: Louisiana Coordinate System of 1983  
(north zone)

Imagery.....NAIP, July 2007  
Roads.....National Transportation Dataset, 2008  
Names.....GNIS, 2008



SCALE 1:24 000



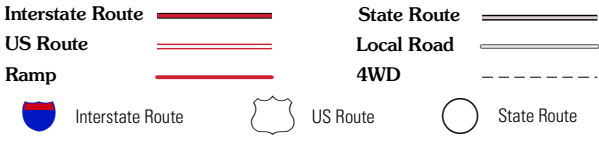
This map was produced to conform with version 0.0.25 of the  
draft USGS Standards for 7.5-Minute Quadrangle Maps.  
A metadata file associated with this product is also draft version 0.0.25



QUADRANGLE LOCATION		
Koran	Heflin	Fryburg
Bossier Point	Ringgold	Jamestown
East Point	Hall Summit	Boz

ADJOINING 7.5' QUADRANGLES  
LA 3293-131

ROAD CLASSIFICATION



RINGGOLD, LA  
2009