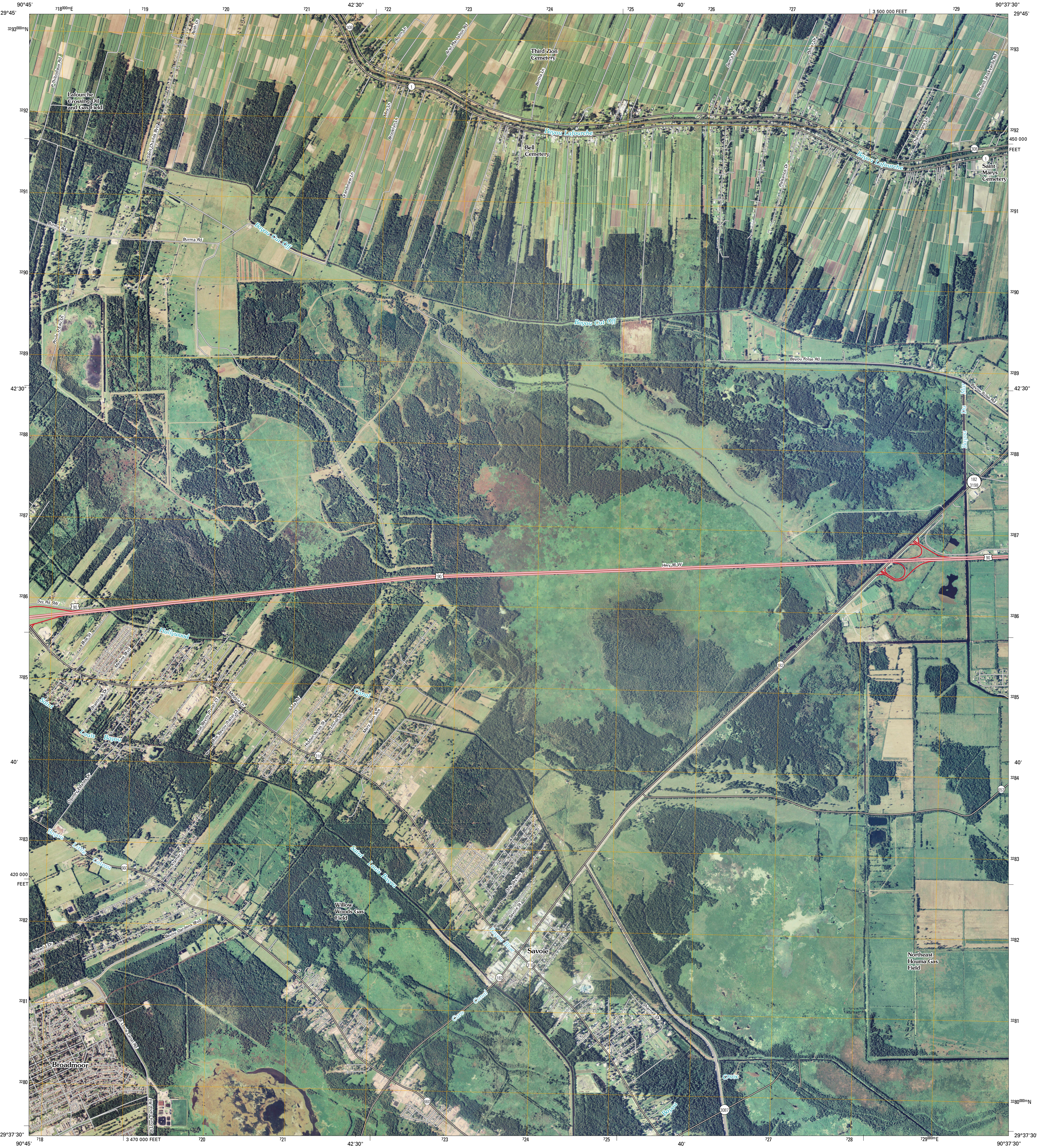




U.S. DEPARTMENT OF THE INTERIOR
U. S. GEOLOGICAL SURVEY



SAVOIE QUADRANGLE
LOUISIANA
7.5-MINUTE SERIES

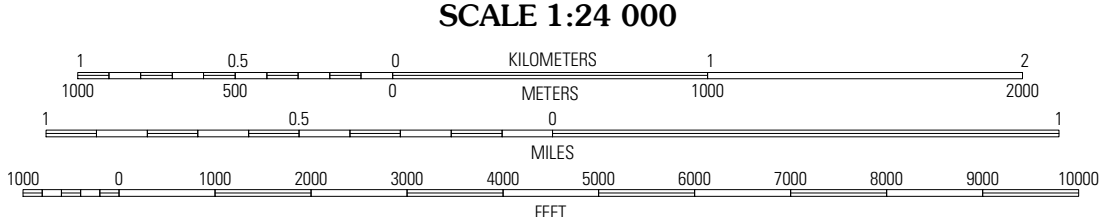


Produced by the United States Geological Survey
North American Datum of 1983 (NAD83)
World Geodetic System of 1984 (WGS84). Projection and
1 000-meter grid: Universal Transverse Mercator, Zone 15R
10 000-foot ticks: Louisiana Coordinate System of 1983
(south zone)

Imagery.....NAIP, September 2007
Roads.....National Transportation Dataset, 2004 - 2008
Names.....GNIS, 2008

UTM GRID AND 2009 MAGNETIC NORTH
DECLINATION AT CENTER OF SHEET

U.S. National Grid 100,000-m Square ID
YN
Grid Zone Designation 15R



This map was produced to conform with version 0.0.25 of the
draft USGS Standards for 7.5-Minute Quadrangle Maps.
A metadata file associated with this product is also draft version 0.0.25



QUADRANGLE LOCATION		
Thibodaux	Kraemer	Bayou Boeuf
Gray	Savoie	Lockport
Humphreys	Houma	Bourg

ADJOINING 7.5 QUADRANGLES
LA 2990-313

ROAD CLASSIFICATION

Interstate Route	State Route
US Route	Local Road
Ramp	4WD

Legend: Interstate Route (blue shield), US Route (white shield), State Route (black circle), Local Road (black line), 4WD (dashed line)

SAVOIE, LA
2009