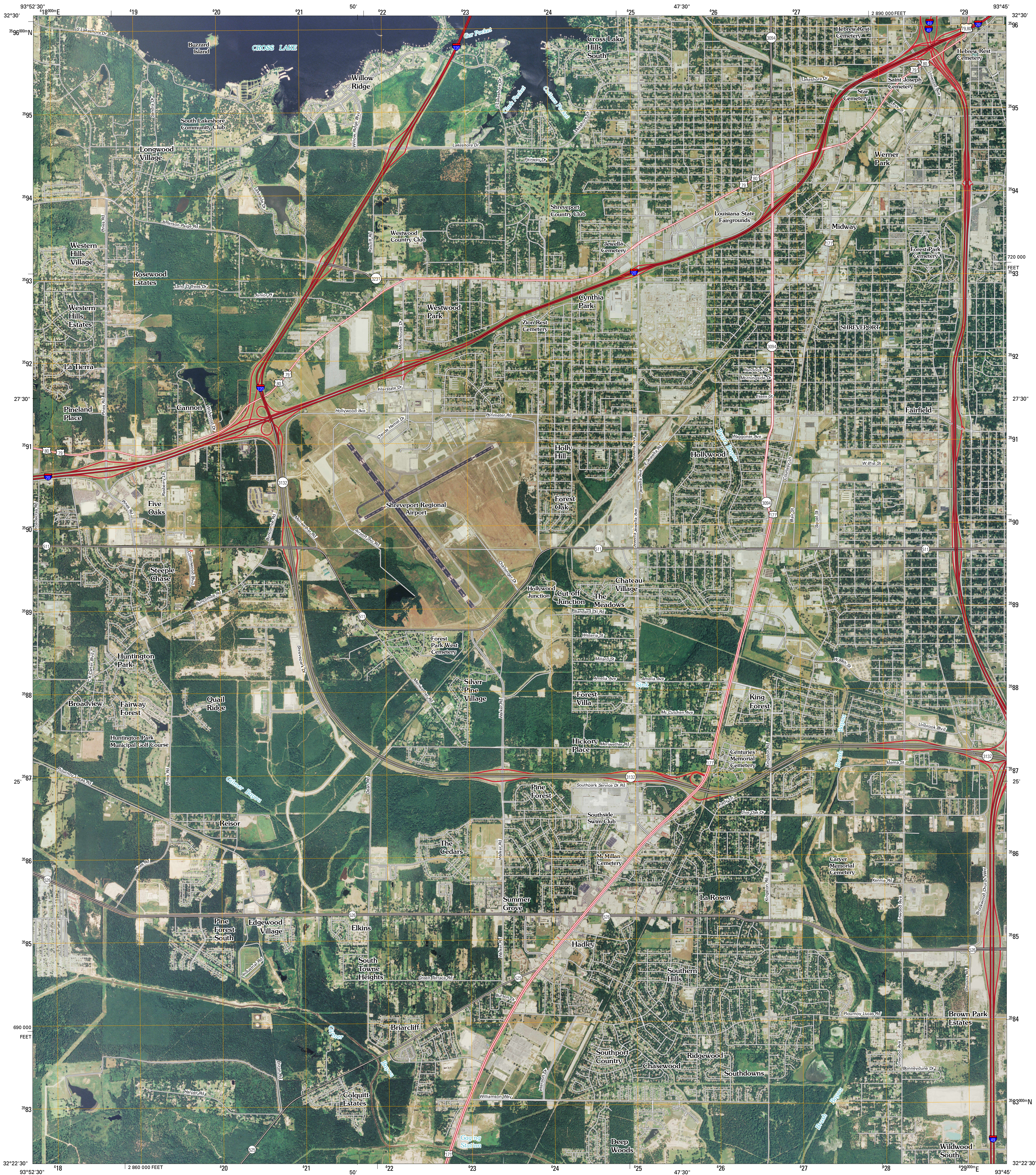




U.S. DEPARTMENT OF THE INTERIOR
U. S. GEOLOGICAL SURVEY



SHREVEPORT WEST QUADRANGLE
LOUISIANA
7.5-MINUTE SERIES

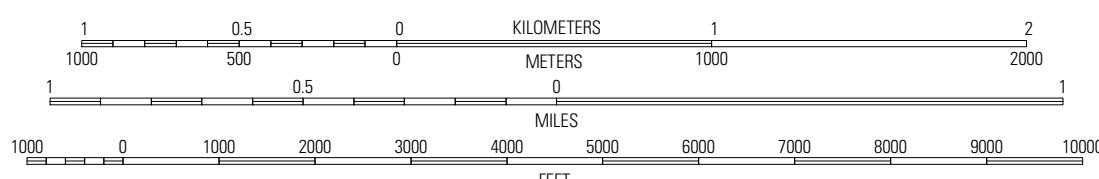


Produced by the United States Geological Survey
North American Datum of 1983 (NAD83)
World Geodetic System of 1984 (WGS84). Projection and
1 000-meter grid: Universal Transverse Mercator, Zone 15S
10 000-foot ticks: Louisiana Coordinate System of 1983
(north zone)

UTM GRID AND 2009 MAGNETIC NORTH
DECLINATION AT CENTER OF SHEET

U.S. National Grid
100,000m Square ID
VR
Grid Zone Designation
15S

SCALE 1:24 000



This map was produced to conform with version 0.0.25 of the
draft USGS Standards for 7.5-Minute Quadrangle Maps.
A metadata file associated with this product is also draft version 0.0.25



QUADRANGLE LOCATION		
Blanchard	North Highlands	Bossier City
Greenwood	Shreveport West	Shreveport East
Spring Ridge	Stonewall	Wallace Lake

ADJOINING 7.5 QUADRANGLES
LA 3293-234

ROAD CLASSIFICATION

Interstate Route
US Route
Ramp
State Route
Local Road
4WD

SHREVEPORT WEST, LA
2009