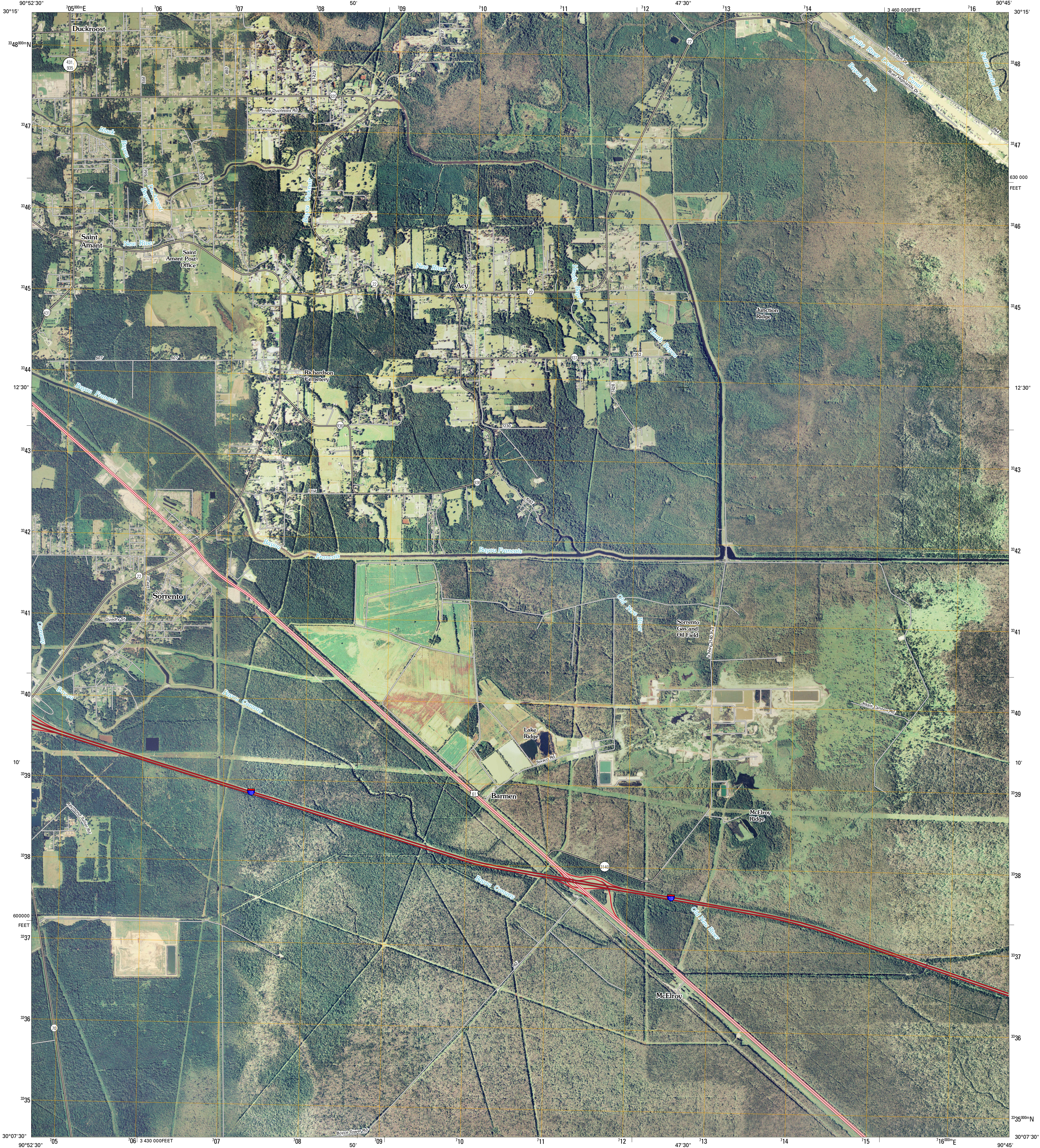




U.S. DEPARTMENT OF THE INTERIOR
U. S. GEOLOGICAL SURVEY



SORRENTO QUADRANGLE
LOUISIANA
7.5-MINUTE SERIES

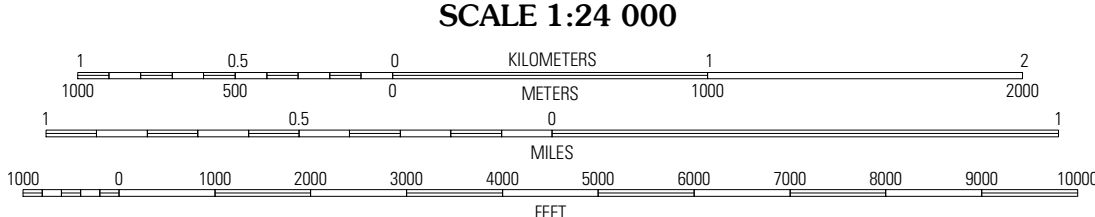


Produced by the United States Geological Survey
North American Datum of 1983 (NAD83)
World Geodetic System of 1984 (WGS84). Projection and
1 000-meter grid: Universal Transverse Mercator, Zone 15R
10 000-foot ticks: Louisiana Coordinate System of 1983
(south zone)

Imagery.....NAIP, September 2007
Roads.....National Transportation Dataset, 2004 - 2008
Names.....GNIS, 2008

UTM GRID AND 2009 MAGNETIC NORTH
DECLINATION AT CENTER OF SHEET

U.S. National Grid
100,000-m Square ID
YP
Grid Zone Designation
15R



This map was produced to conform with version 0.0.25 of the
draft USGS Standards for 7.5-Minute Quadrangle Maps.
A metadata file associated with this product is also draft version 0.0.25



QUADRANGLE LOCATION		
Prairieville	French Settlement	Whitehall
Gonzales	Sorrento	Mount Airy NW
Donaldsonville	Convent	Lutcher

ADJOINING 7.5' QUADRANGLES
LA 3090-224

ROAD CLASSIFICATION		
Interstate Route	State Route	
US Route	Local Road	
Ramp	4WD	
Interstate Route	US Route	State Route

SORRENTO, LA
2009