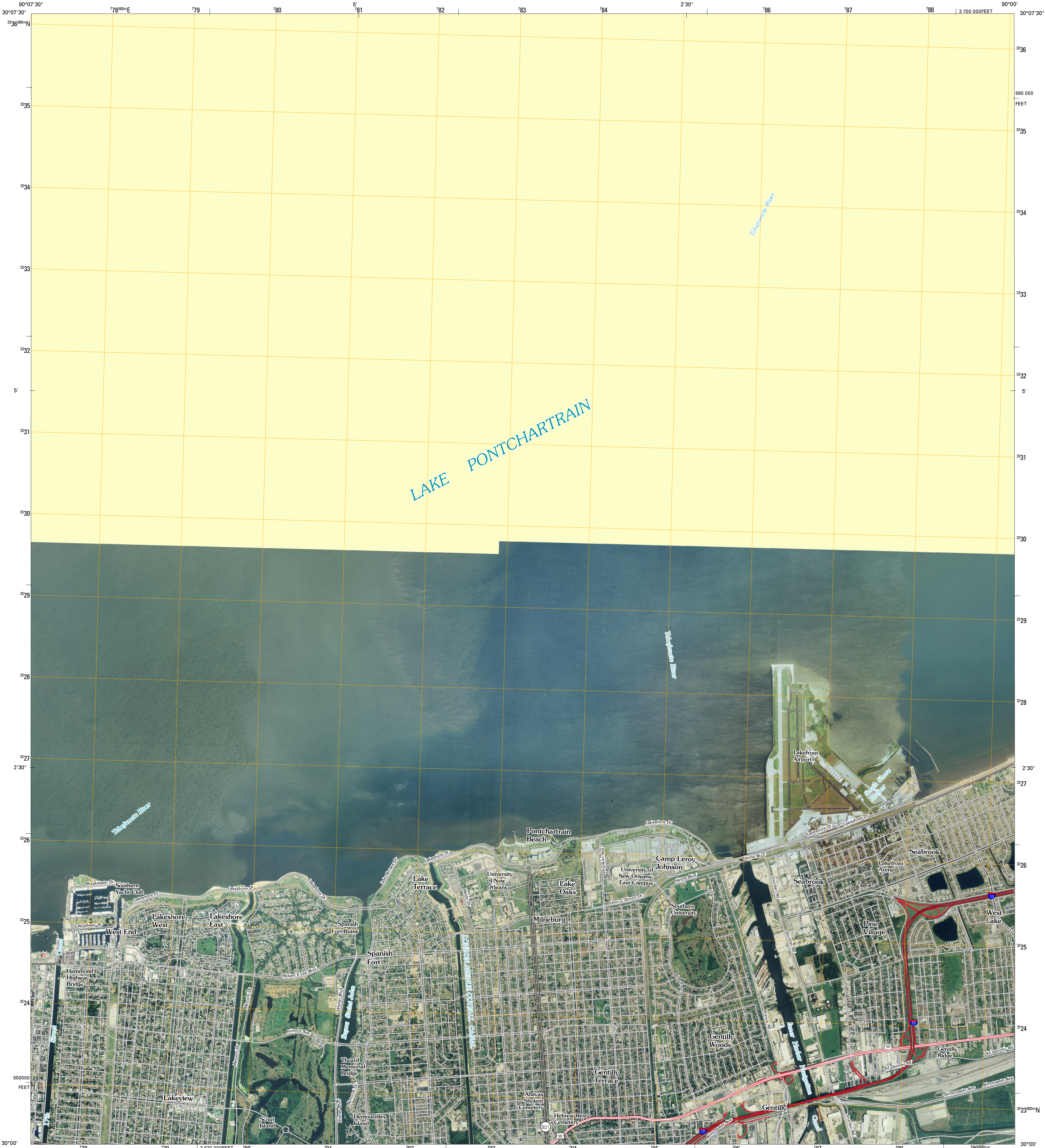




U.S. DEPARTMENT OF THE INTERIOR
U. S. GEOLOGICAL SURVEY

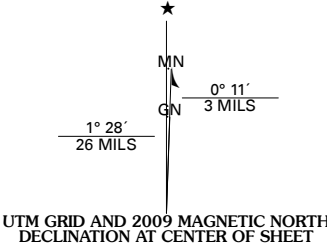


SPANISH FORT QUADRANGLE
LOUISIANA
7.5-MINUTE SERIES

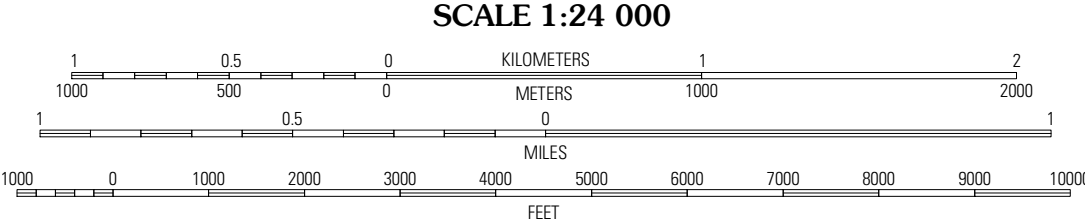


Produced by the United States Geological Survey
North American Datum of 1983 (NAD83)
World Geodetic System of 1984 (WGS84). Projection and
1 000-meter grid: Universal Transverse Mercator, Zone 15R
10 000-foot ticks: Louisiana Coordinate System of 1983
(south zone)

Imagery.....NAIP, September 2007
Roads.....National Transportation Dataset, 2004
Names.....GNIS, 2008



U.S. National Grid
100,000-m Square ID
YP
Grid Zone Designation
15R

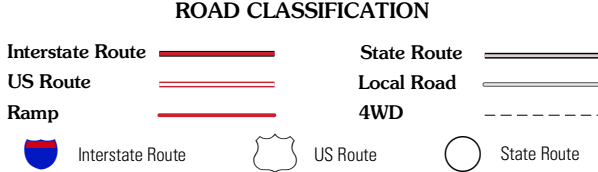


This map was produced to conform with version 0.0.25 of the
draft USGS Standards for 7.5-Minute Quadrangle Maps.
A metadata file associated with this product is also draft version 0.0.25



QUADRANGLE LOCATION			
Spanish Fort NE OE W	Spanish Fort NE	South Point	
Indian Beach	Spanish Fort	Little Woods	
New Orleans West	New Orleans East	Chalmette	

ADJOINING 7.5 QUADRANGLES
LA 3090-111



SPANISH FORT, LA
2009