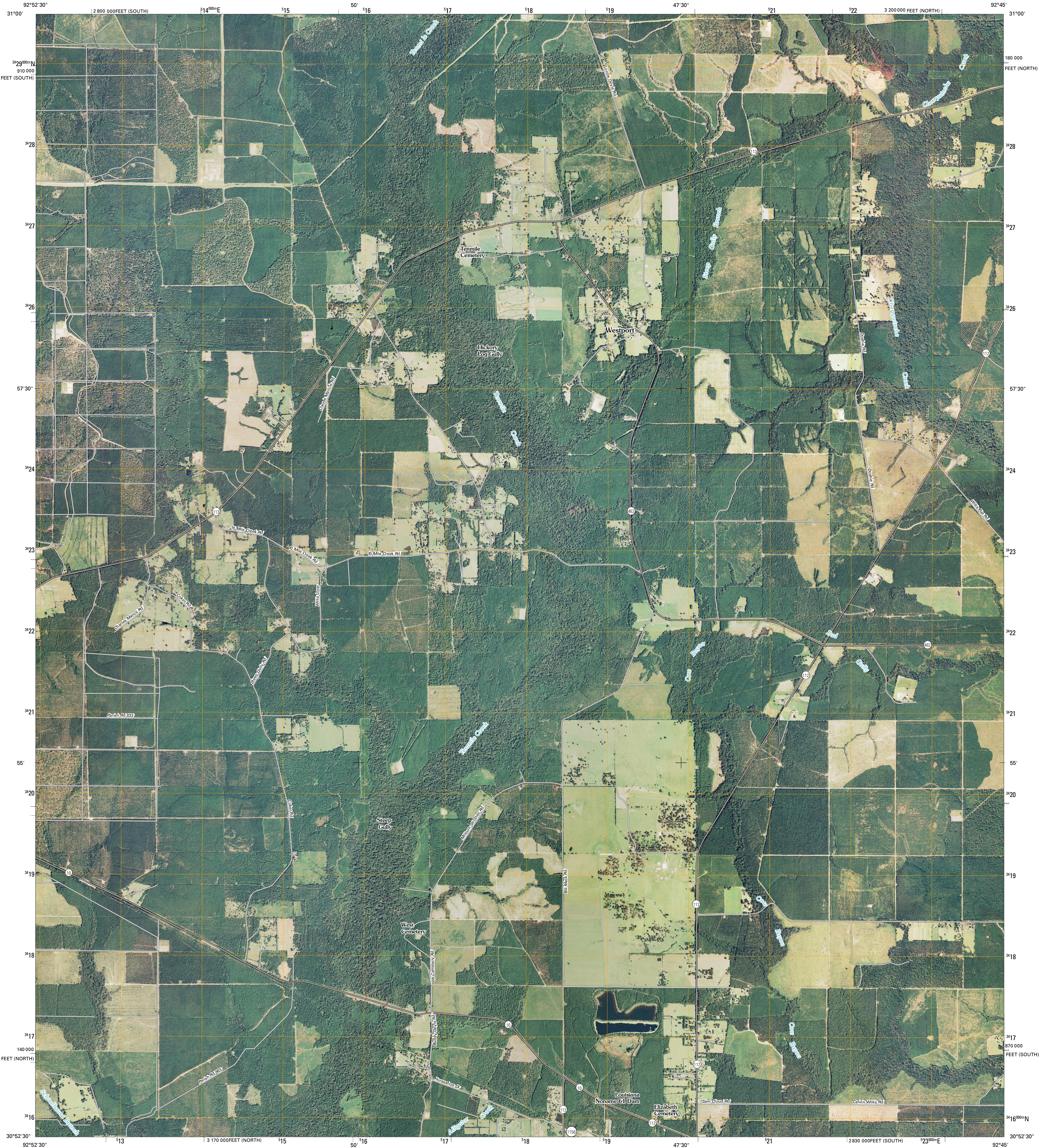




U.S. DEPARTMENT OF THE INTERIOR  
U. S. GEOLOGICAL SURVEY

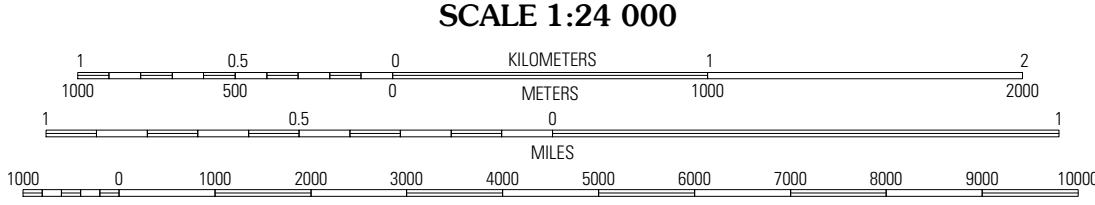
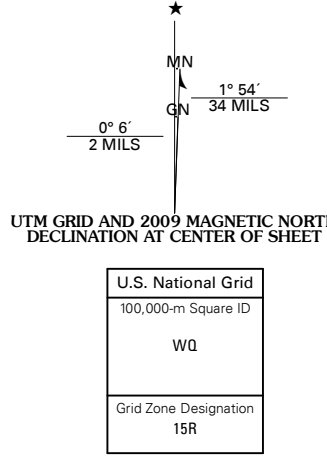


STEEP GULLY QUADRANGLE  
LOUISIANA  
7.5-MINUTE SERIES



Produced by the United States Geological Survey  
North American Datum of 1983 (NAD83)  
World Geodetic System of 1984 (WGS84). Projection and  
1 000-meter grid: Universal Transverse Mercator, Zone 15R  
10 000-foot ticks: Louisiana Coordinate System of 1983  
(north and south zones)

Imagery.....NAIP, September 2007  
Roads.....National Transportation Dataset, 2004 - 2008  
Names.....GNIS, 2008

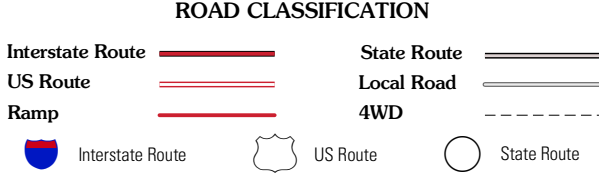


This map was produced to conform with version 0.0.25 of the  
draft USGS Standards for 7.5-Minute Quadrangle Maps.  
A metadata file associated with this product is also draft version 0.0.25



QUADRANGLE LOCATION		
Fullerton Lake	Alaman	Mekler
Pitkin	Steep Gully	Pownsee
Grant	Elizabeth	Oakdale

ADJOINING 7.5' QUADRANGLES  
LA 3092-334



STEEP GULLY, LA  
2009