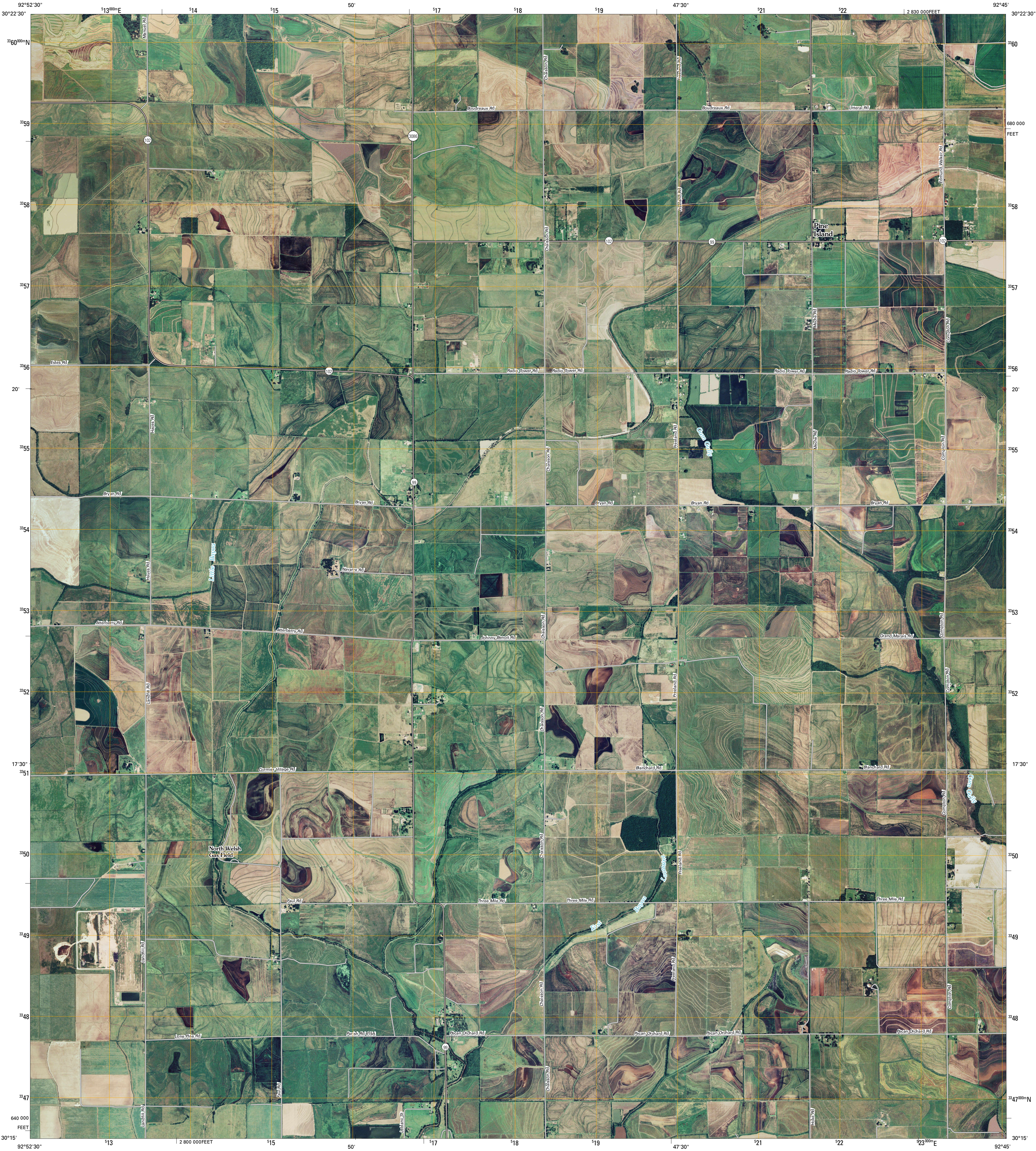




U.S. DEPARTMENT OF THE INTERIOR
U. S. GEOLOGICAL SURVEY



WELSH NORTH QUADRANGLE
LOUISIANA
7.5-MINUTE SERIES

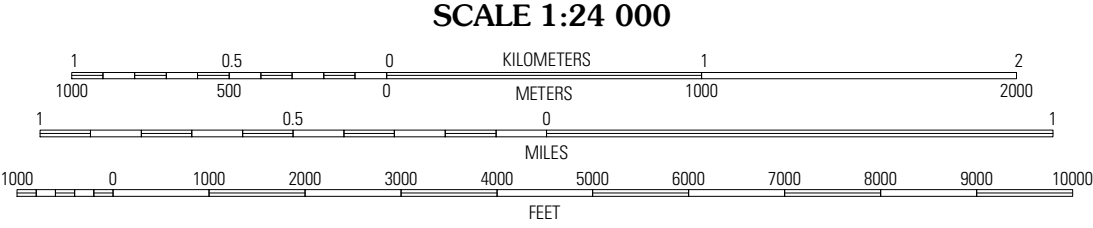


Produced by the United States Geological Survey
North American Datum of 1983 (NAD83)
World Geodetic System of 1984 (WGS84). Projection and
1 000-meter grid: Universal Transverse Mercator, Zone 15R
10 000-foot ticks: Louisiana Coordinate System of 1983
(south zone)

Imagery.....NAIP, September 2007
Roads.....National Transportation Dataset, 2004
Names.....GNIS, 2008

UTM GRID AND 2009 MAGNETIC NORTH
DECLINATION AT CENTER OF SHEET

U.S. National Grid
100,000-m Square ID
WP
Grid Zone Designation
15R



This map was produced to conform with version 0.0.25 of the
draft USGS Standards for 7.5-Minute Quadrangle Maps.
A metadata file associated with this product is also draft version 0.0.25



QUADRANGLE LOCATION		
Indian Village	Kinder	Elton
Fenton	Welsh North	Hathaway
Lacassine	Welsh South	Jennings

ADJOINING 7.5' QUADRANGLES
LA 3092-231

ROAD CLASSIFICATION

Interstate Route
US Route
Ramp

State Route
Local Road
4WD

WELSH NORTH, LA
2009