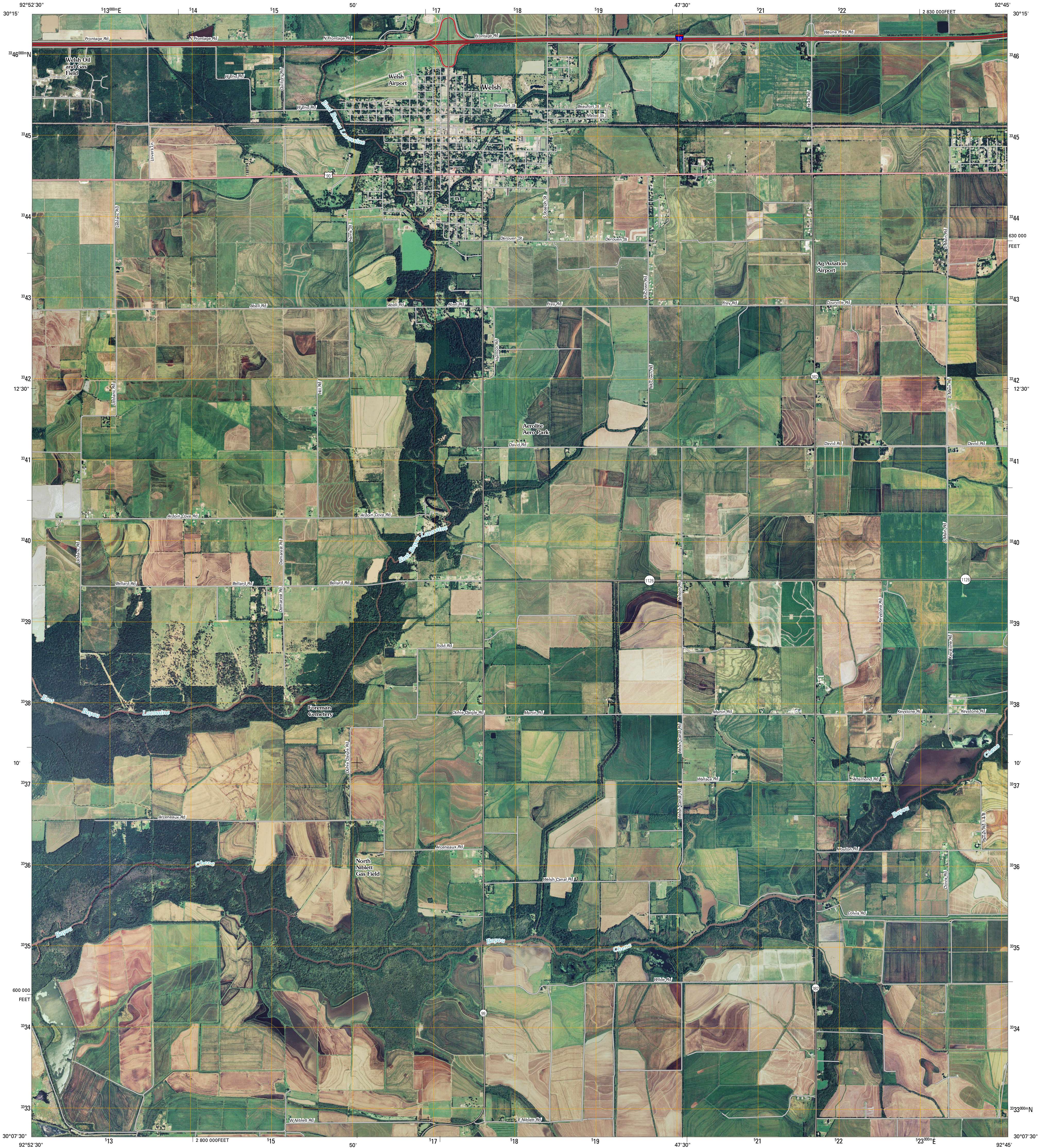




U.S. DEPARTMENT OF THE INTERIOR  
U. S. GEOLOGICAL SURVEY

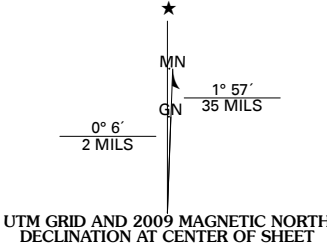


WELSH SOUTH QUADRANGLE  
LOUISIANA  
7.5-MINUTE SERIES

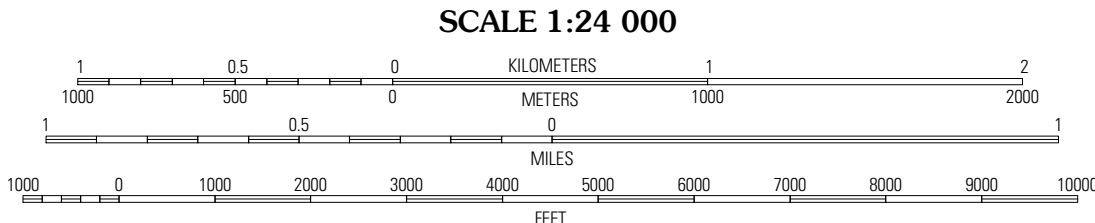


Produced by the United States Geological Survey  
North American Datum of 1983 (NAD83)  
World Geodetic System of 1984 (WGS84). Projection and  
1 000-meter grid: Universal Transverse Mercator, Zone 15R  
10 000-foot ticks: Louisiana Coordinate System of 1983  
(south zone)

Imagery.....NAIP, September 2007  
Roads.....National Transportation Dataset, 2004  
Names.....GNIS, 2008



U.S. National Grid
100,000m Square ID
WP
Grid Zone Designation
15R

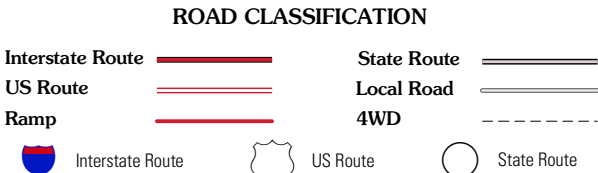


This map was produced to conform with version 0.0.25 of the  
draft USGS Standards for 7.5-Minute Quadrangle Maps.  
A metadata file associated with this product is also draft version 0.0.25



Fenton	Welsh North	Hathaway
Lacassine	Welsh South	Jennings
Hayes	Thornwell	Lake Arthur

ADJOINING 7.5' QUADRANGLES  
LA 3092-224



WELSH SOUTH, LA  
2009