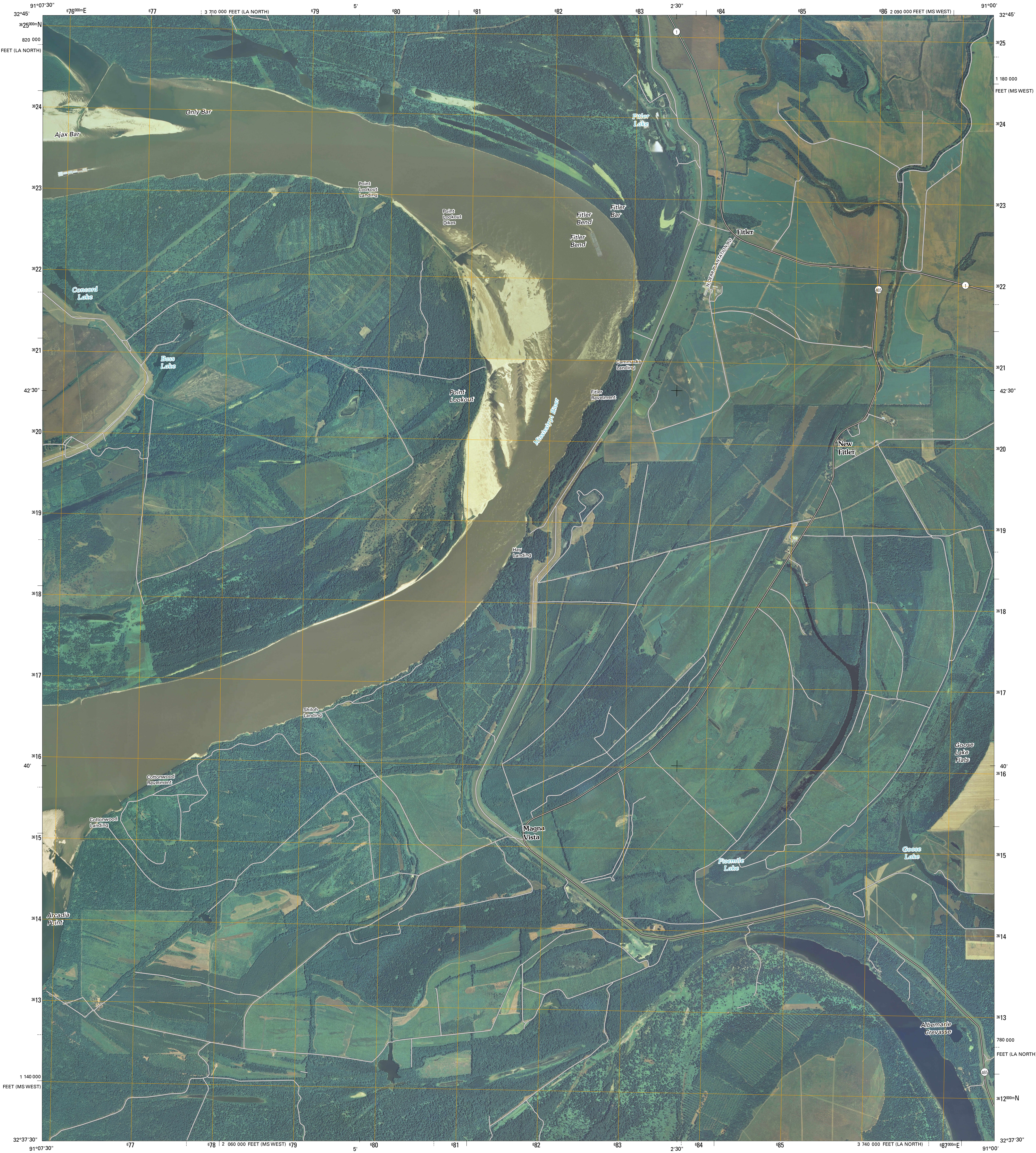




U.S. DEPARTMENT OF THE INTERIOR
U. S. GEOLOGICAL SURVEY



FITLER QUADRANGLE
MISSISSIPPI-LOUISIANA
7.5-MINUTE SERIES

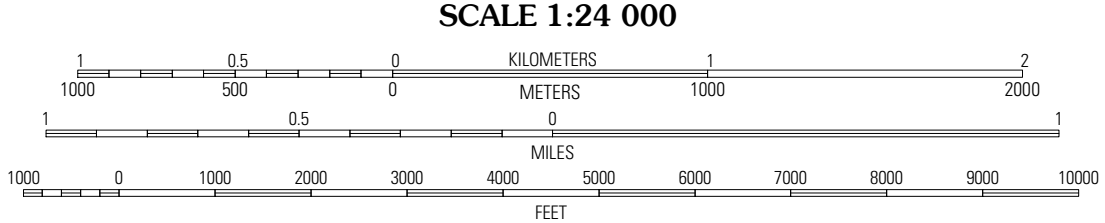


Produced by the United States Geological Survey
North American Datum of 1983 (NAD83)
World Geodetic System of 1984 (WGS84). Projection and
1 000-meter grid: Universal Transverse Mercator, Zone 15S
10 000-foot ticks: Mississippi Coordinate System of 1983
(west zone) and Louisiana Coordinate System of 1983
(north zone)

Imagery.....NAIP, August 2007
Roads.....National Transportation Dataset, 2004 - 2005
Names.....GNIS, 2008

UTM GRID AND 2009 MAGNETIC NORTH
DECLINATION AT CENTER OF SHEET

U.S. National Grid 100,000-m Square ID
XS
Grid Zone Designation 15S



This map was produced to conform with version 0.0.25 of the
draft USGS Standards for 7.5-Minute Quadrangle Maps.
A metadata file associated with this product is also draft version 0.0.25

QUADRANGLE LOCATION		
Lake Providence	Whiting Bayou	Cary
Transylvania	Fitler	Onward
Sandheimer	Eagle Bend	Cane Bayou

ADJOINING 7.5 QUADRANGLES

ROAD CLASSIFICATION

Interstate Route	State Route
US Route	Local Road
Ramp	4WD

Interstate Route US Route State Route

FITLER, MS-LA
2009