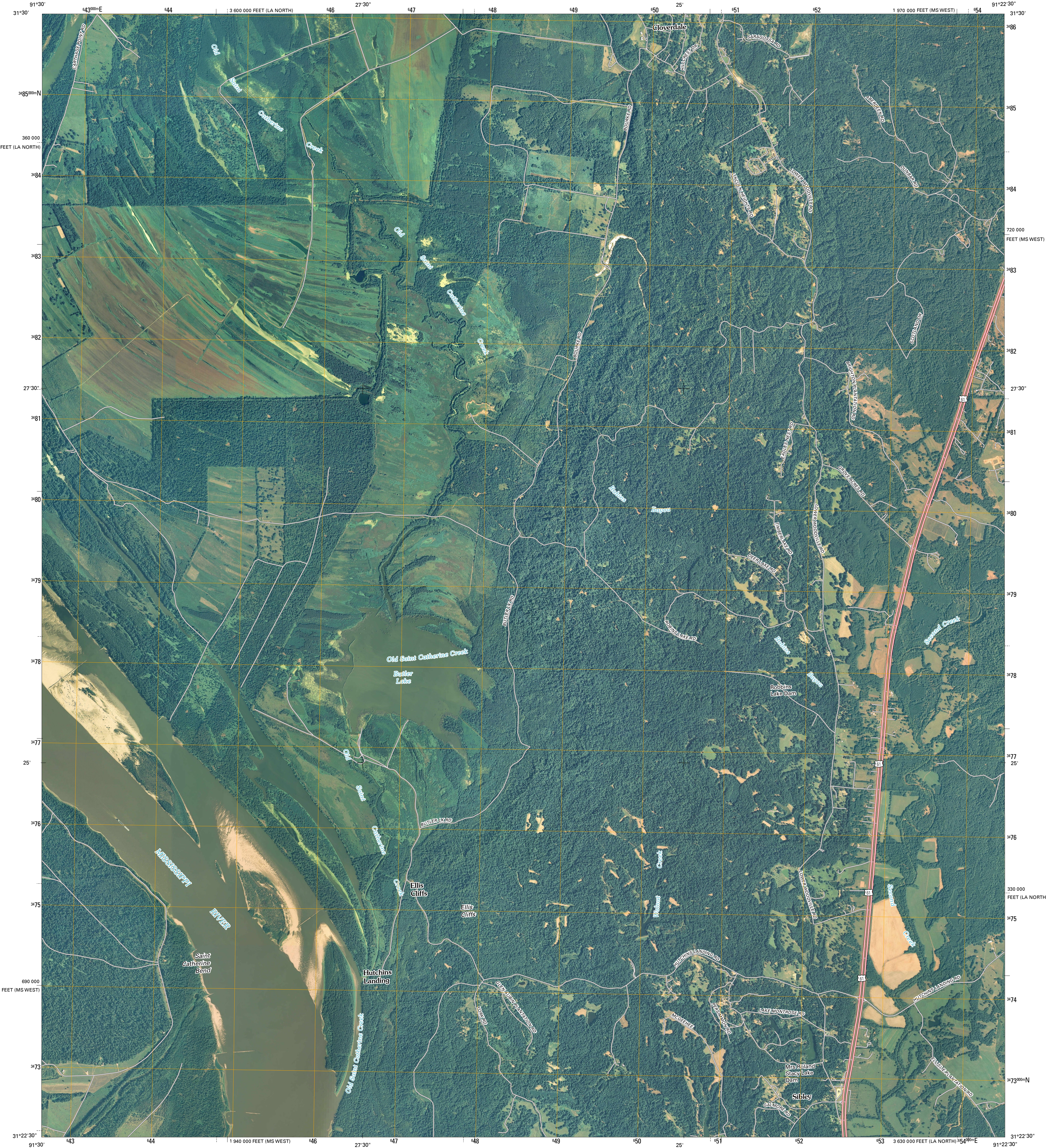




U.S. DEPARTMENT OF THE INTERIOR
U. S. GEOLOGICAL SURVEY

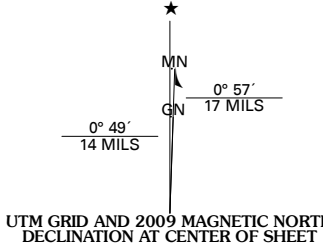


SIBLEY QUADRANGLE
MISSISSIPPI-LOUISIANA
7.5-MINUTE SERIES

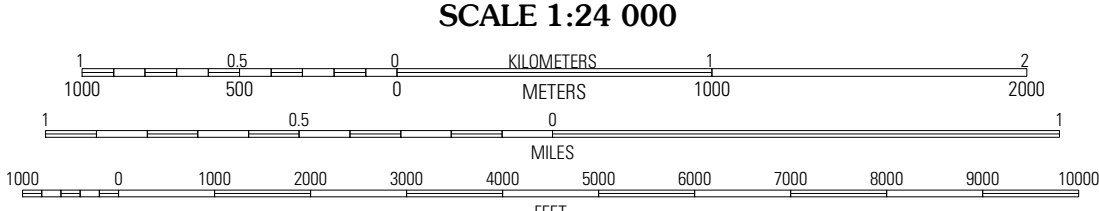


Produced by the United States Geological Survey
North American Datum of 1983 (NAD83)
World Geodetic System of 1984 (WGS84). Projection and
1 000-meter grid: Universal Transverse Mercator, Zone 15R
10 000-foot ticks: Mississippi Coordinate System of 1983
(west zone)
and Louisiana Coordinate System of 1983
(north zone)

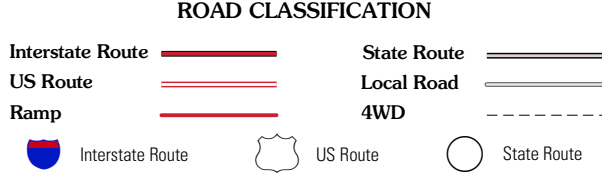
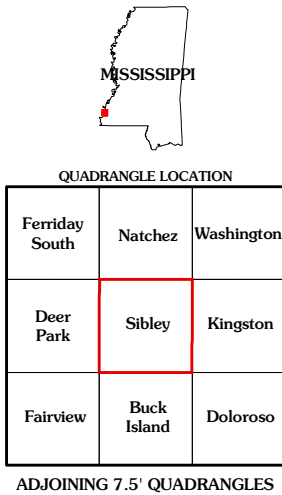
Imagery.....NAIP, August 2007
Roads.....National Transportation Dataset, 2004 - 2008
Names.....GNIS, 2008



| U.S. National Grid |
|-----------------------|
| 100,000-m Square ID |
| X0 |
| Grid Zone Designation |
| 15R |



This map was produced to conform with version 0.0.25 of the
draft USGS Standards for 7.5-Minute Quadrangle Maps.
A metadata file associated with this product is also draft version 0.0.25



SIBLEY, MS-LA
2009