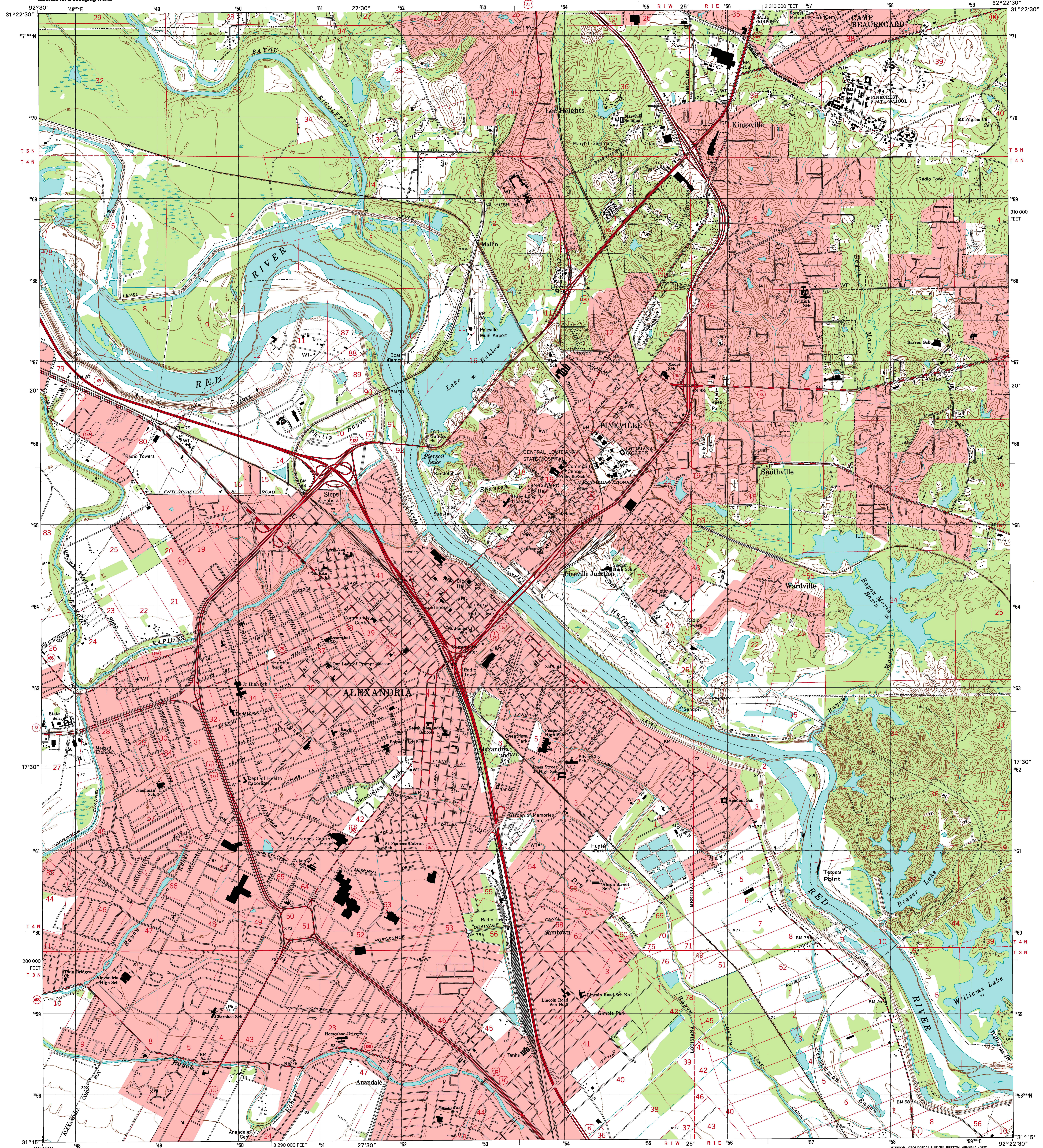


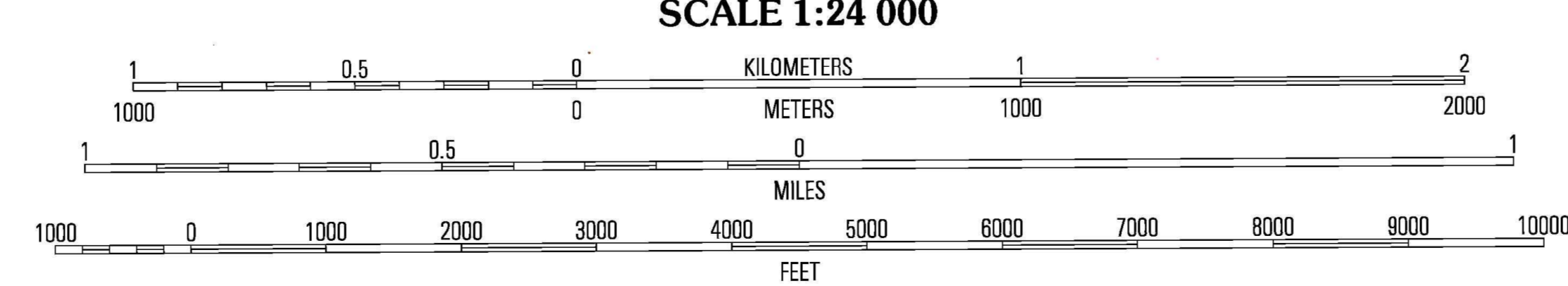
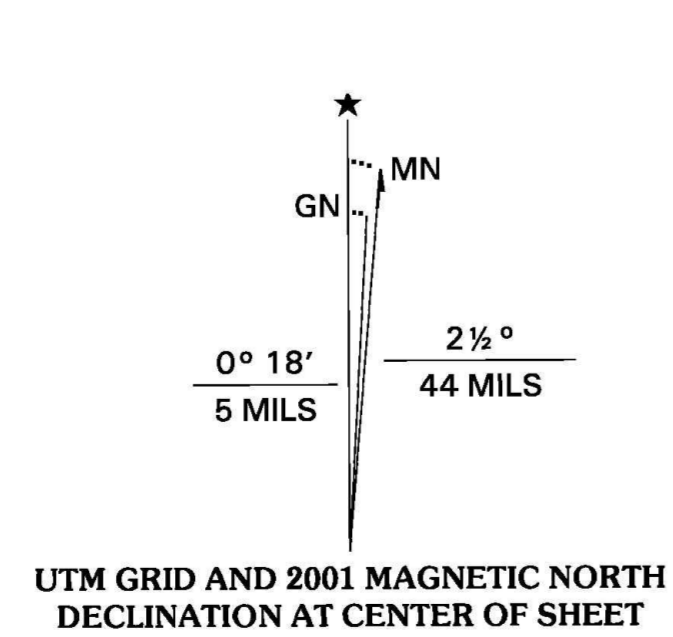


U.S. DEPARTMENT OF THE INTERIOR  
U.S. GEOLOGICAL SURVEY

ALEXANDRIA QUADRANGLE  
LOUISIANA-RAPIDES PARISH  
7.5-MINUTE SERIES (TOPOGRAPHIC)



Produced by the United States Geological Survey  
Topography compiled 1955. Planimetry derived from imagery taken 1998 and other sources. Public Land Survey System and survey control current as of 1972.  
North American Datum of 1983 (NAD 83). Projection and 1 000-meter grid: Universal Transverse Mercator, zone 15 10 000-foot ticks: Louisiana Coordinate System of 1983 (north zone)  
North American Datum of 1927 (NAD 27) is shown by dashed corner ticks. The values of the shift between NAD 83 and NAD 27 for 7.5-minute intersections are obtainable from National Geographic Survey NADCON software.  
There may be private inholdings within the boundaries of the National or State reservations shown on this map.  
Landmark buildings verified 1972.



CONTOUR INTERVAL 10 FEET  
DOTTED LINES REPRESENT 5-FOOT CONTOURS  
NATIONAL GEODETIC DATUM OF 1929  
TO CONVERT FROM FEET TO METERS, MULTIPLY BY 0.3048



ROAD CLASSIFICATION

Primary highway	Light-duty road, hard or improved surface
Secondary highway	Unimproved road
Interstate	U.S. Route
	State Route

1	2	3	1 Rock Hill
4	5	6	2 Ball
7	8	9	3 Green Gables
			4 Rapids
			5 Libuse
			6 Woodworth West
			7 Woodworth East
			8 Lataner

ADJOINING 7.5' QUADRANGLE NAMES  
LA 98C

ALEXANDRIA, LA  
1998  
NIMA 7546 IV SW-SERIES V885

