

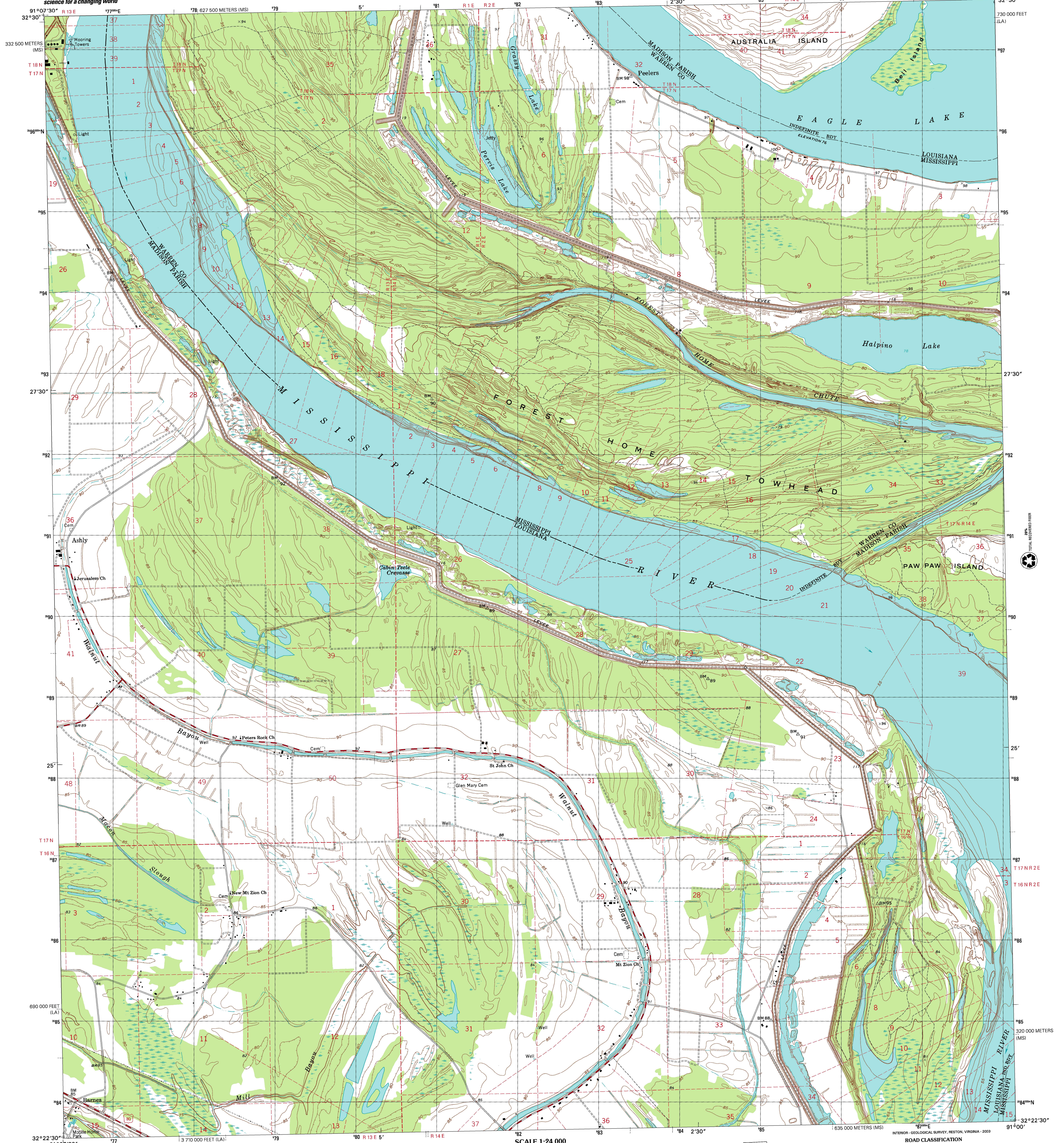


U.S. DEPARTMENT OF THE INTERIOR  
U.S. GEOLOGICAL SURVEY

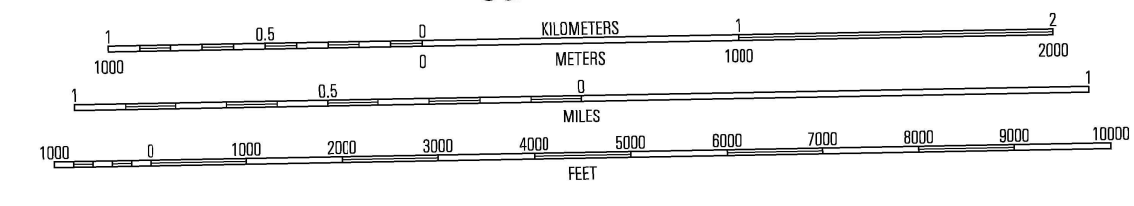
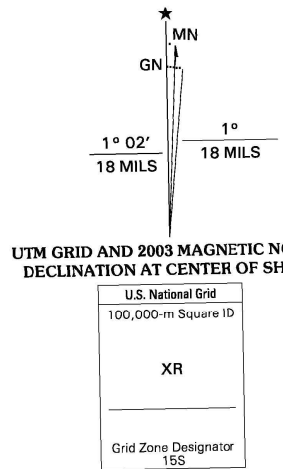


STATE OF LOUISIANA  
DEPARTMENT OF TRANSPORTATION AND DEVELOPMENT

ASHLY QUADRANGLE  
LOUISIANA-MISSISSIPPI  
7.5-MINUTE SERIES (TOPOGRAPHIC)

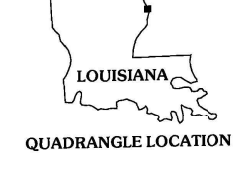


Produced by the United States Geological Survey  
Topography compiled 1963. Planimetry derived from imagery taken 1998 and other sources. Public Land Survey System and survey control current as of 1963. Boundaries current as of 2002.  
North American Datum of 1983 (NAD 83). Projection and 1000-meter grid: Universal Transverse Mercator zone 15S  
10 000-foot ticks: Louisiana Coordinate System of 1983 (north zone)  
2 500-meter ticks: Mississippi Coordinate System of 1983 (west zone)  
North American Datum of 1927 (NAD 27) is shown by dashed corner ticks. The values of the shift between NAD 83 and NAD 27 for 7.5-minute intersections are obtainable from National Geodetic Survey NADCON software.  
Where omitted, land lines have not been established or are not shown because of insufficient data.  
Houses of worship, schools, and other labeled buildings verified 1971



CONTOUR INTERVAL 5 FEET  
NATIONAL GEODETIC VERTICAL DATUM OF 1929  
TO CONVERT FROM FEET TO METERS, MULTIPLY BY 0.3048

THIS MAP COMPLIES WITH NATIONAL MAP ACCURACY STANDARDS  
FOR SALE BY U.S. GEOLOGICAL SURVEY, P.O. BOX 25286, DENVER, COLORADO 80225  
AND LOUISIANA DEPARTMENT OF TRANSPORTATION AND DEVELOPMENT, BATON ROUGE, LOUISIANA 70804  
A FOLDER DESCRIBING TOPOGRAPHIC MAPS AND SYMBOLS IS AVAILABLE ON REQUEST



QUADRANGLE LOCATION

1	2	3	1 Sandheimer
4	5	6	2 Eagle Bend
7	8	9	3 Canal Bayou
			4 Tallulah
			5 Long Lake
			6 Fortuna Park
			7 Mound
			8 Vicksburg West

ADJOINING 7.5' QUADRANGLES  
LA 428

ROAD CLASSIFICATION

Primary highway hard surface	Light-duty road, hard or improved surface
Secondary highway hard surface	Unimproved road
Interstate Route	U.S. Route
	State Route

ASHLY, LA-MS  
1998

NIMA 7748 I NE-SERIES V885



ISBN 0-607-99972-1  
9 780607 999721