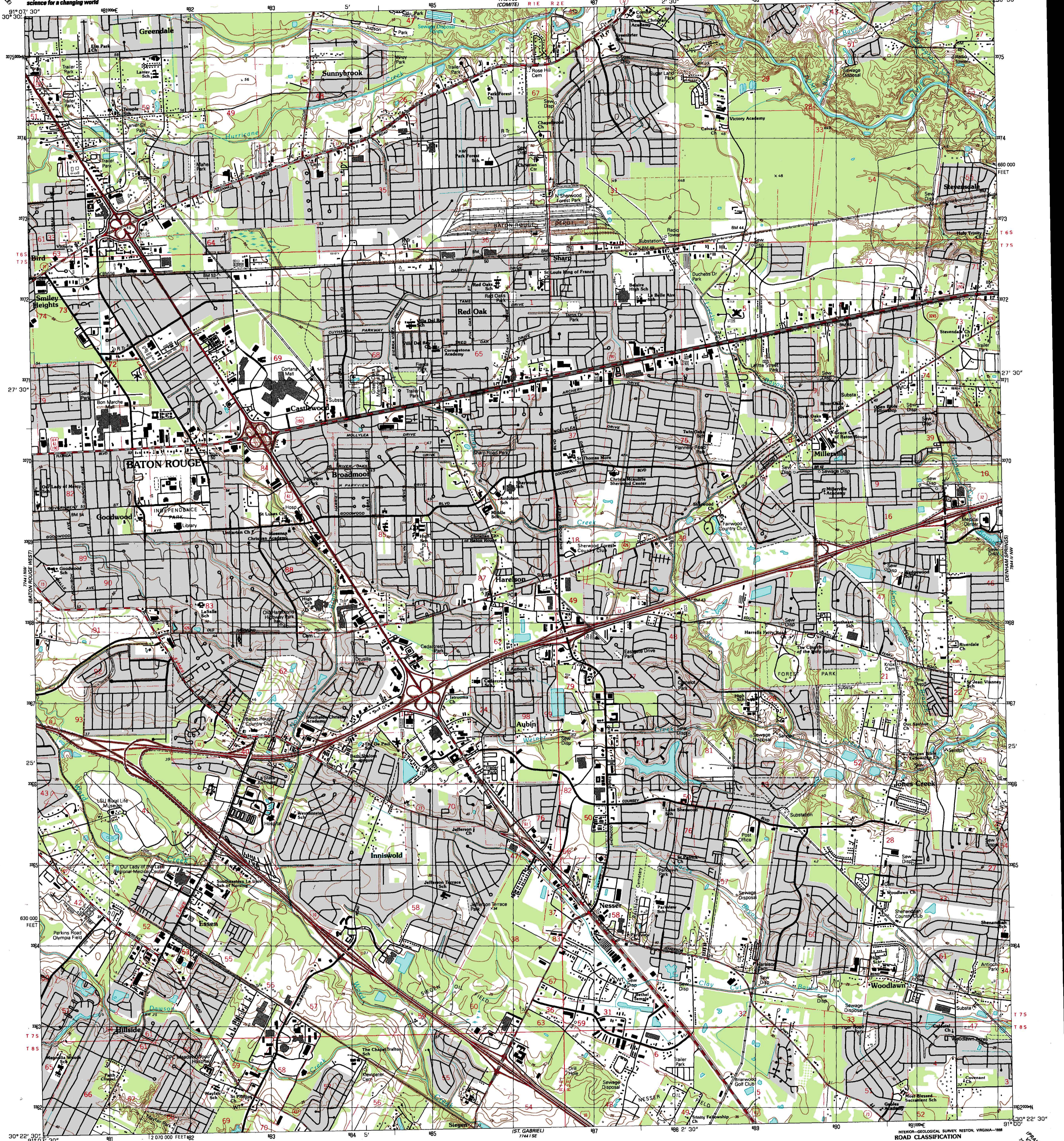


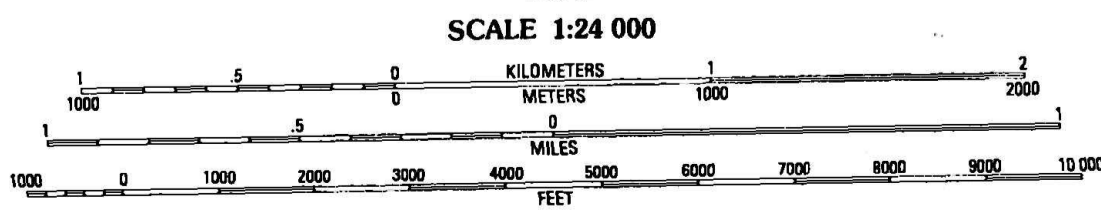
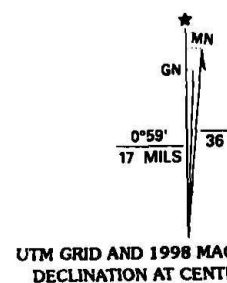


U.S. DEPARTMENT OF THE INTERIOR  
U.S. GEOLOGICAL SURVEY

BATON ROUGE EAST QUADRANGLE  
LOUISIANA—EAST BATON ROUGE PARISH  
7.5 MINUTE SERIES (TOPOGRAPHIC)



Produced by the United States Geological Survey  
Topography compiled 1952. Planimetry derived from imagery taken 1989 and other sources. Photomaps using imagery dated 1995; no major culture or drainage changes observed. PLSS and survey control current as of 1991. Boundaries, other than corporate, verified 1998  
North American Datum of 1927 (NAD 27). Projection and 10 000-foot ticks: Louisiana coordinate system, south zone (Lambert conformal conic)  
1 000-meter Universal Transverse Mercator grid, zone 15  
North American Datum of 1983 (NAD 83) is shown by dashed corner ticks. The values of the shift between NAD 27 and NAD 83 for 7.5-minute intersections are obtainable from National Geodetic Survey NADCON software



CONTOUR INTERVAL 5 FEET  
NATIONAL GEODETIC VERTICAL DATUM OF 1929  
TO CONVERT METERS TO FEET, MULTIPLY BY 3.2808  
THIS MAP COMPLIES WITH NATIONAL MAP ACCURACY STANDARDS  
FOR SALE BY U.S. GEOLOGICAL SURVEY, P.O. BOX 25286, DENVER, COLORADO 80225  
AND LOUISIANA DEPARTMENT OF TRANSPORTATION AND DEVELOPMENT, BATON ROUGE, LOUISIANA 70804  
A FOLDER DESCRIBING TOPOGRAPHIC MAPS AND SYMBOLS IS AVAILABLE ON REQUEST



ROAD CLASSIFICATION  
Primary highway, hard surface .....  
Secondary highway, hard surface .....  
Unimproved road .....  
Interstate Route U.S. Route State Route

BATON ROUGE EAST, LA.

1995

NIMA 7744 1 NE-SERIES V885

