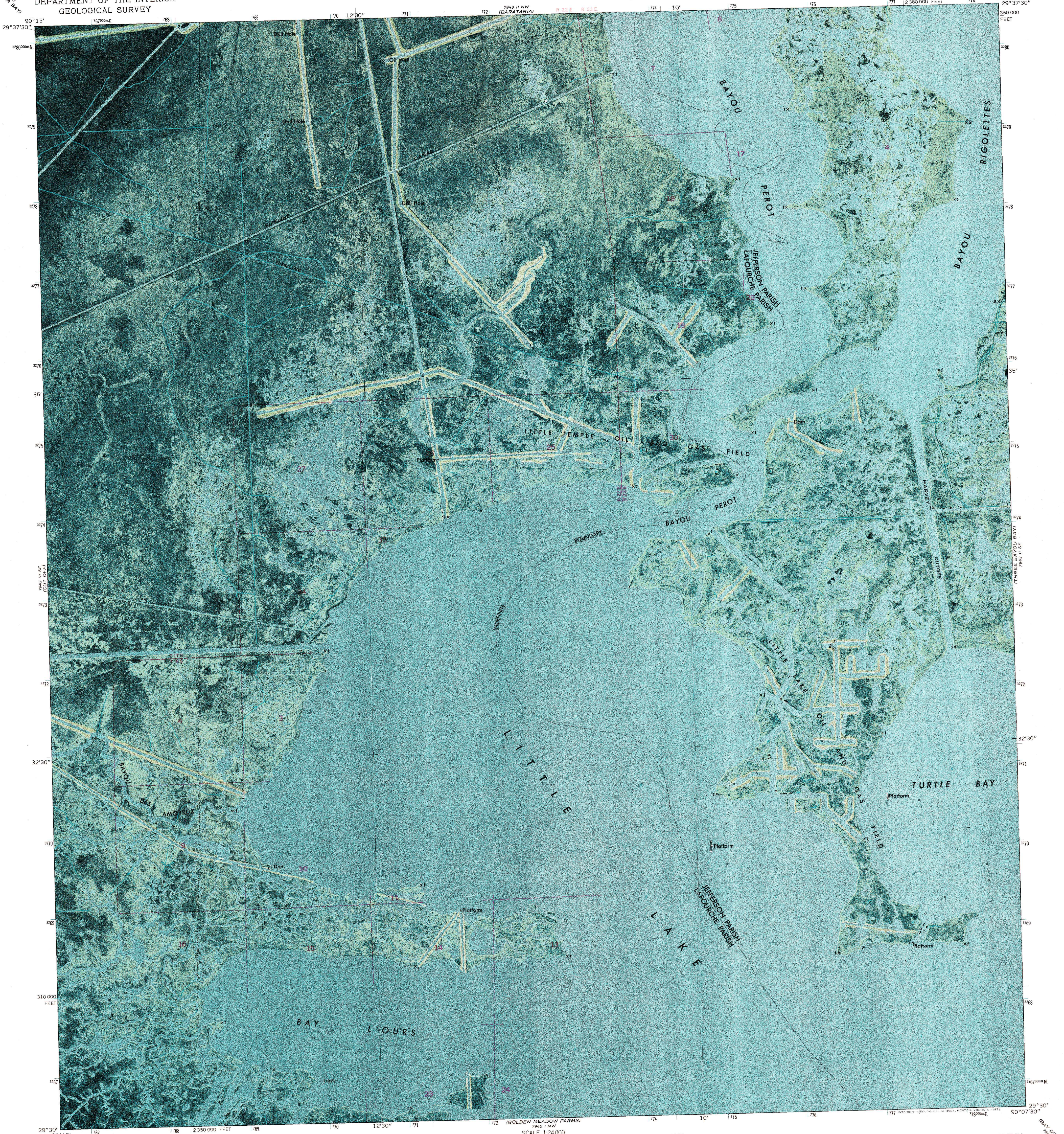
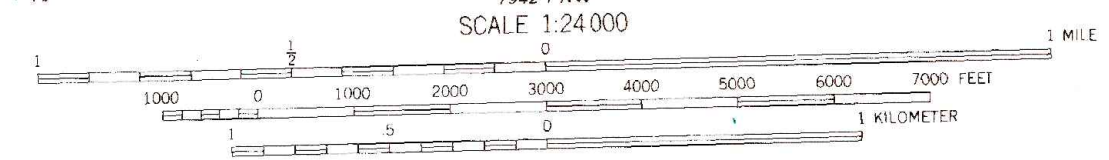
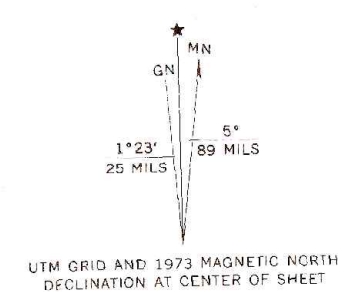


UNITED STATES  
DEPARTMENT OF THE INTERIOR  
GEOLOGICAL SURVEY

BAY L'OURS QUADRANGLE  
LOUISIANA  
7.5 MINUTE SERIES ORTHOPHOTOMAP (TOPOGRAPHIC)  
SW/4 BARATARIA 16 QUADRANGLE



Mapped, edited, and published by the Geological Survey  
Control by USGS and USC&GS  
Orthophotomap prepared from high-altitude aerial photographs  
taken Oct. 11, 1971. Topography by planetable surveys 1973  
Selected hydrographic data compiled from USC&GS Chart 1050 (1971)  
This information is not intended for navigational purposes  
Projection and 10,000-foot grid ticks: Louisiana coordinate  
system, south zone (Lambert conformal conic)  
1000-meter Universal Transverse Mercator grid ticks,  
zone 15, shown in blue. 1927 North American datum  
All or part of this quadrangle lies within a subsidence area  
Where omitted, land lines have not been established or  
are not shown because of insufficient data



THIS MAP COMPLIES WITH NATIONAL MAP ACCURACY STANDARDS  
FOR SALE BY U. S. GEOLOGICAL SURVEY, DENVER, COLORADO 80225, OR RESTON, VIRGINIA 22092  
AND BY THE STATE OF LOUISIANA, DEPARTMENT OF PUBLIC WORKS, BATON ROUGE, LOUISIANA 70804  
A FOLDER DESCRIBING TOPOGRAPHIC MAPS AND SYMBOLS IS AVAILABLE ON REQUEST



ROAD CLASSIFICATION  
No roads or trails in this area

BAY L'OURS, LA.  
SW/4 BARATARIA 16 QUADRANGLE  
N2930—W9007.5/7.5  
1973  
AMS 7943 II SW—SERIES V8850