

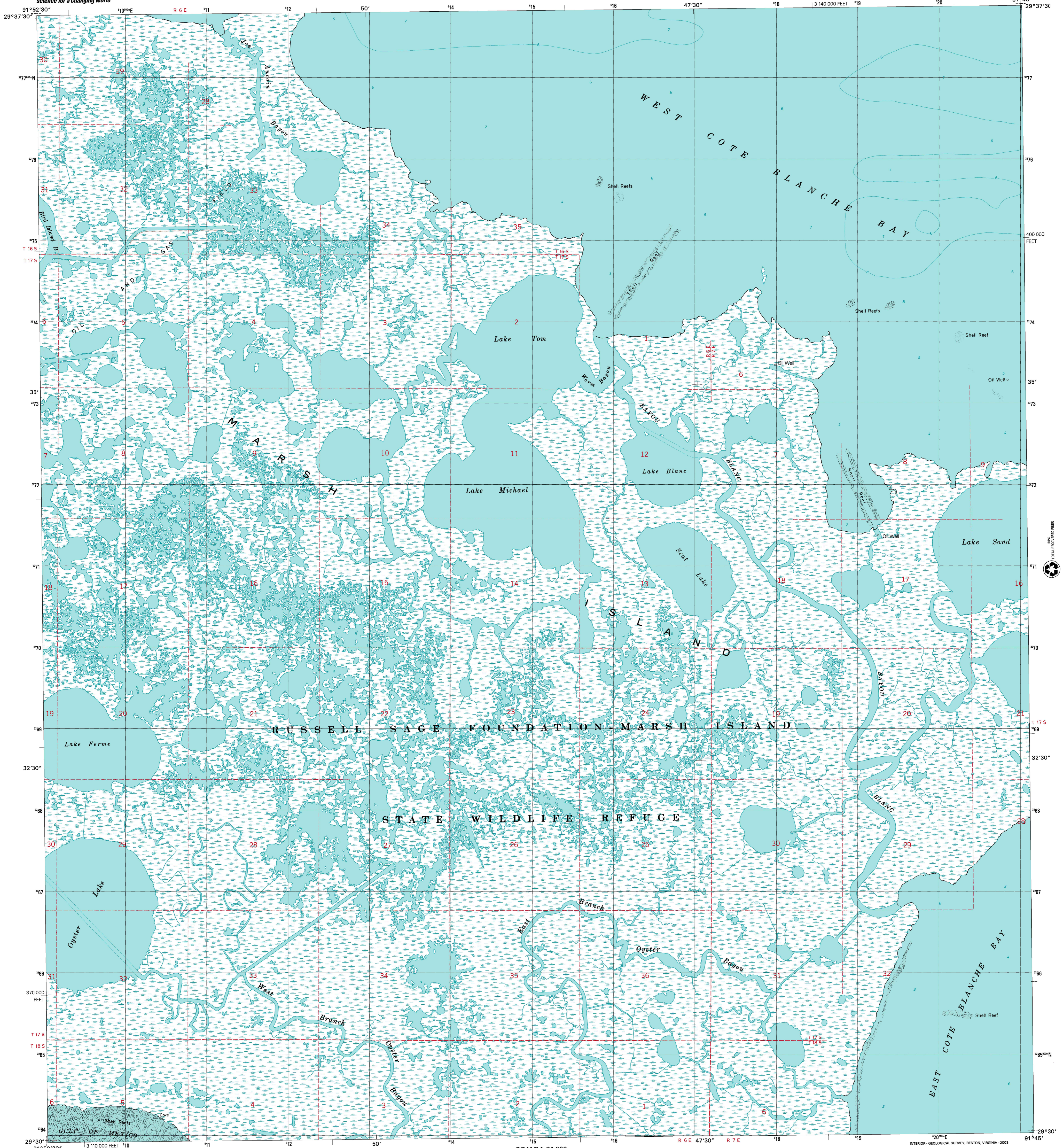


U.S. DEPARTMENT OF THE INTERIOR
U.S. GEOLOGICAL SURVEY

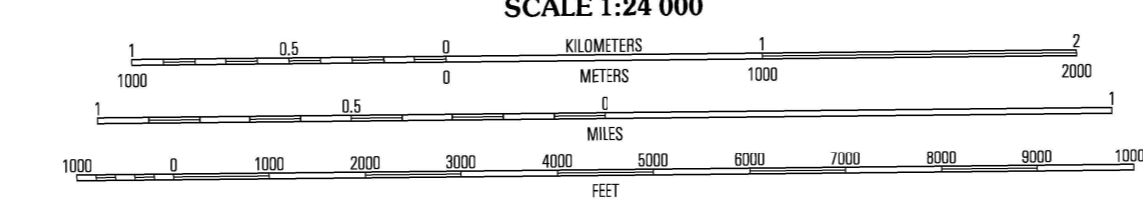
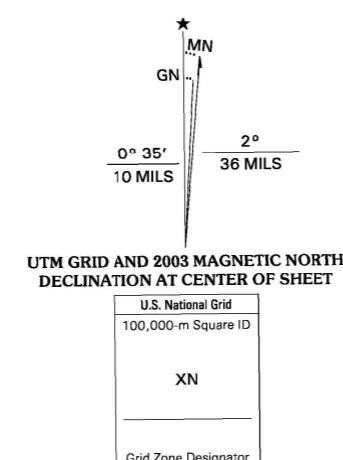


STATE OF LOUISIANA
DEPARTMENT OF TRANSPORTATION AND DEVELOPMENT

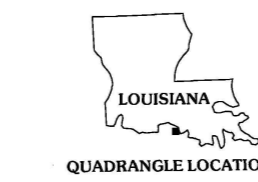
BAYOU BLANC QUADRANGLE
LOUISIANA-IBERIA PARISH
7.5-MINUTE SERIES (TOPOGRAPHIC)



Produced by the United States Geological Survey
Topography compiled 1948. Planimetry derived from imagery taken 1959 and other sources. Public Land Survey System and survey control current as of 1968. Boundaries current as of 2002.
Selected hydrographic data compiled from US&GS Charts 12276 (1967) and 1277 (1966). This information is not intended for navigational purposes.
North American Datum of 1983 (NAD 83). Projection and 1 000-meter grid: Universal Transverse Mercator, zone 15R 10 000-foot ticks; Louisiana Coordinate System of 1983 (south zone).
North American Datum of 1927 (NAD 27) is shown by dashed corner ticks. The values of the shift between NAD 83 and NAD 27 for 7.5-minute increments are obtainable from National Geodetic Survey NADCON software.
There may be private inholdings within the boundaries of the National or State reservations shown on this map.
Houses of worship, schools, and other labeled buildings verified 1968.
This quadrangle covers a subsidence area.



ALL ELEVATIONS BETWEEN ZERO AND 5 FEET ABOVE DATUM
NATIONAL GEODETIC VERTICAL DATUM OF 1929
DEPTH CURVES AND SOUNDING IN FEET - DATUM IS MEAN LOWER LOW WATER
THE RELATIONSHIP BETWEEN THE TWO DATUMS IS VARIABLE
THE MEAN RANGE OF TIDE IS APPROXIMATELY 1 FOOT
TO CONVERT FROM FEET TO METERS, MULTIPLY BY 0.3048
THIS MAP COMPLIES WITH NATIONAL MAP ACCURACY STANDARDS
FOR SALE BY U.S. GEOLOGICAL SURVEY, P.O. BOX 25286, DENVER, COLORADO 80225
AND LOUISIANA DEPARTMENT OF TRANSPORTATION AND DEVELOPMENT, BATON ROUGE, LOUISIANA 70804
A FOLDER DESCRIBING TOPOGRAPHIC MAPS AND SYMBOLS IS AVAILABLE ON REQUEST



QUADRANGLE LOCATION

1	2	3
4	5	6
6	7	8

1 Cypressport Point
2 Hammond Lake
3 Marone Point
4 Bayou Lachin
5 Lake Point
6
7 Meand Point
8

ROAD CLASSIFICATION
Primary highway hard surface Light-duty road, hard or improved surface
Secondary highway hard surface Unimproved road
Interstate Route U.S. Route State Route

BAYOU BLANC, LA
1999
NIMA 7643 III SE-SERIES V885

