

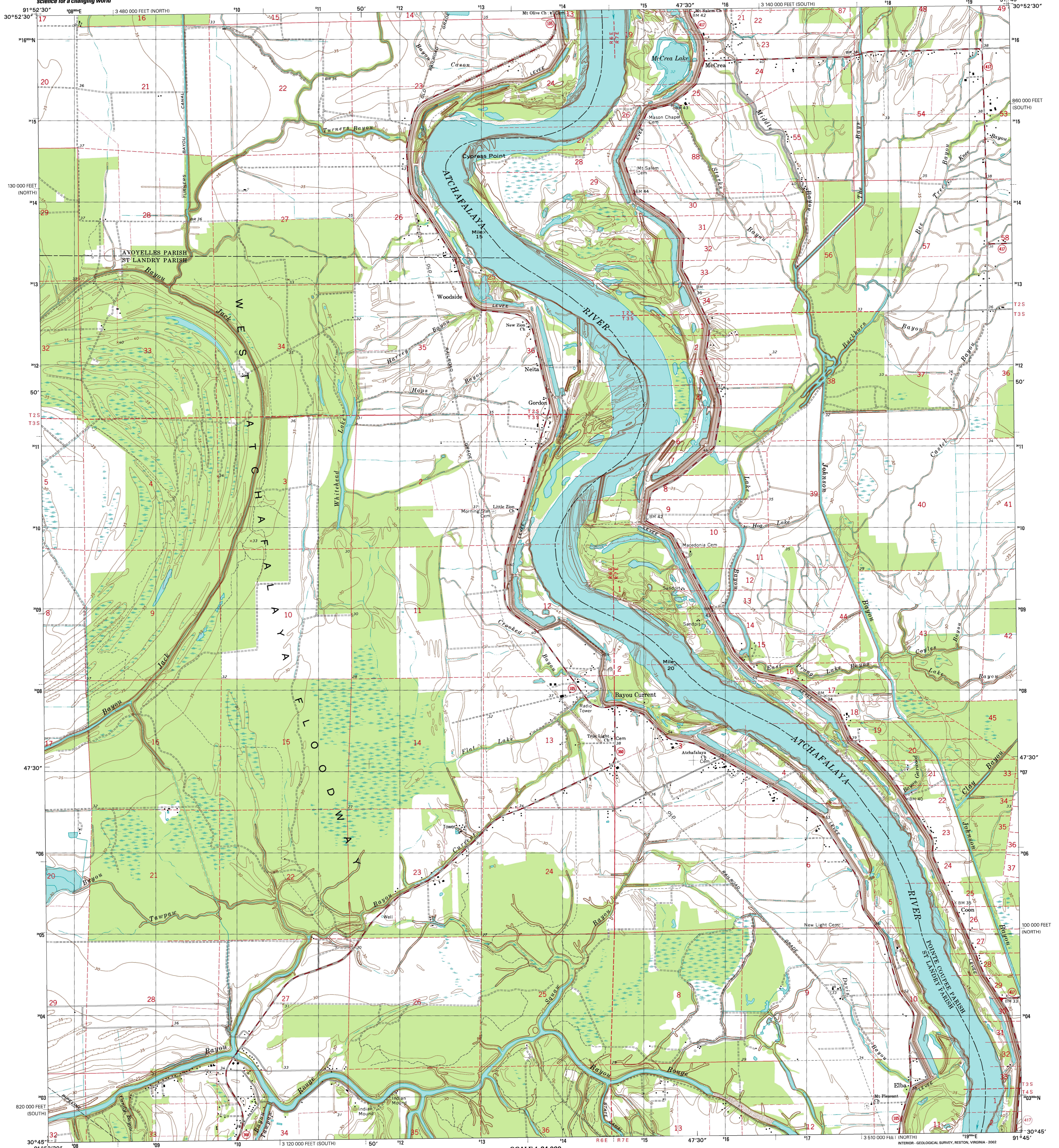


U.S. DEPARTMENT OF THE INTERIOR  
U.S. GEOLOGICAL SURVEY

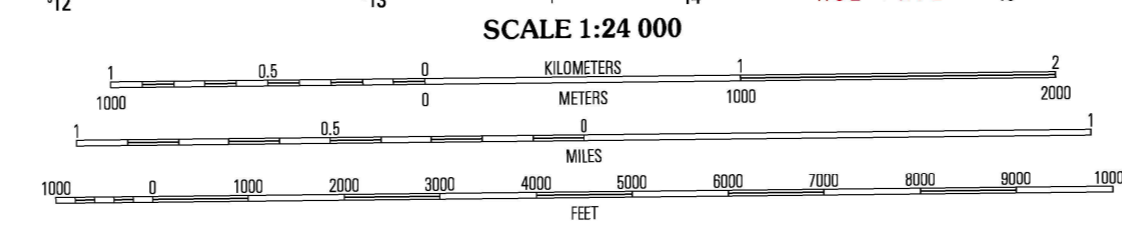
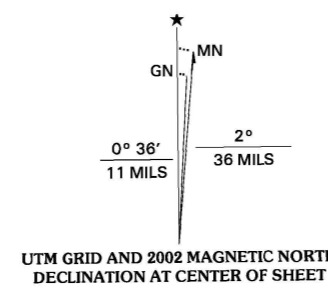


STATE OF LOUISIANA  
DEPARTMENT OF TRANSPORTATION AND DEVELOPMENT

BAYOU CURRENT QUADRANGLE  
LOUISIANA  
7.5-MINUTE SERIES (TOPOGRAPHIC)



Produced by the United States Geological Survey in cooperation with Louisiana Department of Transportation and Development  
Topography compiled 1969. Planimetry derived from imagery taken 1958 and other sources. Public Land Survey System and survey control current as of 1969. Boundaries current as of 2002  
North American Datum of 1983 (NAD 83). Projection and 1 000-meter grid: Universal Transverse Mercator, zone 15  
10 000-foot ticks: Louisiana Coordinate System of 1983 (south and north zones)  
North American Datum of 1927 (NAD 27) is shown by dashed corner ticks. The values of the shift between NAD 83 and NAD 27 for 7.5-minute intersections are obtainable from National Geodetic Survey NADCON software  
Houses of worship, schools, and other labeled buildings verified 1969



CONTOUR INTERVAL 5 FEET  
NATIONAL GEODETIC VERTICAL DATUM OF 1929  
TO CONVERT FROM FEET TO METERS, MULTIPLY BY 0.3048



QUADRANGLE LOCATION

|   |   |   |               |
|---|---|---|---------------|
| 1 | 2 | 3 | 1 Plaquemine  |
|   |   |   | 2 Simonsport  |
|   |   |   | 3 Inis        |
| 4 | 5 | 6 | 4 Bayou Jack  |
|   |   |   | 5 Bayou de la |
|   |   |   | 6 Palmetto    |
|   |   |   | 7 Sunset Lake |
| 6 | 7 | 8 | 8 Melville    |

ADJOINING 7.5 QUADRANGLES  
LA 131D

**ROAD CLASSIFICATION**

Primary highway hard surface ..... Light-duty road, hard or improved surface .....

Secondary highway hard surface ..... Unimproved road .....

Interstate Route U.S. Route State Route

THIS MAP COMPLIES WITH NATIONAL MAP ACCURACY STANDARDS  
FOR SALE BY U.S. GEOLOGICAL SURVEY, P.O. BOX 25286, DENVER, COLORADO 80225  
AND LOUISIANA DEPARTMENT OF TRANSPORTATION AND DEVELOPMENT, BATON ROUGE, LOUISIANA 70804  
A FOLDER DESCRIBING TOPOGRAPHIC MAPS AND SYMBOLS IS AVAILABLE ON REQUEST

**BAYOU CURRENT, LA**  
1998  
NIMA 7645 IV SE-SERIES V885



ISBN 0-607-47462-7