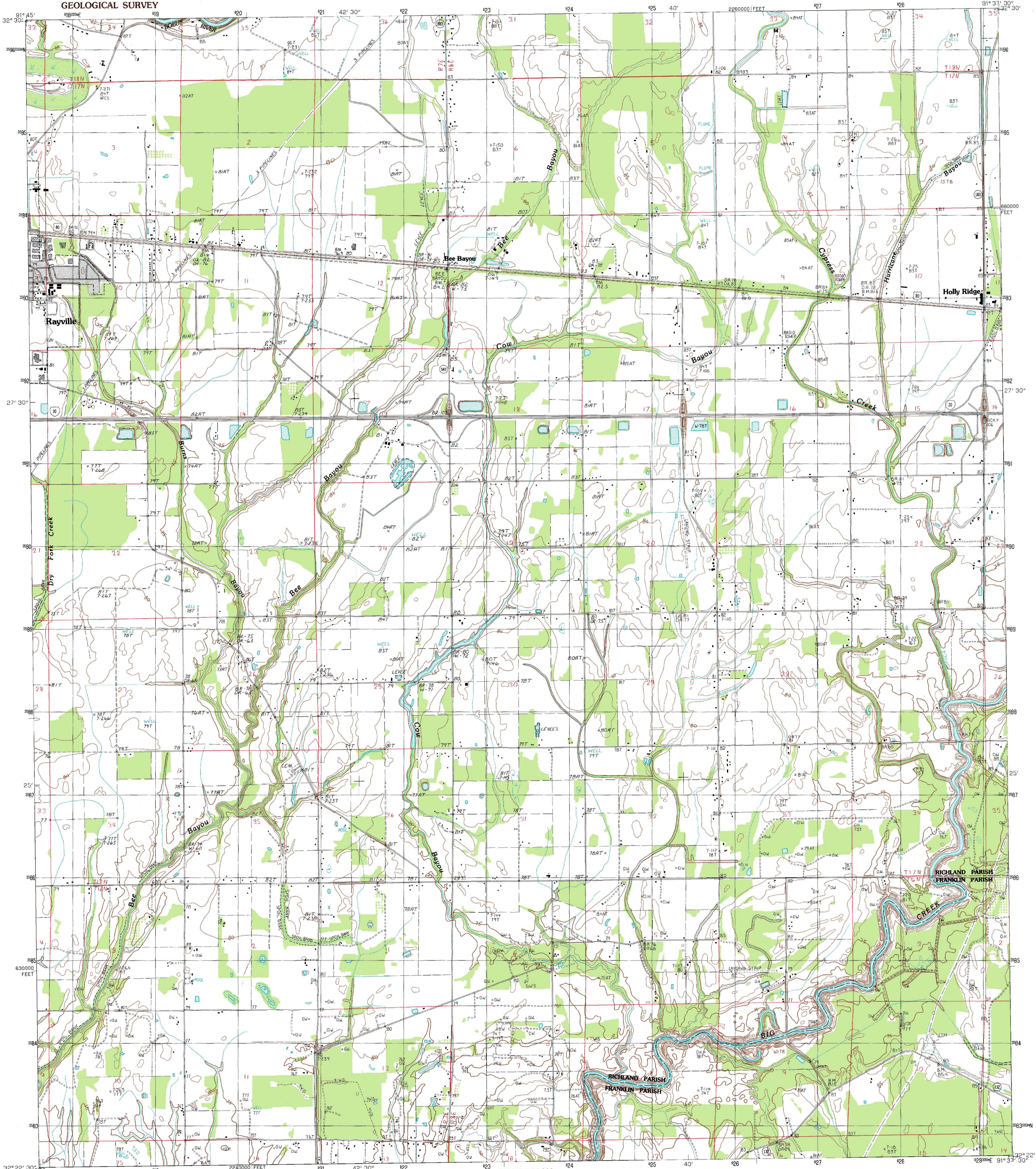
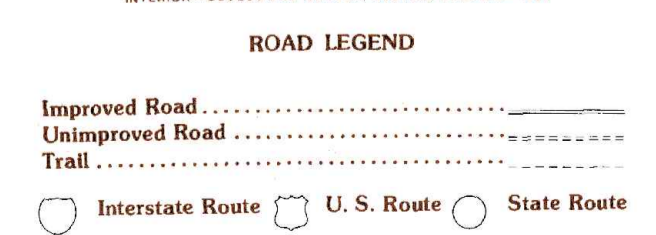
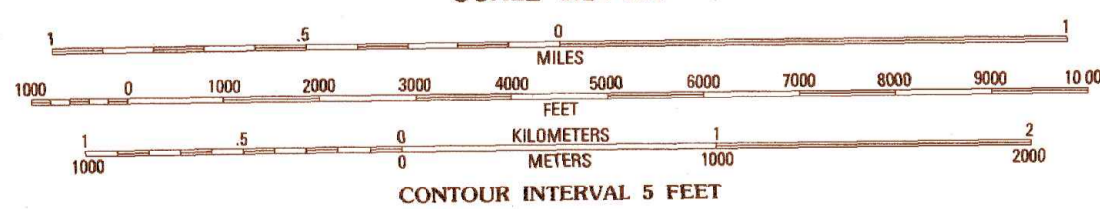


UNITED STATES
DEPARTMENT OF THE INTERIOR
GEOLOGICAL SURVEY

BEE BAYOU QUADRANGLE
LOUISIANA
7.5 MINUTE SERIES (TOPOGRAPHIC)



SCALE 1:24 000



1	2	3
4	5	6
7	8	

ADJOINING 7.5' QUADRANGLE NAMES

PROVISIONAL MAP
Produced from original manuscript drawings. Information shown as of date of photography.

THIS MAP COMPLIES WITH NATIONAL MAP ACCURACY STANDARDS FOR SALE BY U. S. GEOLOGICAL SURVEY, DENVER, COLORADO 80225, OR RESTON, VIRGINIA 22092 AND LOUISIANA DEPARTMENT OF PUBLIC WORKS, BATON ROUGE, LOUISIANA 70804

BEE BAYOU, LOUISIANA
NW4 BASKINTON 15' QUADRANGLE
PROVISIONAL EDITION 1987

32091-D6-TF-024

PRODUCED BY THE UNITED STATES GEOLOGICAL SURVEY CONTROL BY USGS AND NOS/NOAA COMPILED FROM AERIAL PHOTOGRAPHS TAKEN 1982 FIELD CHECKED 1986 MAP EDITED 1987 PROJECTION LAMBERT CONFORMAL CONIC GRID: 1000-METER UNIVERSAL TRANSVERSE MERCATOR ZONE 15 1000000-FOOT STATE GRID TICKS LOUISIANA NORTH ZONE UTM GRID DECLINATION 0°42' EAST 1987 MAGNETIC NORTH DECLINATION 3°00' EAST VERTICAL DATUM NATIONAL GEODESIC VERTICAL DATUM OF 1959 HORIZONTAL DATUM 1927 NORTH AMERICAN DATUM To place on the predicted North American Datum of 1983, move the projection lines as shown by dashed corner ticks (13 meters south and 12 meters east) No distinction made between houses, barns, and other buildings Gray tint indicates area in which selected buildings are shown