



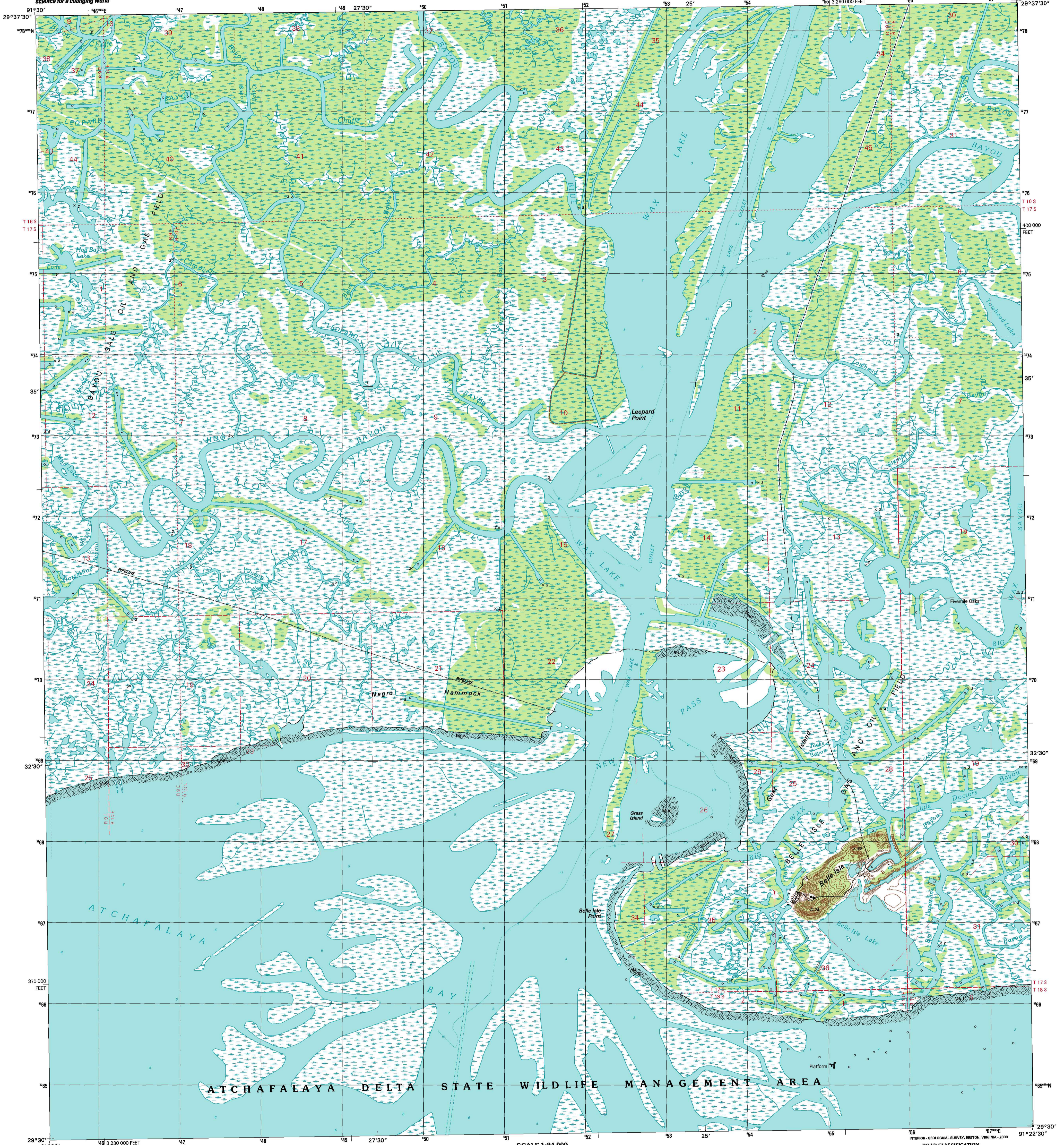
U.S. DEPARTMENT OF THE INTERIOR
U.S. GEOLOGICAL SURVEY



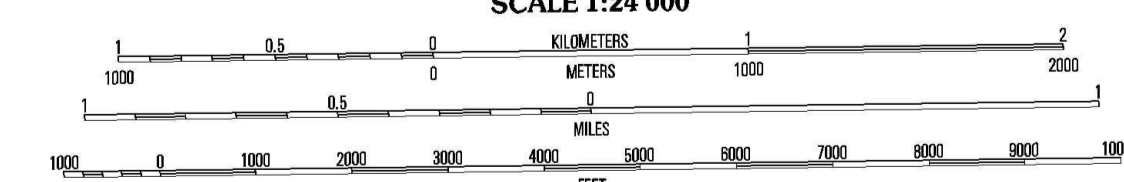
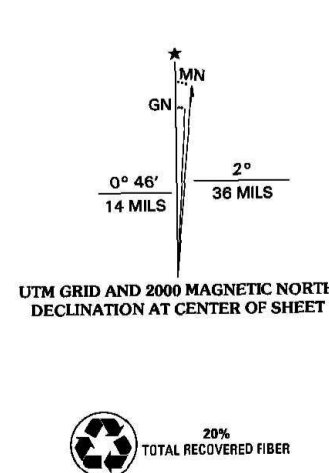
STATE OF LOUISIANA
DEPARTMENT OF TRANSPORTATION AND DEVELOPMENT

BELLE ISLE QUADRANGLE
LOUISIANA-ST. MARY PARISH
7.5-MINUTE SERIES (TOPOGRAPHIC)

Monte Stiel



Produced by the United States Geological Survey in cooperation with Louisiana Department of Transportation and Development
Topography compiled 1966. Planimetry derived from imagery taken 1998 and other sources. Public Land Survey System and survey control current as of 1966.
Selected hydrographic data compiled from NOS Chart 1276 (1965). This information is not intended for navigational purposes.
North American Datum of 1983 (NAD 83). Projection and 1 000-meter grid: Universal Transverse Mercator, zone 15 10 000-foot ticks: Louisiana Coordinate System of 1983 (south zone)
North American Datum of 1927 (NAD 27) is shown by dashed corner ticks. The values of the shift between NAD 83 and NAD 27 for 7.5-minute intersections are obtainable from National Geodetic Survey NADCON software.
There may be private holdings within the boundaries of the National or State reservations shown on this map.
This quadrangle covers a subsidence area.
Landmark buildings verified 1966.



CONTOUR INTERVAL 5 FEET
NATIONAL GEODETIC VERTICAL DATUM OF 1929
TO CONVERT FROM FEET TO METERS, MULTIPLY BY 0.3048
DEPTH CURVES AND SOUNDINGS IN FEET - DATUM IS MEAN LOWER LOW WATER
THE RELATIONSHIP BETWEEN THE TWO DATUMS IS VARIABLE
THE MEAN RANGE OF TIDE IS APPROXIMATELY 1 FOOT

THIS MAP COMPLIES WITH NATIONAL MAP ACCURACY STANDARDS
FOR SALE BY U.S. GEOLOGICAL SURVEY, P.O. BOX 25286, DENVER, COLORADO 80225
AND LOUISIANA DEPARTMENT OF TRANSPORTATION AND DEVELOPMENT, BATON ROUGE, LOUISIANA 70804
A FOLDER DESCRIBING TOPOGRAPHIC MAPS AND SYMBOLS IS AVAILABLE ON REQUEST



ROAD CLASSIFICATION

Primary highway hard surface
Secondary highway hard surface
Light-duty road, hard or improved surface
Unimproved road

Interstate Route U.S. Route State Route

1	2	3	1 Ellerbe
2	3	4	2 North Bend
3	4	5	3 Patterson
4	5	6	4 Pine Clawswell
5	6	7	5 Lake Salve
6	7	8	6
7	8		7
8			8 Point au Fer NE

ADJOINING 7.5 QUADRANGLE NAMES
LA 228C

BELLE ISLE, LA
1998
NIMA 7745 III SW-SERIES V885

