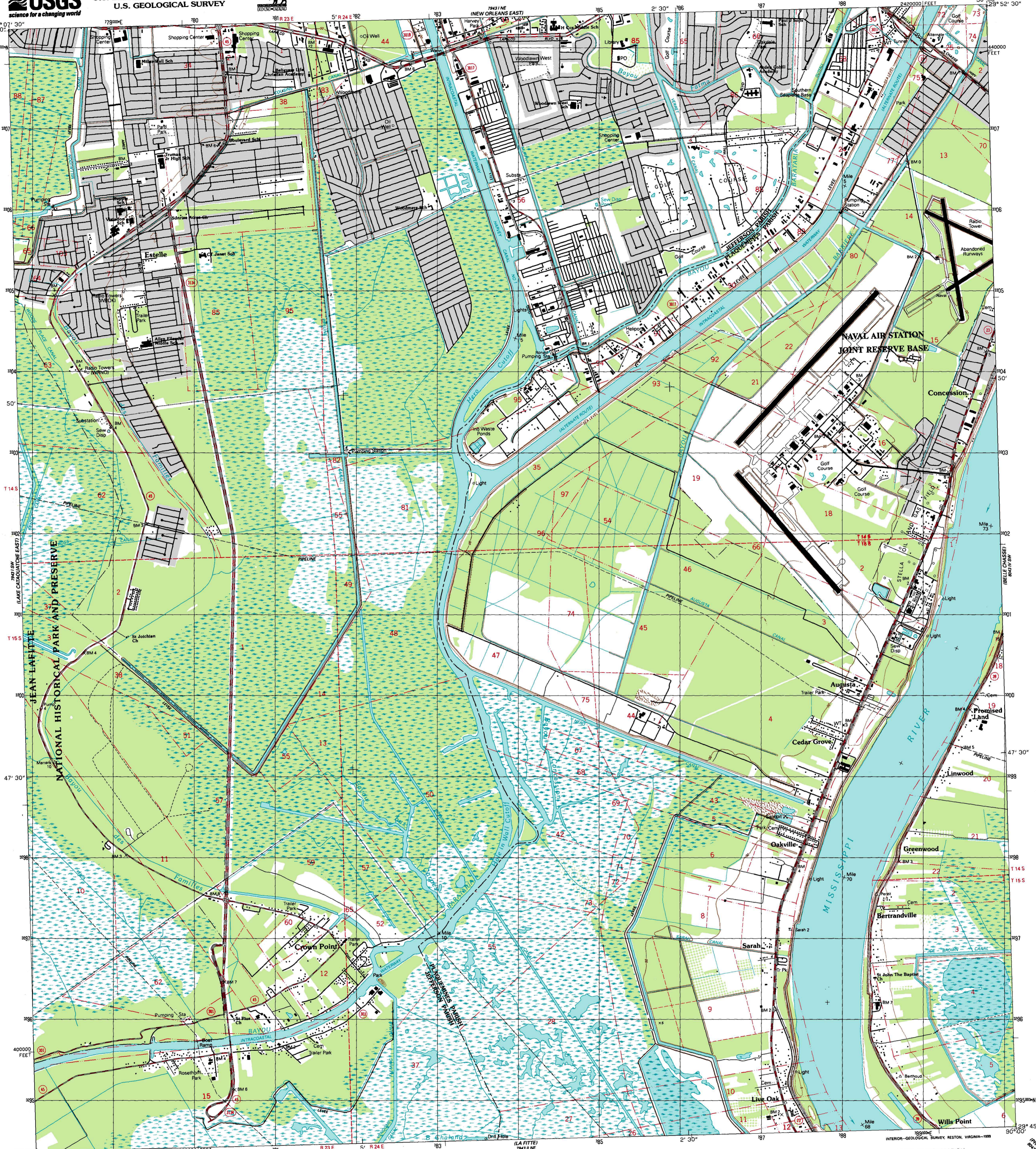




U.S. DEPARTMENT OF THE INTERIOR
U.S. GEOLOGICAL SURVEY



BERTRANDVILLE QUADRANGLE
LOUISIANA
7.5 MINUTE SERIES (TOPOGRAPHIC)
SE/4 NEW ORLEANS 15' QUADRANGLE

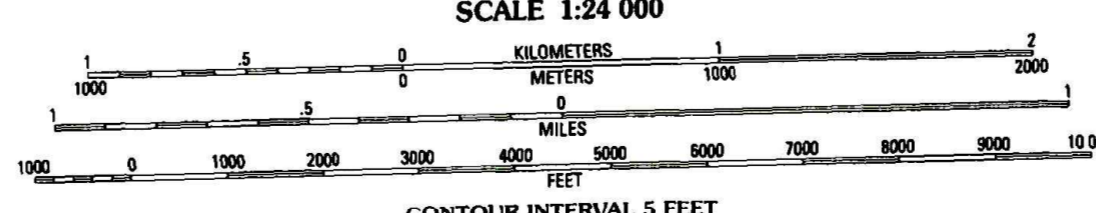
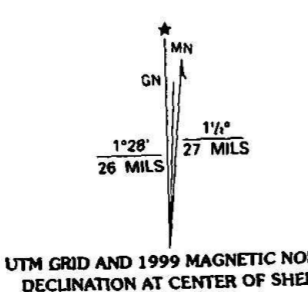


Produced by the United States Geological Survey
Derived from imagery taken 1989 and other sources. Photospectred using imagery taken 1995; no major culture or drainage changes observed. PLSS and survey control current as of 1991. Boundaries verified 1999.

North American Datum of 1927 (NAD 27). Projection and 10 000-foot ticks: Louisiana coordinate system, south zone (Lambert conformal conic).
1000-meter Universal Transverse Mercator grid, zone 15.

North American Datum of 1983 (NAD 83) is shown by dashed corner ticks. The values of the shift between NAD 27 and NAD 83 for 7.5-minute intersections are obtainable from National Geodetic Survey NADCON software.

All or part of this quadrangle lies within a subsidence area. There may be private inholdings within the boundaries of the National or State reservations shown on this map.



CONTOUR INTERVAL 5 FEET
NATIONAL GEODETIC VERTICAL DATUM OF 1929
TO CONVERT FROM FEET TO METERS, MULTIPLY BY 0.3048
THIS MAP COMPLIES WITH NATIONAL MAP ACCURACY STANDARDS
FOR SALE BY U.S. GEOLOGICAL SURVEY, P.O. BOX 25286, DENVER, COLORADO 80225
AND LOUISIANA DEPARTMENT OF TRANSPORTATION AND DEVELOPMENT, BATON ROUGE, LOUISIANA 70804
A FOLDER DESCRIBING TOPOGRAPHIC MAPS AND SYMBOLS IS AVAILABLE ON REQUEST



ROAD CLASSIFICATION

Primary highway, hard surface	Light-duty road, hard or improved surface
Secondary highway, hard surface	Unimproved road
Interstate Route	U. S. Route
	State Route

BERTRANDVILLE, LA.

1995

NIMA 7943 I SE-SERIES V885

