

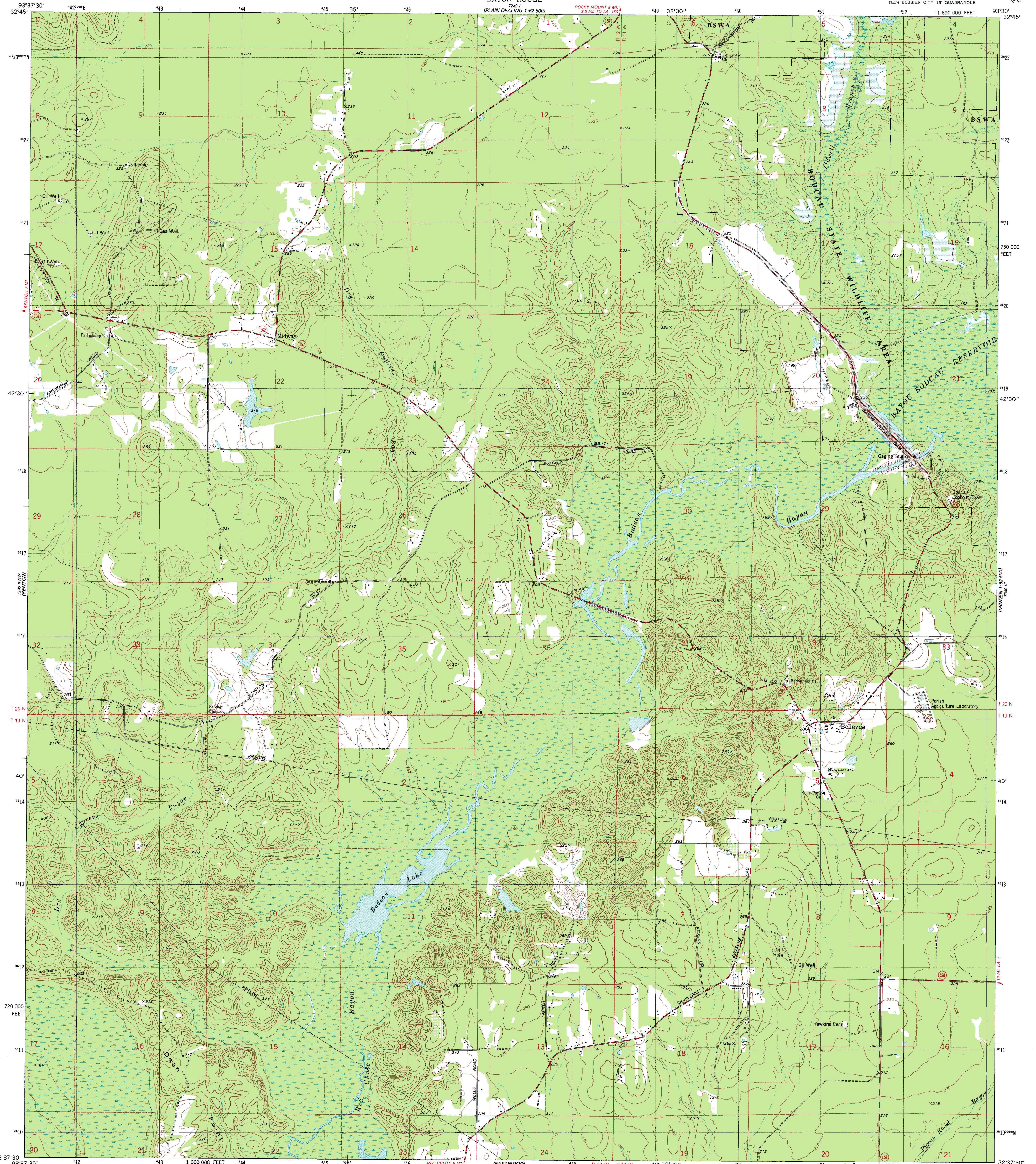
PLAIN DEALING
1:62 500

UNITED STATES
DEPARTMENT OF THE INTERIOR
GEOLOGICAL SURVEY

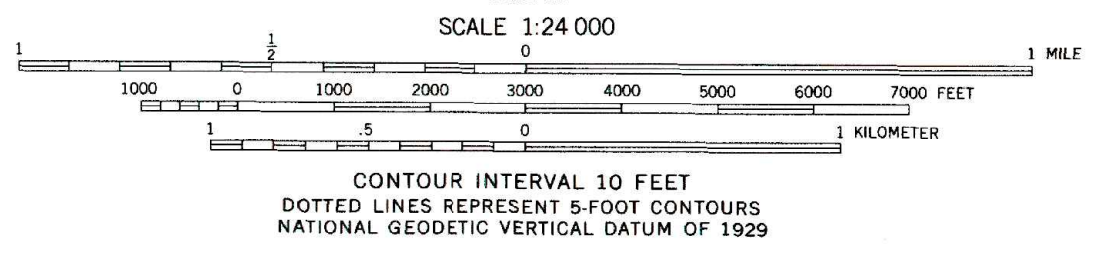
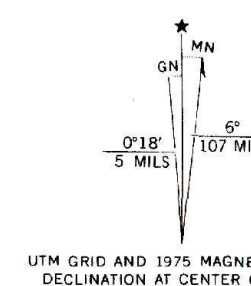
STATE OF LOUISIANA
DEPARTMENT OF PUBLIC WORKS
BATON ROUGE

BODCAU LAKE QUADRANGLE
LOUISIANA—BOSSIER PARISH
7.5 MINUTE SERIES (TOPOGRAPHIC)
NE/4 BOSSIER CITY 15' QUADRANGLE

728 II W
(SERRAVALLO)
1:62 500



Mapped, edited, and published by the Geological Survey
Control by USGS and NOS/NOAA
Topography by photogrammetric methods from aerial photographs taken 1974. Field checked 1975
Projection and 10,000-foot grid ticks: Louisiana coordinate system, north zone (Lambert conformal conic)
1000-meter Universal Transverse Mercator grid, zone 15 1927 North American datum
Areas covered by dashed light-blue pattern are subject to frequent inundation
Fine red dashed lines indicate selected fence and field lines where generally visible on aerial photographs. This information is unchecked



ROAD CLASSIFICATION

Primary highway, hard surface	Light-duty road, hard or improved surface
Secondary highway, hard surface	Unimproved road
Interstate Route	U. S. Route
	State Route

THIS MAP COMPLIES WITH NATIONAL MAP ACCURACY STANDARDS
FOR SALE BY U. S. GEOLOGICAL SURVEY, DENVER, COLORADO 80225, OR RESTON, VIRGINIA 22092
AND STATE OF LOUISIANA, DEPARTMENT OF PUBLIC WORKS, BATON ROUGE, LOUISIANA 70804
A FOLDER DESCRIBING TOPOGRAPHIC MAPS AND SYMBOLS IS AVAILABLE ON REQUEST

BODCAU LAKE, LA.
NE/4 BOSSIER CITY 15' QUADRANGLE
N3237.5 - W9330/7.5
1975
AMS 7249 II NE—SERIES V885