

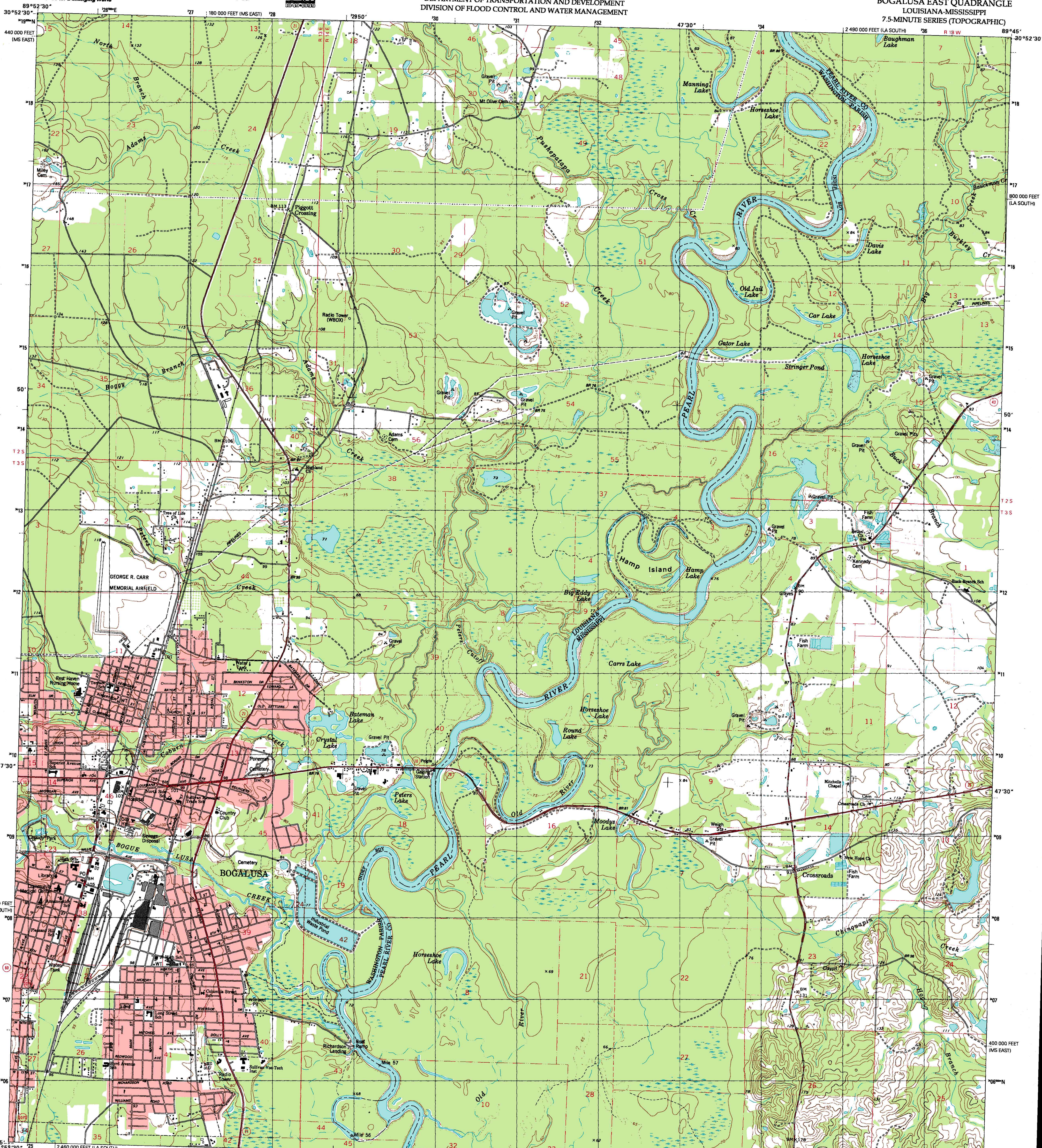


U.S. DEPARTMENT OF THE INTERIOR  
U.S. GEOLOGICAL SURVEY



STATE OF LOUISIANA  
DEPARTMENT OF TRANSPORTATION AND DEVELOPMENT  
DIVISION OF FLOOD CONTROL AND WATER MANAGEMENT

BOGALUSA EAST QUADRANGLE  
LOUISIANA-MISSISSIPPI  
7.5-MINUTE SERIES (TOPOGRAPHIC)



Produced by the United States Geological Survey  
Derived from imagery taken 1977 and other sources. Photospectroscopically enhanced to show drainage changes. PLSS and survey control current as of 1979. Boundaries, other than corporate, verified 1979.

North American Datum of 1927 (NAD 27)  
Projection: Louisiana coordinate system, south zone (Lambert conformal conic)  
10 000-foot ticks: Louisiana coordinate system, south zone and Mississippi coordinate system, east zone  
1000-meter Universal Transverse Mercator grid, zone 16

North American Datum of 1983 (NAD 83) is shown by dashed corner ticks. The values of the shift between NAD 27 and NAD 83 for 7.5-minute intersections are obtainable from National Geodetic Survey NADCON software.

SCALE 1:24 000

CONTOUR INTERVAL 10 FEET  
SUPPLEMENTARY CONTOUR INTERVAL 5 FEET  
NATIONAL GEODETIC VERTICAL DATUM OF 1929  
TO CONVERT FROM FEET TO METERS, MULTIPLY BY 0.3048

THIS MAP COMPLIES WITH NATIONAL MAP ACCURACY STANDARDS  
FOR SALE BY U.S. GEOLOGICAL SURVEY, P.O. BOX 25286, DENVER, COLORADO 80225  
AND LOUISIANA DEPARTMENT OF TRANSPORTATION AND DEVELOPMENT, BATON ROUGE, LOUISIANA 70804  
A FOLDER DESCRIBING TOPOGRAPHIC MAPS AND SYMBOLS IS AVAILABLE ON REQUEST

ROAD CLASSIFICATION

- Primary highway, hard surface
- Secondary highway, hard surface
- Light duty road, hard or improved surface
- Unimproved road
- Interstate Route
- U.S. Route
- State Route

QUADRANGLE LOCATION

1	2	3
4	5	6
7	8	

1 State Line  
2 Angle  
3 Forts Creek  
4 Bogalusa West  
5 White Sand  
6 Sun  
7 Henleyfield  
8 McNeill

ADJOINING 7.5' QUADRANGLE NAMES  
LA 123D

BOGALUSA EAST, LA-MS  
1997  
NIMA 8045 IV SE-SERIES V885

ISBN 0-607-91720-2  
9 780607 917208