

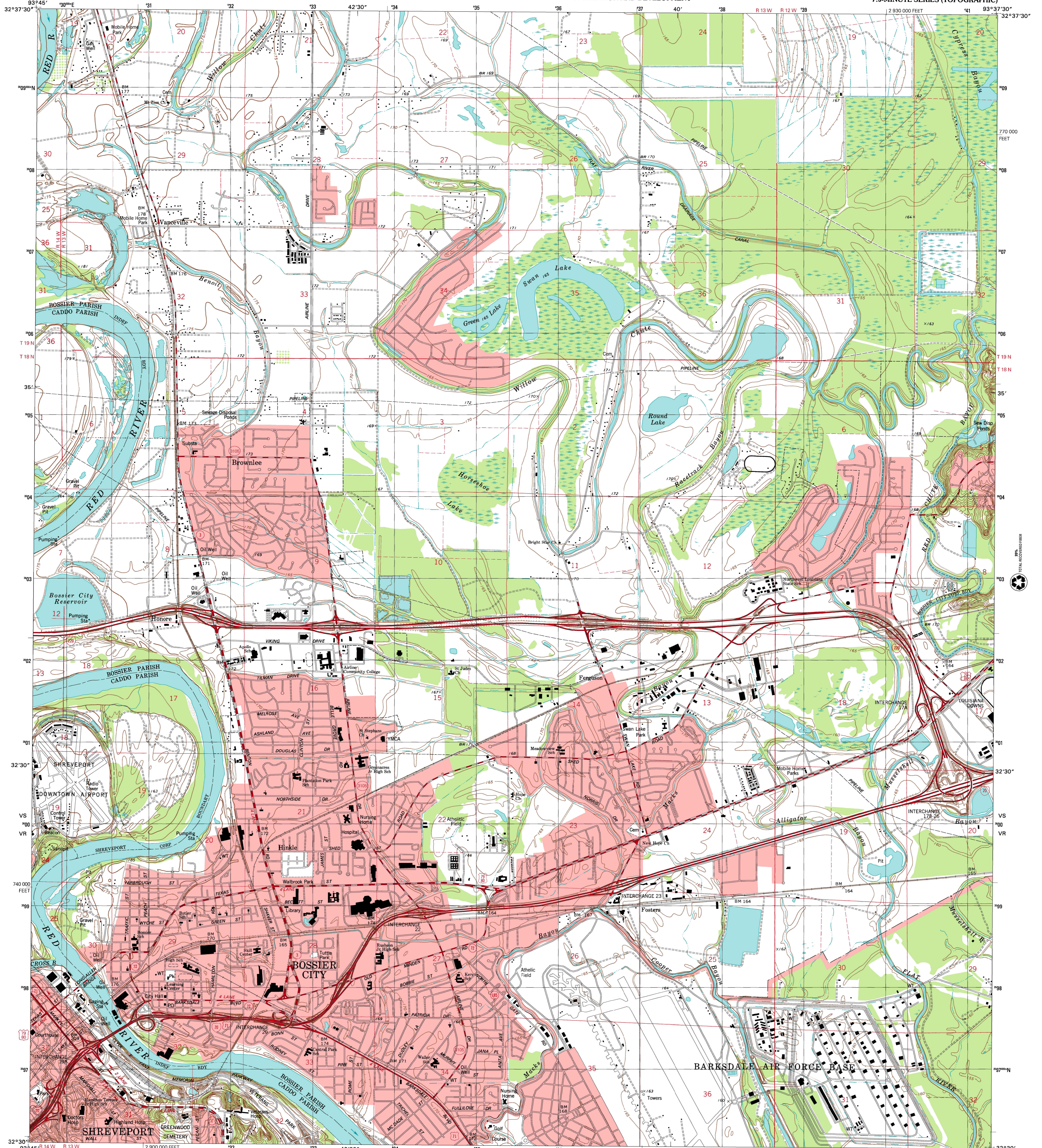


U.S. DEPARTMENT OF THE INTERIOR  
U.S. GEOLOGICAL SURVEY



STATE OF LOUISIANA  
DEPARTMENT OF TRANSPORTATION AND DEVELOPMENT

BOSSIER CITY QUADRANGLE  
LOUISIANA  
7.5-MINUTE SERIES (TOPOGRAPHIC)

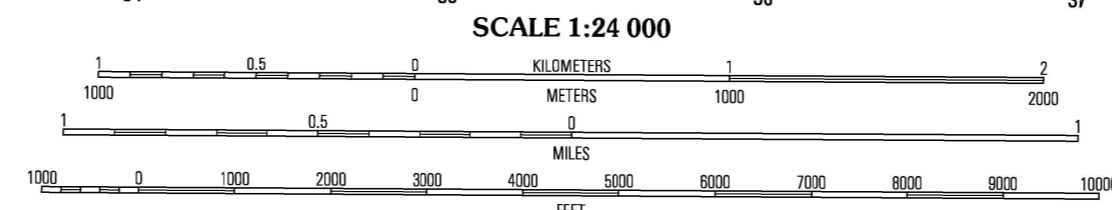
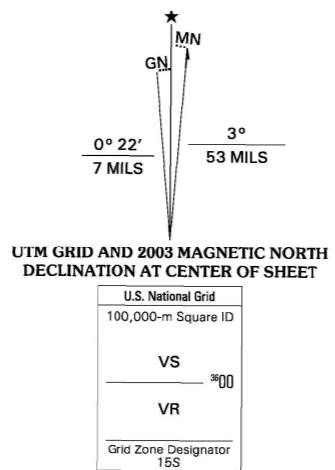


Produced by the United States Geological Survey  
Topography compiled 1974. Planimetry derived from imagery taken 1998 and other sources. Public Land Survey System and survey control current as of 1975. Boundaries current as of 2002.

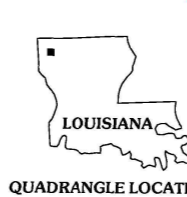
North American Datum of 1983 (NAD 83). Projection and 1000-meter grid: Universal Transverse Mercator, zone 18S. 10 000-foot ticks: Louisiana Coordinate System of 1983 (north zone).

North American Datum of 1927 (NAD 27) is shown by dashed corner ticks. The values of the shift between NAD 83 and NAD 27 for 7.5-minute intersections are obtainable from National Geodetic Survey NADCON software.

There may be private inholdings within the boundaries of the National or State reservations shown on this map. Houses of worship, schools, and other labeled buildings verified 1975.



CONTOUR INTERVAL 5 FEET  
NATIONAL GEODETIC VERTICAL DATUM OF 1929  
TO CONVERT FROM FEET TO METERS, MULTIPLY BY 0.3048



QUADRANGLE LOCATION

ROAD CLASSIFICATION

Primary highway hard surface	Light-duty road, hard or improved surface
Secondary highway hard surface	Unimproved road
Interstate Route	U.S. Route
	State Route

1	2	3	1 Dixie
4	5	6	2 Benton
7	8	9	3 Bodine Lake
			4 North Highlands
			5 Eastwood
			6 Shreveport West
			7 Shreveport East
			8 Sligo

ADJOINING 7.5 QUADRANGLES  
LA 28C

BOSSIER CITY, LA  
1998

NINA 7249 1 SW-SERIES V885

