

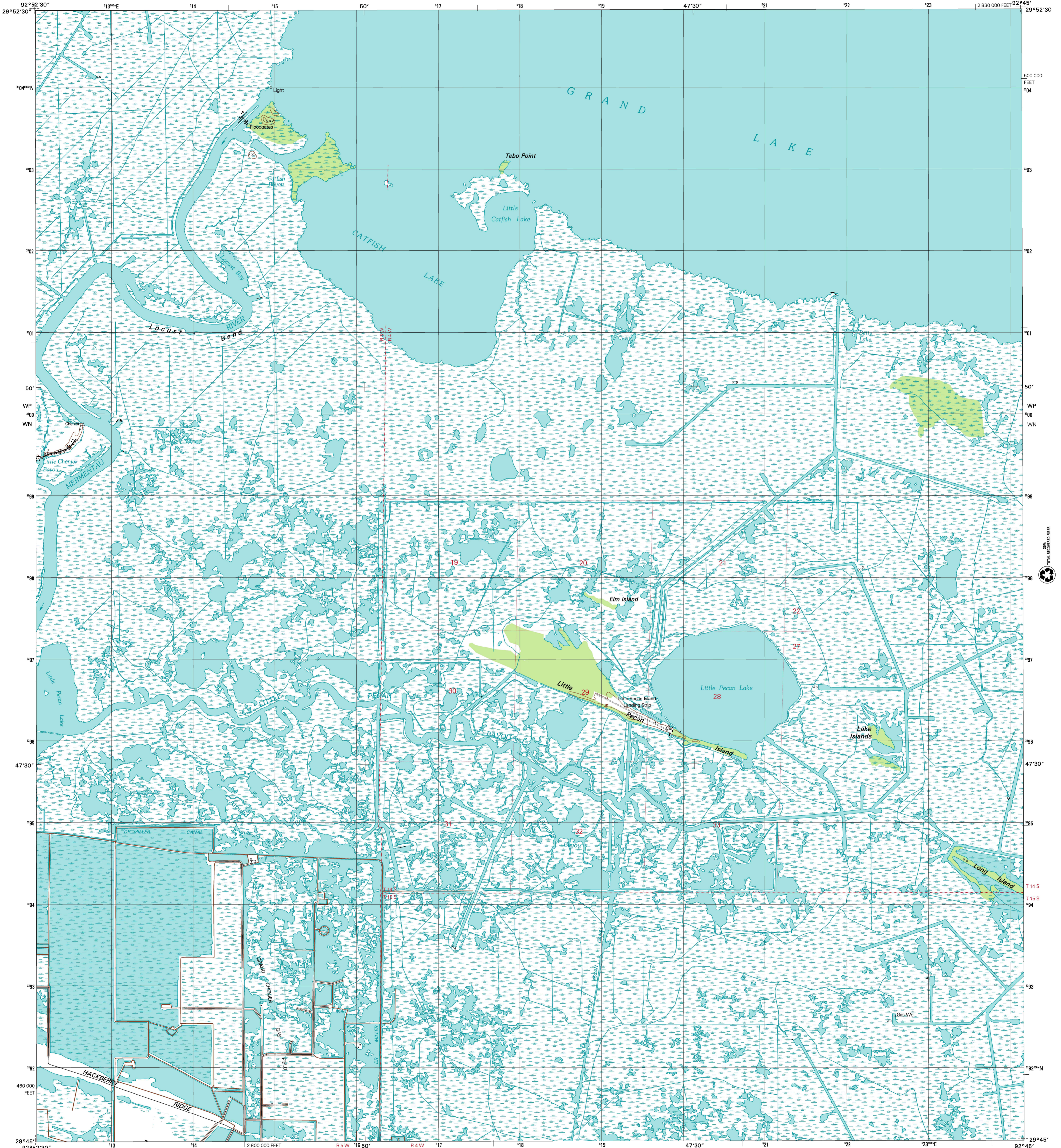


U.S. DEPARTMENT OF THE INTERIOR
U.S. GEOLOGICAL SURVEY

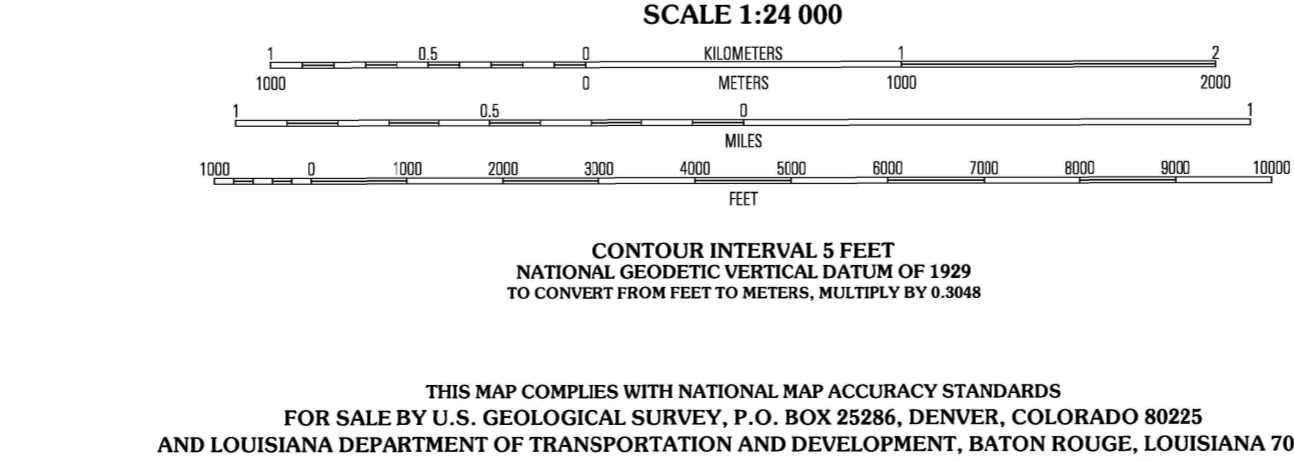
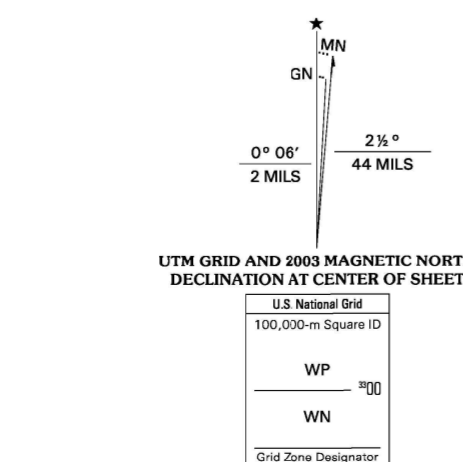


STATE OF LOUISIANA
DEPARTMENT OF TRANSPORTATION AND DEVELOPMENT

CATFISH LAKE QUADRANGLE
LOUISIANA-CAMERON PARISH
7.5-MINUTE SERIES (TOPOGRAPHIC)



Produced by the United States Geological Survey
Topography compiled 1978. Planimetry derived from imagery taken 1998 and other sources. Public Land Survey System and survey control current as of 1978. Boundaries current as of 2003.
North American Datum of 1983 (NAD 83). Projection and 1 000-meter grid: Universal Transverse Mercator, zone 15R 10 000-foot ticks: Louisiana Coordinate System of 1983 (south) zone.
North American Datum of 1927 (NAD 27) is shown by dashed corner ticks. The values of the shift between NAD 83 and NAD 27 for 7.5-minute intersections are obtainable from National Geodetic Survey NADCON software.
Where omitted, land lines have not been established or are not shown because of insufficient data.
Dotted land lines established by private survey.
This quadrangle covers a subsidence area.
Houses of worship, schools, and other labeled buildings verified 1978.



ROAD CLASSIFICATION

Primary highway hard surface	Light-duty road, hard or improved surface
Secondary highway hard surface	Unimproved road
Intersite Route	U.S. Route
	State Route

QUADRANGLE LOCATION

1	2	3	1 Lake Murre
			2 Little Lake
			3 Mallard Bay
4		5	4 Grand Chenier
			5 Collette Lake
			6 Hog Bayou
			7 Cow Island
6	7	8	8 Deep Lake

CATFISH LAKE, LA
1998
NIMA 7443 IV SE-SERIES V885

