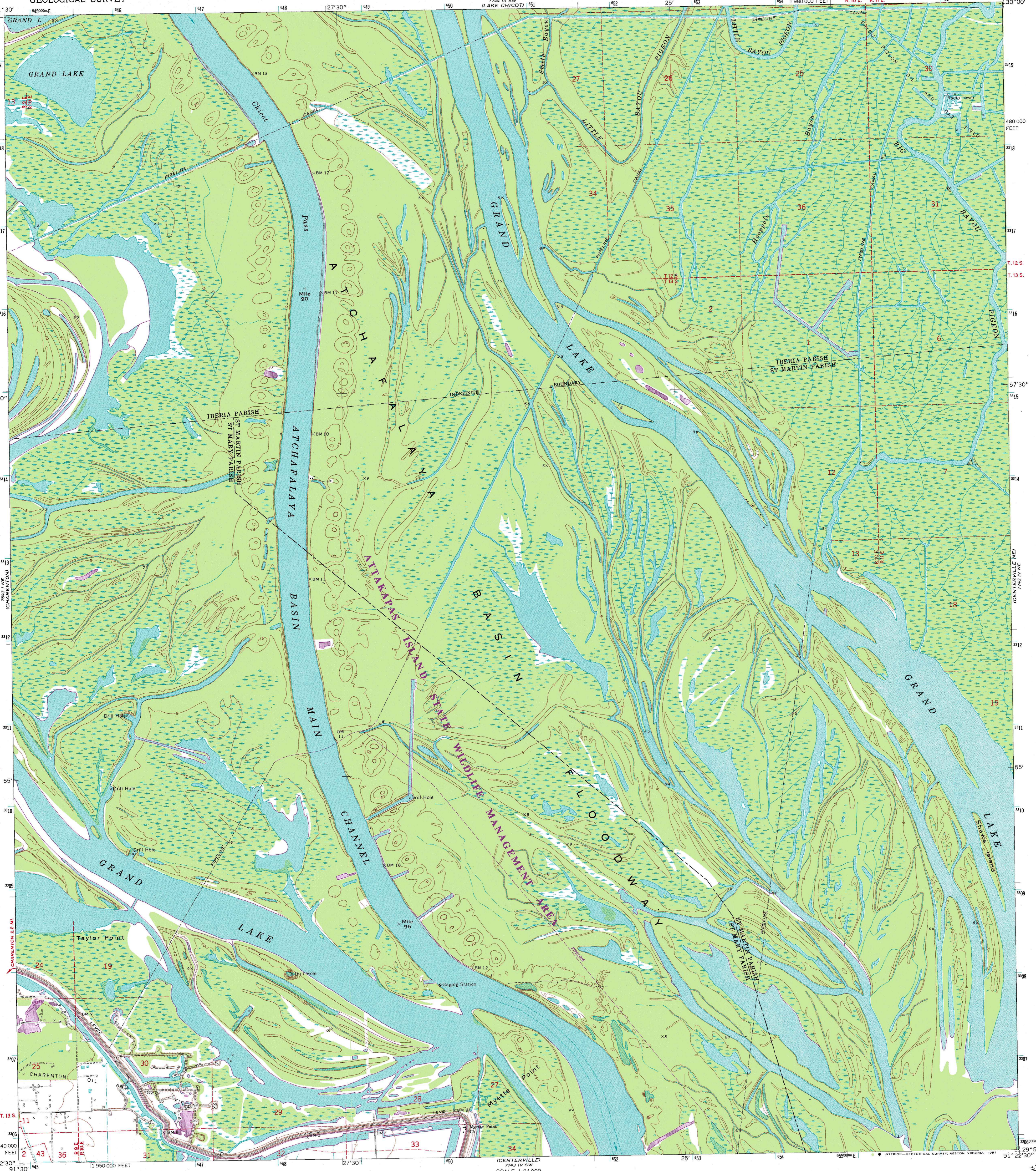


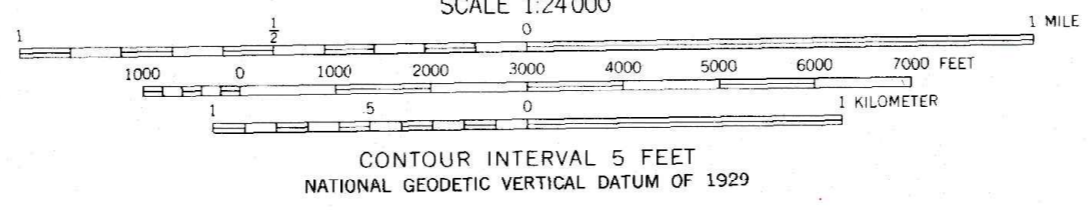
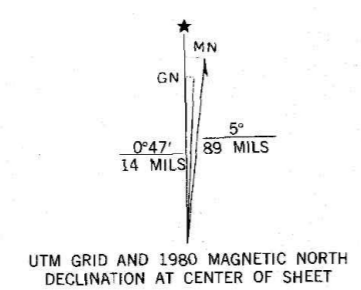
7463 11 SE (LAKE CHARLTON)

7463 11 SE (PIGEON)

UNITED STATES
DEPARTMENT OF THE INTERIOR
GEOLOGICAL SURVEY



Mapped, edited, and published by the Geological Survey
Control by USGS and USC&GS
Topography by photogrammetric methods from aerial
photographs taken 1968 and 1970 and planimetric surveys 1970
Polyconic projection. 1927 North American datum
10,000-foot grid based on Louisiana coordinate system, south zone
1000-meter Universal Transverse Mercator grid ticks,
zone 15, shown in blue
Where omitted, land lines have not been established
or are not shown because of insufficient data
All or part of this quadrangle lies within a subsidence area
To place on the predicted North American Datum 1983
move the projection lines 19 meters south and
11 meters east as shown by dashed corner ticks
There may be private inholdings within the boundaries
of the National or State reservations shown on this map



THIS MAP COMPLIES WITH NATIONAL MAP ACCURACY STANDARDS
FOR SALE BY U. S. GEOLOGICAL SURVEY, DENVER, COLORADO 80225, OR RESTON, VIRGINIA 22092
AND STATE OF LOUISIANA, DEPARTMENT OF PUBLIC WORKS, BATON ROUGE, LOUISIANA 70804
A FOLDER DESCRIBING TOPOGRAPHIC MAPS AND SYMBOLS IS AVAILABLE ON REQUEST



Revisions shown in purple and woodland compiled from
aerial photographs taken 1978. Map edited 1980
This information not field checked

ROAD CLASSIFICATION
Light-duty road, all weather, Unimproved road, fair or dry
improved surface weather

CENTERVILLE NW, LA.
NW/4 CENTERVILLE 15' QUADRANGLE
N2952.5-W9122.5/7.5

1970
PHOTOREVISED 1980
DMA 7743 IV NW-SERIES V885