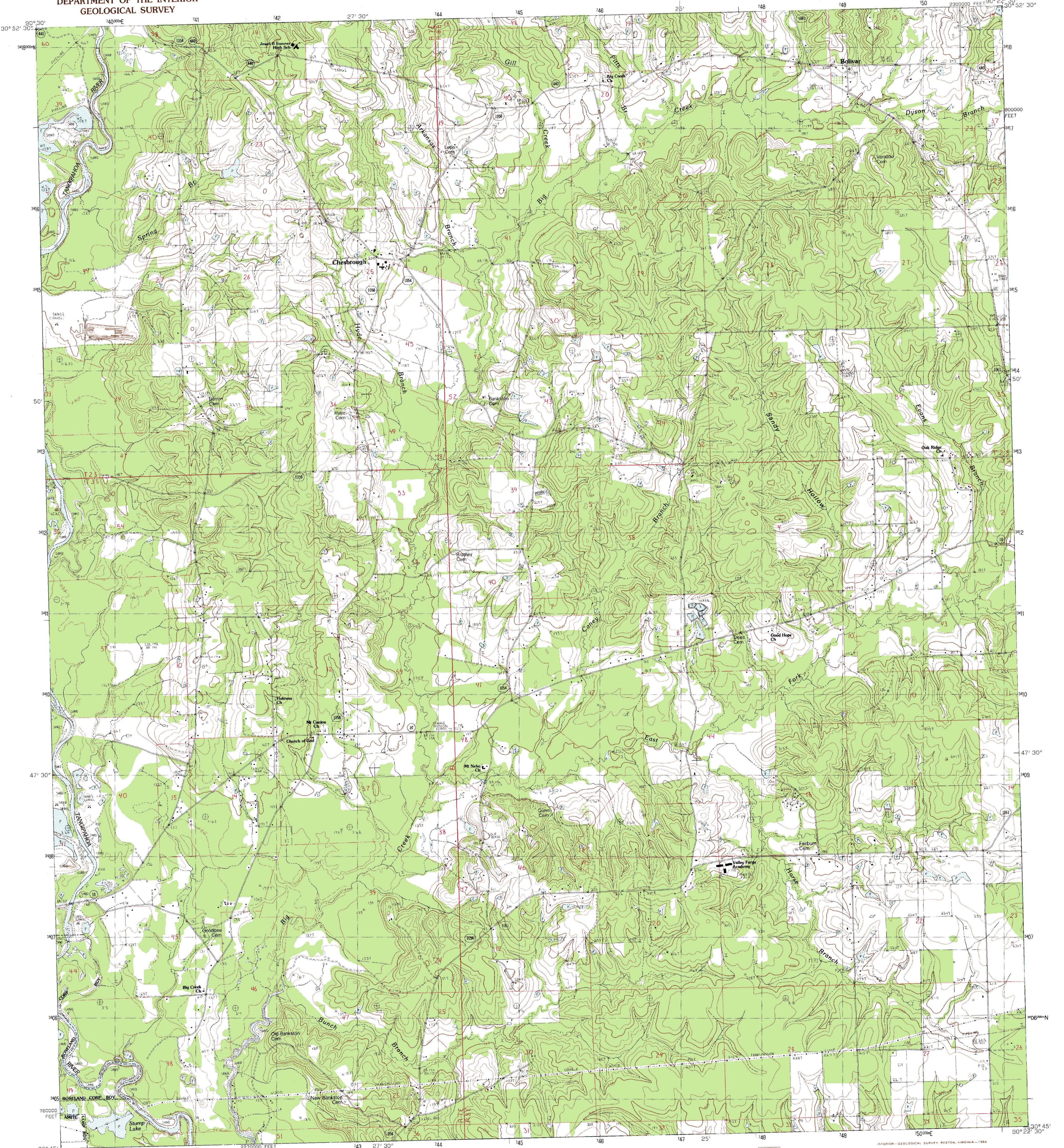


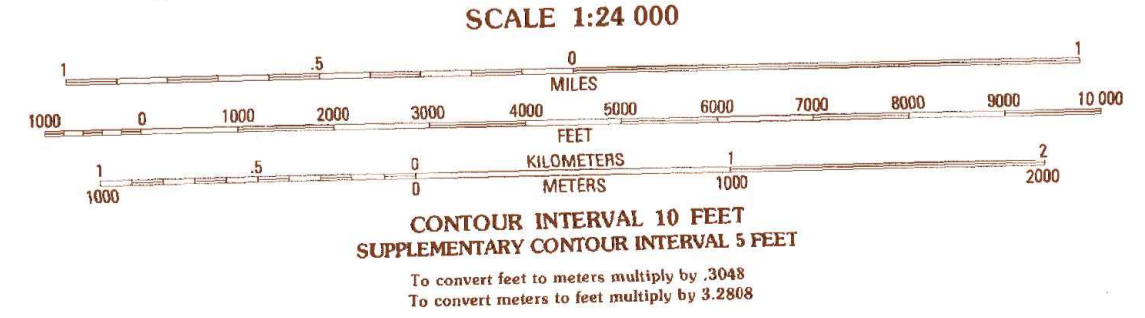
UNITED STATES  
DEPARTMENT OF THE INTERIOR  
GEOLOGICAL SURVEY

CHESBROUGH QUADRANGLE  
LOUISIANA-TANGIPAHOA PARISH  
7.5 MINUTE SERIES (TOPOGRAPHIC)



PRODUCED BY THE UNITED STATES GEOLOGICAL SURVEY  
CONTROL BY USGS AND NOS/NOAA 1978  
COMPILED FROM AERIAL PHOTOGRAPHS TAKEN 1983  
FIELD CHECKED 1981. MAP EDITED 1983  
PROJECTION LAMBERT CONFORMAL CONIC  
GRID: 1000-METER UNIVERSAL TRANSVERSE MERCATOR  
ZONE 15  
18000-FOOT STATE GRID TICKS LOUISIANA, SOUTH ZONE  
UTM GRID DECLINATION 4900 EAST  
1983 MAGNETIC NORTH DECLINATION 4900 EAST  
VERTICAL DATUM NATIONAL GEODETIC VERTICAL DATUM OF 1929  
HORIZONTAL DATUM 1927 NORTH AMERICAN DATUM OF 1983  
To place on the predicted North American Datum of 1983  
move the projection lines as shown by dashed corner ticks  
(17 meters south and 8 meters east)  
There may be private inholdings within the boundaries of any  
Federal and State reservations shown on this map

**PROVISIONAL MAP**  
Produced from original  
manuscript drawings. Information  
shown as of date of  
field check.



THIS MAP COMPLIES WITH NATIONAL MAP ACCURACY STANDARDS  
FOR SALE BY U.S. GEOLOGICAL SURVEY, DENVER, COLORADO 80225, OR RESTON, VIRGINIA 22092  
AND THE STATE OF LOUISIANA, DEPARTMENT OF PUBLIC WORKS, BATON ROUGE, LOUISIANA 70804

ROAD LEGEND

- Improved Road
- Unimproved Road
- Trail
- Interstate Route
- U. S. Route
- State Route

QUADRANGLE LOCATION

1	2	3	1 Kentwood
		2	2 Spring Creek
		3	3 Mount Hermon
		4	4 Rowland
4		5	5 Wilmer
		6	6 Amite
		7	7 Lorange
		8	8 Husser
6	7	8	

ADJOINING 7.5 QUADRANGLE NAMES

**CHESBROUGH, LOUISIANA**  
SW/4 MOUNT HERMON 15' QUADRANGLE  
**PROVISIONAL EDITION 1983**  
30090-G4-TF-024