



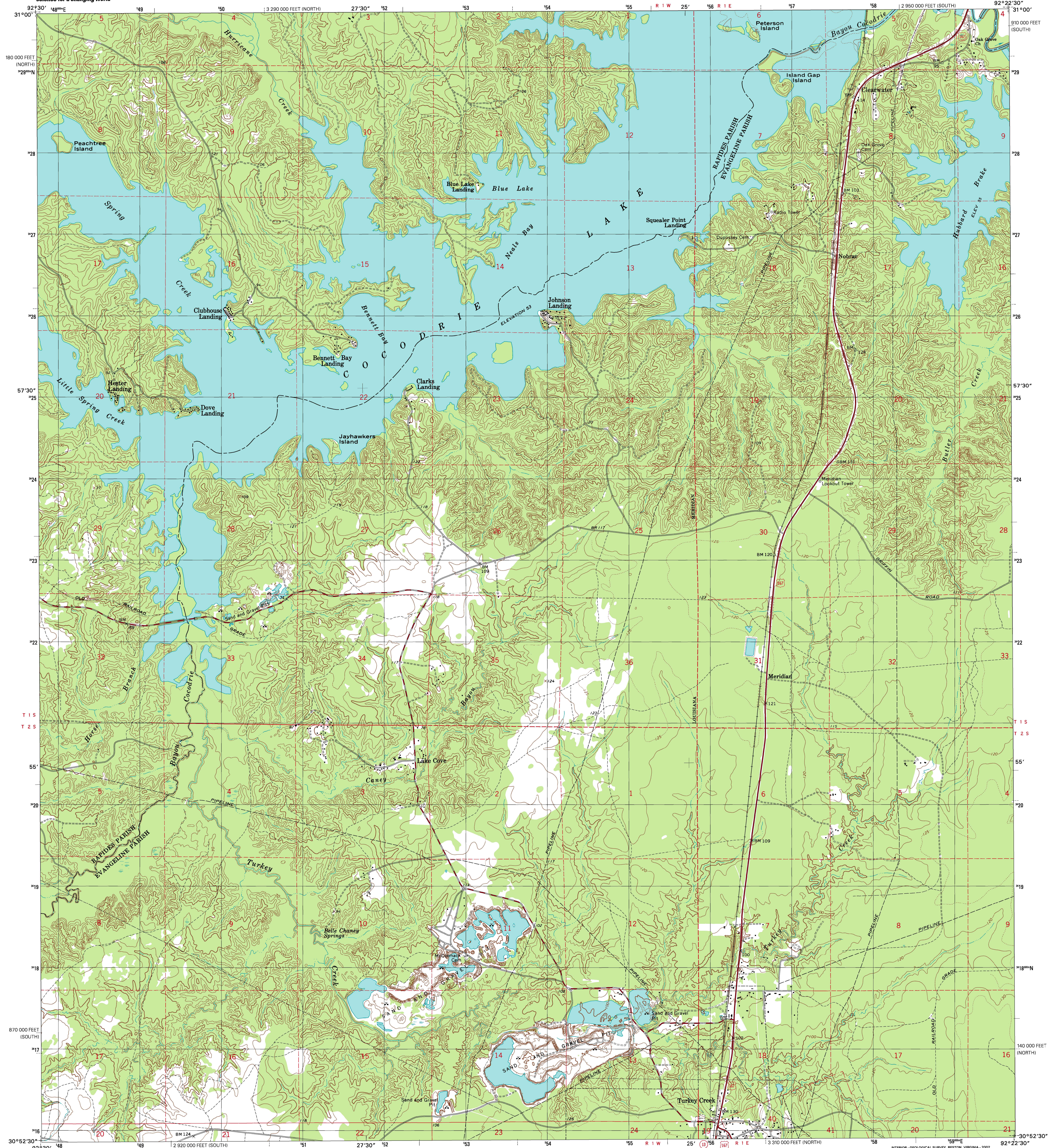
U.S. DEPARTMENT OF THE INTERIOR
U.S. GEOLOGICAL SURVEY



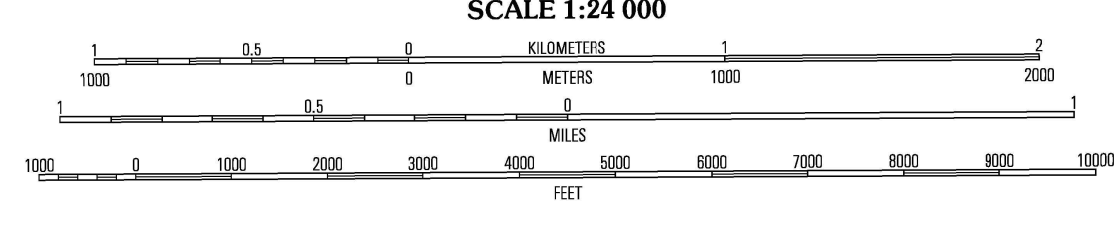
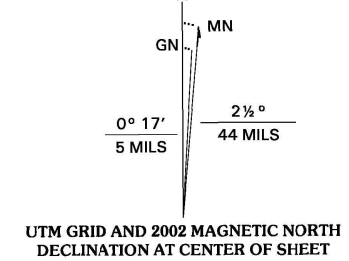
STATE OF LOUISIANA
DEPARTMENT OF TRANSPORTATION AND DEVELOPMENT

COCODRIE LAKE QUADRANGLE
LOUISIANA
7.5-MINUTE SERIES (TOPOGRAPHIC)

JOAN JOHNSON cocodrie



Produced by the United States Geological Survey in cooperation with Louisiana Department of Transportation and Development
Topography compiled 1966. Planimetry derived from imagery taken 1998 and other sources. Public Land Survey System and survey control current as of 1967. Boundaries current as of 2001. North American Datum of 1983 (NAD 83). Projection and 1 000-meter grid: Universal Transverse Mercator, zone 15 10 000-foot ticks; Louisiana Coordinate System of 1983 (south and north zones)
North American Datum of 1927 (NAD 27) is shown by dashed corner ticks. The values of the shift between NAD 83 and NAD 27 for 7.5-minute intersections are obtainable from National Geodetic Survey NADCON software
Houses of worship, schools, and other labeled buildings verified 1967



ROAD CLASSIFICATION

Primary highway hard surface	Light-duty road, hard or improved surface
Secondary highway hard surface	Unimproved road
Interstate Route	U.S. Route
	State Route

1	2	3	1 Forest Hill
4	5	6	2 Leconte
7	8	9	3 Chenaville
			4 Glenmora
			5 Lone Pine
			6 Beaver
			7 Pine Prairie
			8 Saint Landry

ADJOINING 7.5' QUADRANGLES
LA 211C

COCODRIE LAKE, LA
1998
NIMA 7545 IV NW-SERIES V885

