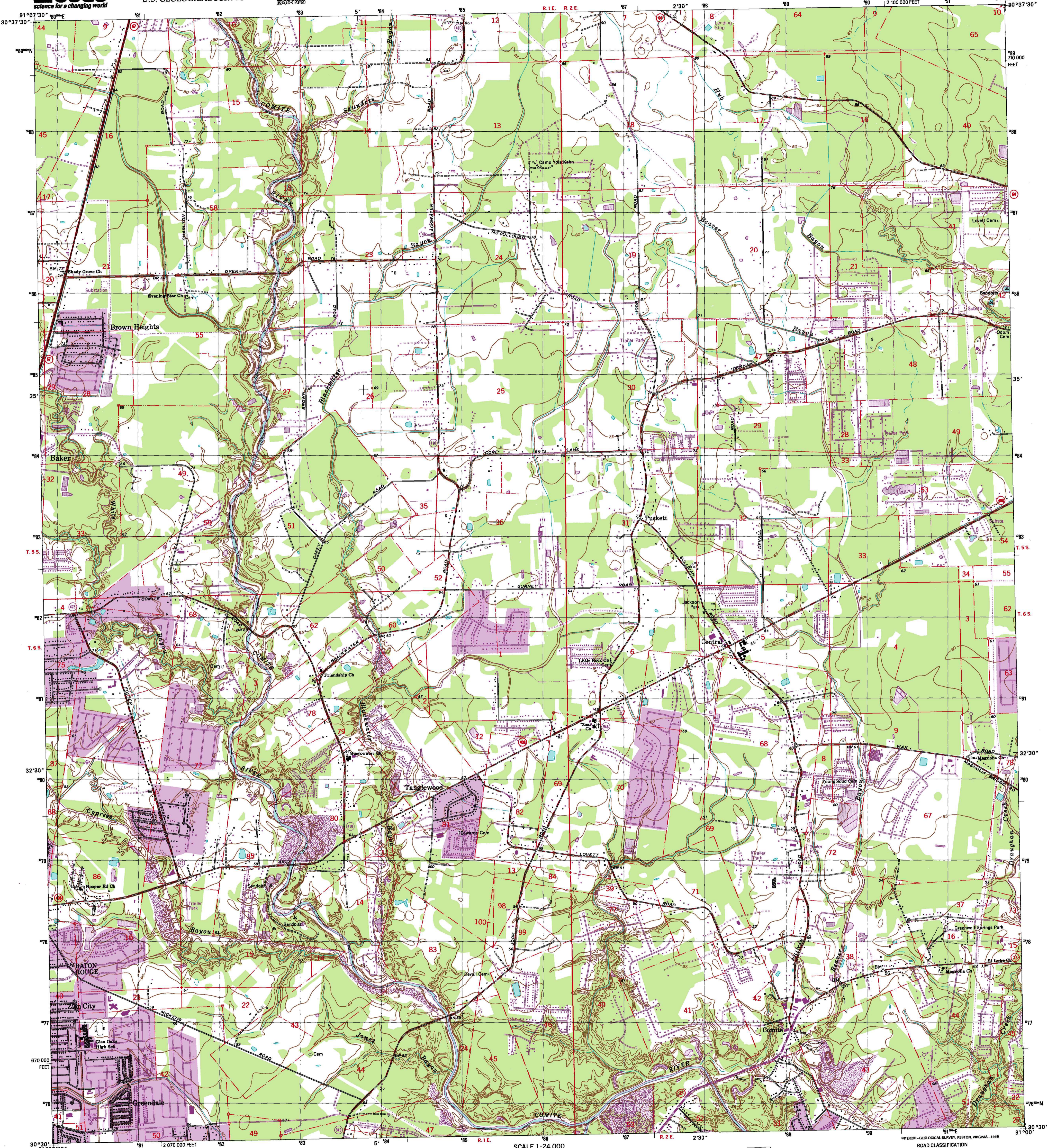




U.S. DEPARTMENT OF THE INTERIOR
U.S. GEOLOGICAL SURVEY



COMITE QUADRANGLE
LOUISIANA-EAST BATON ROUGE PARISH
7.5-MINUTE SERIES (TOPOGRAPHIC)



Produced by the United States Geological Survey
Topography compiled 1963. Planimetry derived from imagery taken 1989 and other sources. Photospotchecked using imagery dated 1996; no major culture or drainage changes observed. PLS and survey control current as of 1963. Boundaries verified 1999.

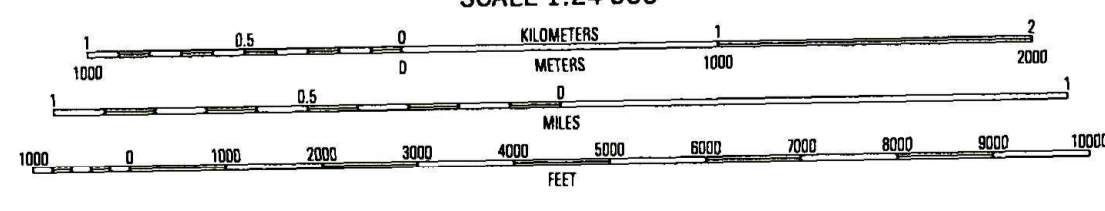
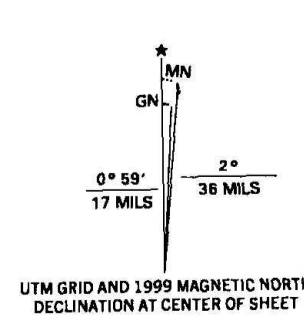
North American Datum of 1927 (NAD 27). Projection and 10 000-foot ticks: Louisiana coordinate system, south zone (Lambert conformal conic).
1000-meter Universal Transverse Mercator grid, zone 15

North American Datum of 1983 (NAD 83) is shown by dashed corner ticks. The values of the shift between NAD 27 and NAD 83 for 7.5-minute intersections are obtainable from National Geodetic Survey NADCON software.

This map covers a subsidence area. Evaluate relief and elevation information based on recent sources.

There may be private inholdings within the boundaries of the National or State reservations shown on this map.

Information shown in purple may not meet USGS content standards and may conflict with previously mapped contours.



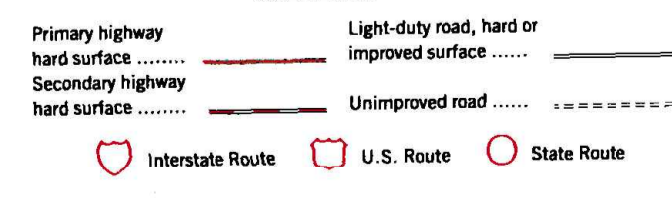
CONTOUR INTERVAL 5 FEET
NATIONAL GEODETIC VERTICAL DATUM OF 1929
TO CONVERT FROM FEET TO METERS, MULTIPLY BY 0.3048

THIS MAP COMPLIES WITH NATIONAL MAP ACCURACY STANDARDS
FOR SALE BY U.S. GEOLOGICAL SURVEY, P.O. BOX 25286, DENVER, COLORADO 80225
AND LOUISIANA DEPARTMENT OF TRANSPORTATION AND DEVELOPMENT, BATON ROUGE, LOUISIANA 70804
A FOLDER DESCRIBING TOPOGRAPHIC MAPS AND SYMBOLS IS AVAILABLE ON REQUEST



1	2	3	1 Zachary
			2 Fred
			3 Pinks
4	5	6	4 Scotlandville
			5 Watson
			6 Baton Rouge West
6	7	8	7 Baton Rouge East
			8 Denham Springs

ADJOINING 7.5' QUADRANGLE NAMES



COMITE, LA
1996

NDMA 7745 II SE-SERIES V885

