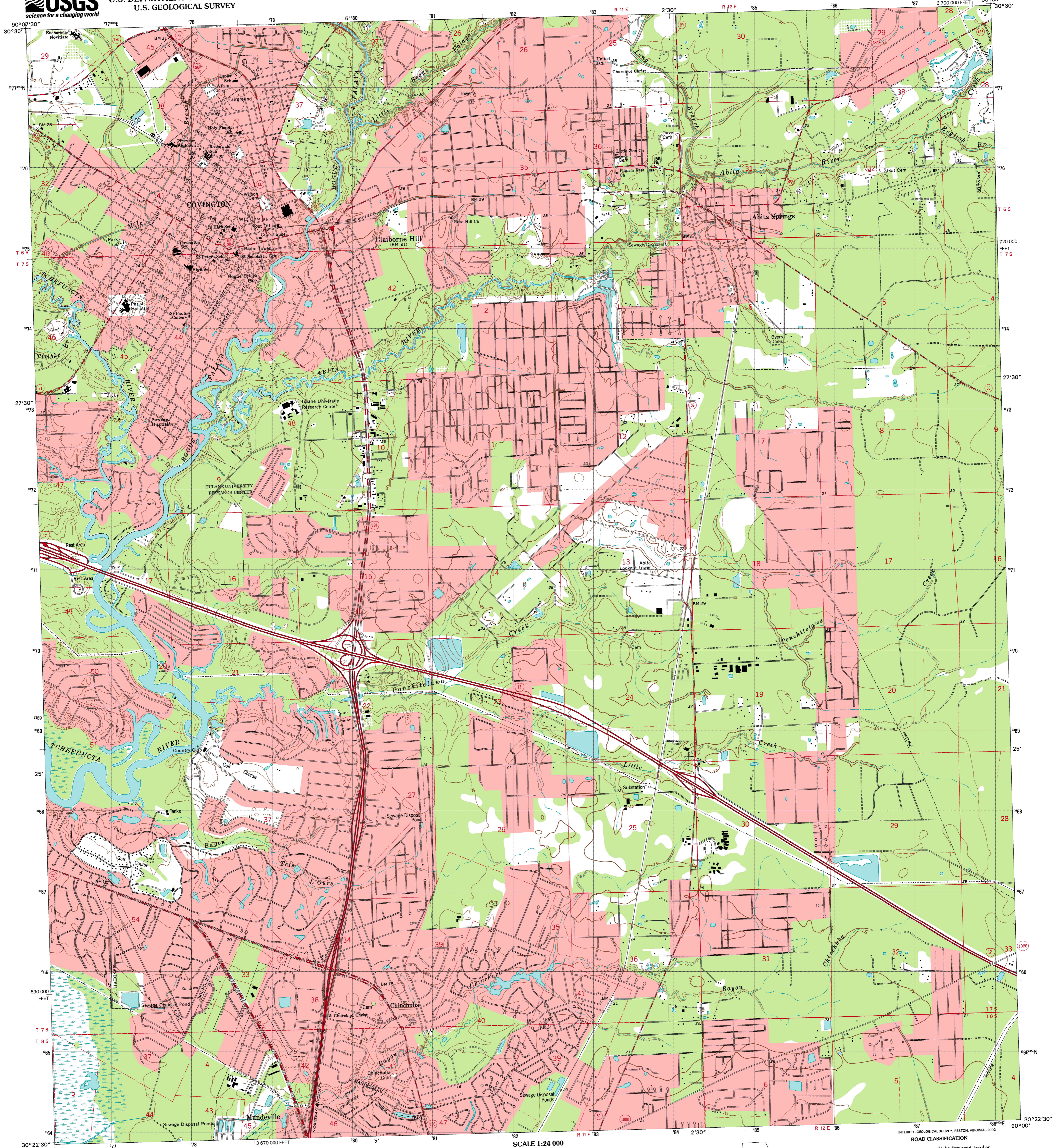


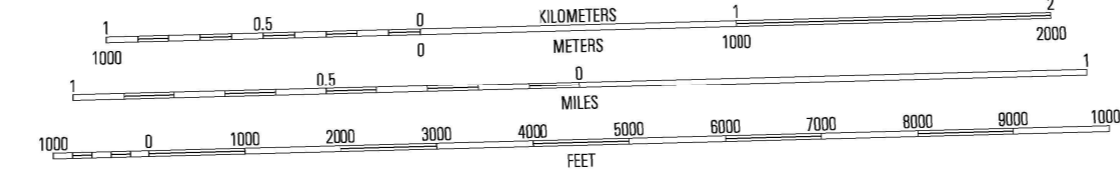
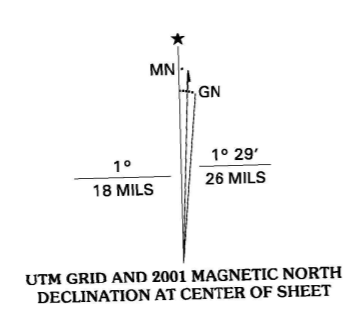


U.S. DEPARTMENT OF THE INTERIOR  
U.S. GEOLOGICAL SURVEY

COVINGTON QUADRANGLE  
LOUISIANA-ST. TAMMANY PARISH  
7.5-MINUTE SERIES (TOPOGRAPHIC)



Produced by the United States Geological Survey  
Topography compiled 1965. Planimetry derived from imagery taken 1998 and other sources. Public Land Survey System and survey control current as of 1968.  
North American Datum of 1983 (NAD 83). Projection and 1000-meter grid: Universal Transverse Mercator, zone 15. 10 000-foot ticks: Louisiana Coordinate System of 1983 (south zone).  
North American Datum of 1927 (NAD 27) is shown by dashed corner ticks. The values of the shift between NAD 83 and NAD 27 for 7.5-minute intersections are obtainable from National Geodetic Survey NADCON software.  
This quadrangle covers a subsidence area.  
Landmark buildings verified 1968.



CONTOUR INTERVAL 5 FEET  
NATIONAL GEODETIC VERTICAL DATUM OF 1929  
TO CONVERT FROM FEET TO METERS, MULTIPLY BY 0.3048



QUADRANGLE LOCATION

ROAD CLASSIFICATION

Primary highway	Light-duty road, hard or improved surface
Secondary highway	Unimproved road
Interstate Route	U.S. Route
	State Route

1	2	3	1 Martindale
4	5	6	2 Washboro
7	8	9	3 Bush
			4 Mandeville
			5 St. Tammany
			6 Covington SW
			7 Mandeville
			8 Lacombe

COVINGTON, LA  
1998

NIMA 7944 1E-SERIES V885

THIS MAP COMPLIES WITH NATIONAL MAP ACCURACY STANDARDS  
FOR SALE BY U.S. GEOLOGICAL SURVEY, P.O. BOX 25286, DENVER, COLORADO 80225  
AND LOUISIANA DEPARTMENT OF TRANSPORTATION AND DEVELOPMENT, BATON ROUGE, LOUISIANA 70804  
A FOLDER DESCRIBING TOPOGRAPHIC MAPS AND SYMBOLS IS AVAILABLE ON REQUEST



BASE SHEET: 15010, 15011, 15012, 15013, 15014, 15015, 15016, 15017, 15018, 15019, 15020, 15021, 15022, 15023, 15024, 15025, 15026, 15027, 15028, 15029, 15030, 15031, 15032, 15033, 15034, 15035, 15036, 15037, 15038, 15039, 15040, 15041, 15042, 15043, 15044, 15045, 15046, 15047, 15048, 15049, 15050, 15051, 15052, 15053, 15054, 15055, 15056, 15057, 15058, 15059, 15060, 15061, 15062, 15063, 15064, 15065, 15066, 15067, 15068, 15069, 15070, 15071, 15072, 15073, 15074, 15075, 15076, 15077, 15078, 15079, 15080, 15081, 15082, 15083, 15084, 15085, 15086, 15087, 15088, 15089, 15090, 15091, 15092, 15093, 15094, 15095, 15096, 15097, 15098, 15099, 15100