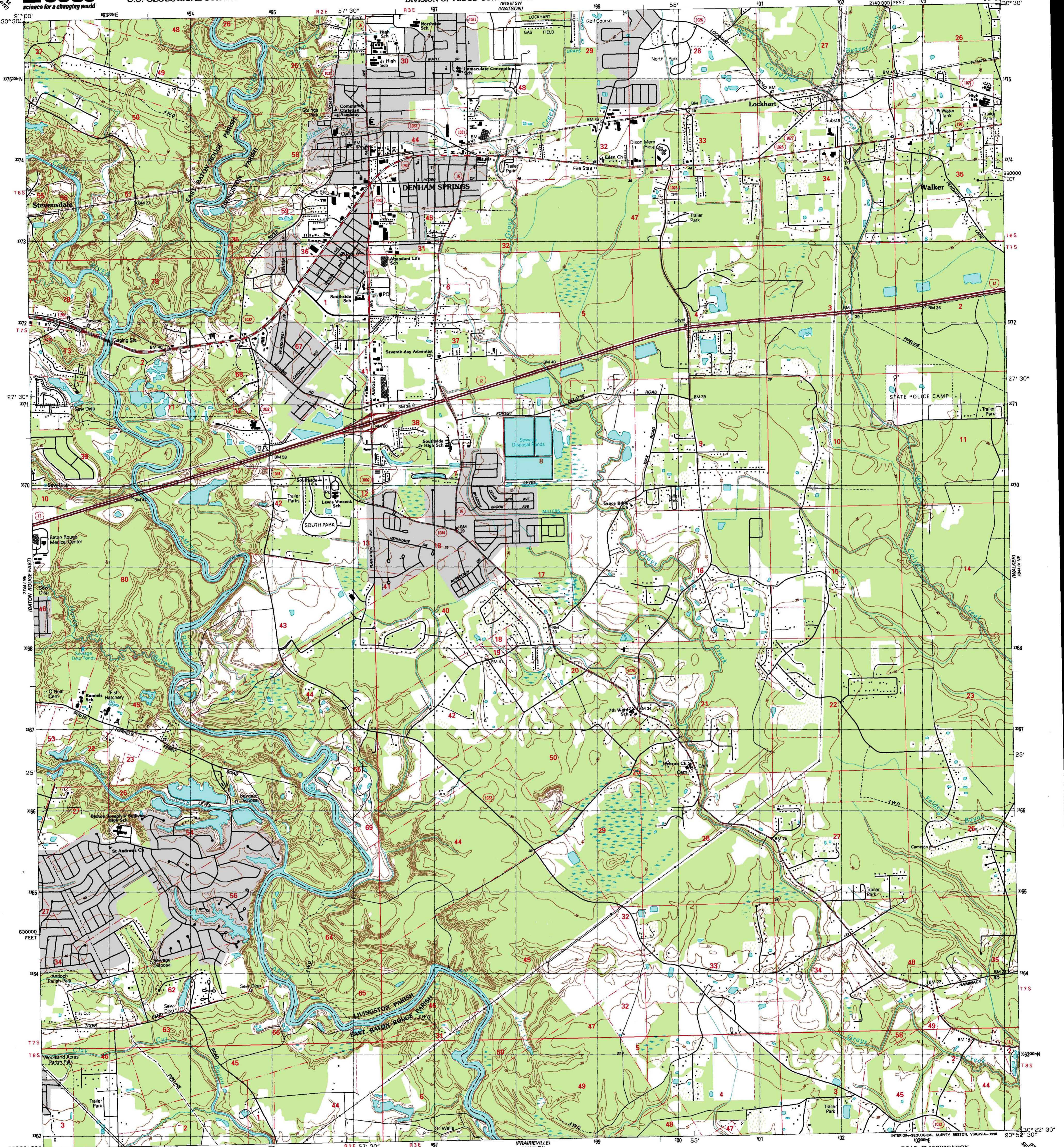




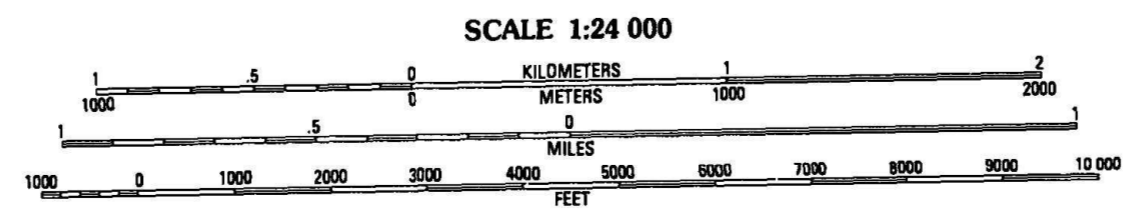
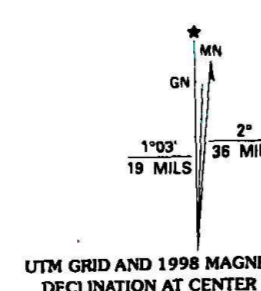
U.S. DEPARTMENT OF THE INTERIOR
U.S. GEOLOGICAL SURVEY

STATE OF LOUISIANA
DEPARTMENT OF TRANSPORTATION AND DEVELOPMENT
DIVISION OF FLOOD CONTROL AND WATER MANAGEMENT

DENHAM SPRINGS QUADRANGLE
LOUISIANA
7.5 MINUTE SERIES (TOPOGRAPHIC)



Produced by the United States Geological Survey
Derived from imagery taken 1989 and other sources. Photoinspected using imagery taken 1995; no major culture or drainage changes observed. PLSS and survey control current as of 1990. Boundaries, other than corporate, verified 1998.
North American Datum of 1927 (NAD 27). Projection and 10 000-foot ticks: Louisiana coordinate system, south zone (Lambert conformal conic) 1000-meter Universal Transverse Mercator grid, zone 15
North American Datum of 1983 (NAD 83) is shown by dashed corner ticks. The values of the shift between NAD 27 and NAD 83 for 7.5-minute intersections are obtainable from National Geodetic Survey NADCON software



SCALE 1:24 000
CONTOUR INTERVAL 5 FEET
NATIONAL GEODETIC DATUM OF 1929
TO CONVERT FROM METERS TO FEET, MULTIPLY BY 3.2808
THIS MAP COMPLIES WITH NATIONAL MAP ACCURACY STANDARDS
FOR SALE BY U.S. GEOLOGICAL SURVEY, P.O. BOX 25286, DENVER, COLORADO 80225
AND LOUISIANA DEPARTMENT OF TRANSPORTATION AND DEVELOPMENT,
BATON ROUGE, LOUISIANA 70804



ROAD CLASSIFICATION

Primary highway, hard surface	Light-duty road, hard or improved surface
Secondary highway, hard surface	Unimproved road
Interstate Route	U. S. Route
	State Route

DENHAM SPRINGS, LA.
1995

NIMA 7844 IV NW-SERIES V885

